

EQUESTER

A monthly publication of the Wisconsin Dressage & Combined Training Association

PRESIDENT'S MESSAGE

Pam Doolittle

Dressage Quest: The International and Local Scene

Independence Day honors the birthday of the United States of America and the adoption of the Declaration of Independence on July 4, 1776. It's a day of picnics and patriotic parades, a night of concerts and fireworks, and a reason to fly the American flag. This year, WDCTA members, I'm excited to say USA's presence in the international dressage ring is something for all of us to be proud of! Let me explain:

* Selten HW with Elizabeth Ball and Wake-up with Emily Wagner have qualified for the International Young Horse Championships at Verden in August. The USEF Dressage Committee, chaired this term by Wisconsin's own Jayne Ayers, has put a lot of effort into planning the careful expansion of this program, which encourages the proper development of talented young horses toward international sport. Markel Insurance has been a long-time sponsor and supporter of this program, with Mary Phelps Hathaway doing a great job sharing the stories of both amateurs and professionals who have found success and satisfaction participating in this venue in her web-magazine, [Dressage Daily](#). Thank you to the sponsors! Congratulations to the USEF committee members, and best wishes to our "team" for safe passage to Europe and a rewarding experience in Verden!

* Like many of you, I had a chance to see Steffen Peters teach at the Midwest Horse Fair and was simply inspired by his kind manner and good horsemanship. Clearly he loves Raval, and gave Raval all the credit any chance he was able to in the sessions he shared with the Wisconsin

crowd. I remember he said, "I know many of you won't be here for the afternoon session since it is at the end of the day and you might have a long ride home. I just want you all to know that I will do my very best to make you proud as Raval and I represent our country in Kentucky." Steffen already "had me at hello," but saying that made me feel even more proud to be part of his "team" even if it is only as a fan. I will be in the stands in Kentucky cheering that pair on!

* As of this writing, WDCTA member, Mary Ruth Marks, is short-listed to represent the U.S. at the World Singles Driving Championships August 2010 in Pratoni, Italy, in the combined driving division. Marks reports she and her fabulous equine partner attended a mandatory training camp event held at The Laurels in Pennsylvania. She participated alongside seven other potential team members, all of whom have previously competed at the World Championships. She was in very good company. She will hear in the



Pam Doolittle on Coby

Photo by Mary Phelps

next week or so if she will be selected to the Team! Congratulations and good luck to you, Mary Ruth and Adeszko.

These are just a few pieces of the latest news about the "USA Dressage Quest 2010," as Phelps Hathaway has coined in her *Dressage Daily* columns. But the take-home message is that the USA is realizing a benefit from the hard work of volunteers, donation dollars and targeted planning that has been going on for years in the USEF Dressage Committee, as well as within the USDF. Hathaway Phelps featured an interview with USEF Dressage Technical Advisor, Anne Gribbons, on all that's going on to help develop talent for international competition. (Click [here](#) to view the article.)

It is important to realize that innovative programs are now available to ALL

Continued on page 2

President's Column...continued...

dressage enthusiasts. Programs such as the USDF L Education program help riders and trainers learn about the criteria under which we are judged. This program is also the first stepping stone to becoming a USEF-licensed judge. In addition, the USDF Instructor Certification Program provides structure and training for individuals interested in teaching our sport in a way that will preserve the classical principles and bring success in the ring. Most sessions of these programs are open for auditing, which is a great way to watch and learn without the pressure of pending assessment (such as a test). Last month we featured a proposal by S judge Janet Foy on a new program that would lead to an adult amateur year-end championship. I think this is a splendid idea and fully support this new opportunity for camaraderie and competition that is exclusive to "the rest of us." If you agree, please [email](#) your support to Ken Levy, Region 2 director.

Your board is continuing to work on ways to improve our club offerings and services. Soon you'll be invited to take a survey regarding your own interests, observations and what YOU would like to see WDCTA do as we plan for the future. Please take the time to let your voice be heard. After all, that's the American thing to do! Your responses will be gathered anonymously, and we plan on compiling a report to

share with members. Thanks in advance for lending your input on the future direction of WDCTA! Watch for the survey notice in a separate email message from me.

I want to close this message by extending a very special thank you to the hard working WDCTA volunteers that are developing targeted planning for our organization, seeking donation dollars and organizing events for our members across the state. WDCTA has remained a strong and viable organization, thanks to your commitment, tenacity and fundamental belief in our mission statement. Your work is so appreciated!

Next month, my president's message will highlight some exciting planning for WEG and the Annual Meeting event scheduled February 19, 2011.

Until then: Go Team USA!



Summer is officially in bloom.

Mailing List Policy: Email and Postal Service

Last month, we heard from members who received an unsolicited email from a non-WDCTA member about a non-WDCTA event. Please be assured, WDCTA does not give out or sell our membership's email addresses. This is in accordance with our long-time policy to protect members' privacy. Please continue to alert us to these situations, so we can contact the individual, business or organization.

WDCTA policy is as follows: WDCTA will consider requests for the purchase of a set of mailing labels for a one-time postal mailing at a cost of \$20 for members, \$40 for non-members. Anyone wishing to purchase a set of labels should contact the WDCTA president or WDCTA membership chair. These labels contain **ONLY** members' street or post office address and **NOT** an email address. It does not contain the names and addresses of members who have opted out of mailings outside of official WDCTA business.

WISCONSIN
DRESSAGE
& CT
ASSOCIATION, INC.

WDCTA Members are
Group Members
of the
United States Dressage
Federation

Editor

Caryn Vesperman
(608) 455-2208
newsletter@wdcta.org
W1619 King Road
Brooklyn, WI 53521

All advertisements, articles and photographs (with photo release) should be submitted electronically to the editor by the **15th of the month**, with payment for advertisements postmarked no later than the 15th. Ads and calendar of events submissions will appear in both the **eQuester** and on the website.

Advertising rates and requirements are under Forms on www.wdcta.org.



Charter

GROUP
MEMBER
ORGANIZATION

Dressage: Is It Really for Every Horse and Every Riding Style?

By Pamela Doolittle

The season has begun! Clinics, lessons, shows, trail rides and, of course, all the camaraderie that comes in the development of our dance partners, the horses, as well as the friendships we foster with our fellow human enthusiasts.

Participating in a show is an opportunity and joy that I hope each and every member can experience at least once this 2010 season. Yet I am aware some members feel excluded from participating in dressage shows at both the GMO and at the national levels. Western dressage enthusiasts and riders interested in competing gaited horses in dressage classes struggle to find opportunities in the dressage show ring.

One member wrote to share the many things she values in showing her gaited horse in dressage classes and expressed similar excitement and appreciation for all the things I mentioned above. She also shared, "I knew that I wouldn't have as many opportunities to show my gaited horse in dressage as trot horses do....I gain versatility and dressage points through my horses' breed association. The only downside was I was definitely bummed about not being able to gain year-end points (through WDCTA.)"

Should WDCTA offer a gaited horse year-end award? I recognize the debate, and I want to briefly lay open both sides. Reading the USEF rule book section DR101.1, we see beautifully stated the primary object of our sport:

"The object of Dressage is the harmonious development of the physique and ability of the horse. As a result it makes the horse calm, supple, loose and flexible but also confident, attentive and keen thus achieving perfect understanding with his rider."

It is easy to conclude from this statement that the classical principles are relevant to the development of any breed of horse, any style of riding, and indeed can



Kayla Kuenzi on her gaited horse

and should improve any overall performance since at the heart of this object is the positive development of the animal.

If you look to the purposes of the USDF dressage tests:

Training level – *"To confirm that the horse's muscles are supple and loose and that it moves freely forward in a clear and steady rhythm accepting contact with the bit."*

First level – *"To confirm that the horse, in addition to the requirements of Training level, has developed thrust (pushing power) and achieved a degree of balance and thoroughness."*

So again, a cursory look at these purposes reveals an inclusive tone that would suggest that any horse can compete in these classes. Why would a gaited horse that moves freely forward, balanced and connected over the back be excluded from or not do well participating in a dressage class? I asked Jennifer Keeler, USEF dressage division director, about what show opportunities exist for gaited horses in dressage. She pointed me again to the USEF rulebook DR118.4 where the tests allowed for recognized dressage competitions are defined:

*"In addition to Federation, FEI and USDF tests, Dressage competitions may use other tests but these must be included in the prize list sent to all exhibitors. Eventing Dressage tests may be offered if clearly indicated in the prize list. All dressage classes, whether or not the tests are issued by the Federation, FEI, or USDF, must be conducted under Federation or FEI (if applicable) rules, and are Federation recognized classes as specified in GR211. **Only dressage tests or classes requiring any of the three gaits defined by the FEI as walk, trot and canter may be ridden in Federation licensed Dressage competitions.**"*

A quick read in the USEF rulebook sections that specifically define the gaits (sections DR103 – DR105) adds further clarity. The trot, in particular, becomes an issue in judging a gaited horse competing in dressage classes. Gaited horses, such as Tennessee Walkers, Rocky Mountain Horses, Paso Finos and Missouri Fox Trotters, do not trot.

Says Lori Greenwood, a trainer of Tennessee Walking horses, "Trainers of true gaited horses would never consider trying to force their horses to trot."

Greenwood points out that these horses were bred to have a different timing to their limb coordination. (Click [here](#) for more information). As a result, scoring the gaits and movements using the guidelines provided in the USEF rulebook, from a judging standpoint, is problematic. However, from the perspective of trainers of gaited horses, it is poor horsemanship and to the detriment of the horse to force gaited horses to trot. Similar issues arise in evaluating other riding styles and breeds.

A related example is the judging of a lope versus a canter for western horses. Even judging the medium walk of these horses poses an issue when evaluating the walk biomechanics specific to these breeds.

Continued on next page

Gaited...continued...

A variety of horse associations have responded by developing tests specifically for gaited horses or tests that are more specific to their riding style and purposes. These tests and guidelines have been acknowledged by the USEF and USDF. Gaited horse tests through Third level, which can be found at this [website](#), ask specifically for horses in the class to perform the flat walk and running walks, rather than a trot. Keeler shares, "This modified test material may be used at NWA (National Walking Horse Association) or schooling shows ONLY – not USEF-licensed competitions offering dressage."

These classes will be offered at some of the WDCTA-approved schooling shows including the Kettle Moraine chapter event and schooling shows offered at Sorensen Equestrian Center, although as of this writing scores earned in these classes do not apply to year-end WDCTA awards.

Western dressage finds an official place in the USEF Morgan Horse Association [rulebook](#). In the Western Dressage

Division, horses navigate the tests with gaits defined as jog and lope, and riders/horses are directed to show in western tack and dress. Again, these tests are not allowed at USDF-licensed dressage competitions, but can be offered at schooling shows or Morgan Horse shows.

Alexandra Howard, an "S" licensed dressage judge, "L" Education and Instructor certification program faculty member, points out that gaited horses will never be able to perform the pinnacle movements of our sport: passage and piaffe. Howard also comments that gaited horses simply are not bred to have the correct posture required of horses competing in dressage. Howard certainly agrees that to a point, the training scale can help improve the rideability of any breed of horse, and any riding style. And while she certainly feels the modified tests are measures of obedience, she concludes they do not evaluate a path to FEI performance, and in the end, licensed dressage judges are not trained to evaluate these tests.

Some GMOs of the USDF now provide year-end awards for horses competing in the gaited horse and western dressage horse classes. The WDCTA awards committee is currently engaged in the debate on what our club can do to encourage and promote the primary object of our sport, as stated so eloquently in the USEF rulebook, in a way that is inclusive to all of our members. But in doing so, the awards committee also wants to be sure we maintain a true and classical standard of excellence, which the masters of our sport would appreciate and approve of.

We welcome your input on the matter and would like to know what you would be proud to support. Should WDCTA recognize schooling show classes that are specific to a breed or other disciplines of riding (example: Western dressage, gaited horse dressage)? Should WDCTA offer an award(s) specific to a breed or other disciplines of riding? Please send your comments and suggestions to me at president@wdcta.org.

WDCTA State Board

President

Pam Doolittle (608) 644-9423
president@wdcta.org

Vice President

Martha Flury (262) 723-2656
vp@wdcta.org

Secretary

Sue Genin (608) 882-6580
secretary@wdcta.org

Treasurer

Angela Genin (608) 516-2293
498 Cledell Street #3
Oregon, WI 53575
treasurer@wdcta.org

Historian

Anne Zaharias (906) 864-2790
historian@wdcta.org

Video Librarian

Donna Thomas (608) 835-8549
librarian@wdcta.org

Members-at-Large

Stephanie Severn (608) 835-1820
mal1@wdcta.org

Chet Thomas (608)835-8549
mal3@wdcta.org

Erin Whalen (262) 249-0157
mal2@wdcta.org

Membership Recorder

Mary Hanneman (608) 712-0975
N8160 Smith Road
Brooklyn, WI 53521
membership@wdcta.org

Dressage Recorder

Send forms to:
Mary Hanneman (608)
712-0975N8160 Smith Road
Brooklyn, WI 53521
dressagerecorder@wdcta.org

Eventing Recorder

dressagerecorder@wdcta.org

Kettle Moraine President

Martha Flury (262) 723-2656
km@wdcta.org

Southwest Chapter President

Donna Thomas (608) 835-8549
sw@wdcta.org

SW Chapter Representative

Pam Doolittle (608) 644-9423
president@wdcta.org

Upper Peninsula President

Karin Steffens (906) 346-6497
up@wdcta.org

Editor

Caryn Vesperman (608) 455-2208
W1619 King Road
Brooklyn, WI 53521
newsletter@wdcta.org

Website Coordinador

Stephanie Severn (608) 835-1820
website@wdcta.org

BITS 'N PIECES

News About Members, News to Help Members

Join in WDCTA member discussion on Facebook! Find out what's new in-between when the newsletter is distributed – such as last-minute clinic openings. Go to [Facebook](#) and search Wisconsin Dressage and Combined Training.

Condolences to Marti Coursin, Jonathan Ketzler and Jenni Poole. In the last few weeks, all three lost their horse partners, Brazil, Gabe and Bowie, respectively. Our horses have a way of taking over our hearts, and the loss we feel does break our hearts. You're in our thoughts.

WANTED: A horse to ride for the 2010 USEF Dressage Seat Medal Championships 13 years old and under at Lamplight Equestrian Center in Wayne, IL on July 25. Bronwyn Cordiak's horse was injured, so she has no horse to ride for the championships. If you can help, she says she will be "forever grateful and do (her) best to show off your horse and win" at the finals. Bronwyn adds, "Thank you for helping make my dream come true of riding and doing the best I can at the finals this July." If you can help, contact her mom, Kristin, at KSCORDIAK@CHARTER.NET or 469-360-6462.

Southwest Chapter News: The Southwest Chapter meetings and programs have paused for the summer and are scheduled to resume in September with an informative talk on the newly recommended worming program presented by Country View Veterinary Clinic.

In the meantime, SW chapter members report the following news:

From Donna Thomas and Mary Hanneman: Many thanks to our friends and members who have volunteered their time to insure an educational and fun-filled time with clinician Janet Foy. These clinics remain well attended by riders and auditors, thanks in part to all your help. We appreciate all you do.

From Pam Doolittle: If members are interested in auditing a clinic in-between your Fourth of July activities, come watch Maryal Barnett teach at Hidden Pond Farm (6486 Breunig Road, Mazomanie). More information about Maryal and the clinic can be found on the calendar pages of the website. The riding schedule is posted on the WDCTA website.

From Caryn Vesperman and Mary Hanneman: A very successful Sporthorse Evaluation Clinic with Gerd Zuther was held Saturday, June 19 at Green Meadows Farm, Belleville, WI. In addition to the good turn-out from pre-registrations, we had more people than we expected walk in the day of the event – and the clinic attracted new members to WDCTA. Watch for a more detailed report – including photos by Heather McManamy of ShortHorse Studio in next month's newsletter.

From Donna Thomas and Pam Doolittle: The final exam for our L Education program participants is scheduled to wrap up at the August 28 and 29th Lamplight Show. We'll need some volunteers to help with scribing, scoring and running test sheets. Southwest Chapter will pay expenses. For more information and to volunteer, please contact organizer Pam Doolittle at psdoolittle@yahoo.com.

Best wishes for success to all our L Education program participants pictured below:



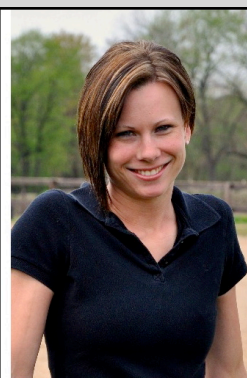
Paula Briney



Debbie Dalseg



Tricia Joaquin



Erin McElmurry



Elizabeth Mueller



Linda Sorensen



Michelle Sieracki



Stephanie Van de Ven



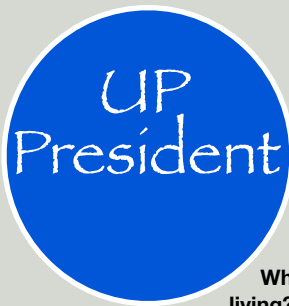
Caryn Vesperman



Amy Walker-Basak

Meet Your 2010 State Board Members

Get to know your state board members every month.



Karin Steffens

Where do you live?

I live in Michigan's Upper Peninsula.

What do you do for a living?

I'm a retired Economics professor.

Family?

I have two dogs, one horse and one man.

Other pets besides horses?

See above.

Favorite horse and why?

My favorite horse is the Hanoverian mare I just sold. Finni and I have a real connection. After spending 11 years together, I have come to know her so well that free-longeing her is a ton of fun because she listens so well to my commands. She's also a great lesson horse for the same reason, and because I can easily tell what the rider is doing based on her reactions.

What celebrity would you have dinner with (dead or alive)?

Steffen Peters would be fun to have dinner with. I love the way he rides and would love to pick his brain for training tips. I enjoyed watching him teach at the Midwest Horse Fair. And we could speak German and laugh about the fact that his first name is my last name.

What or who inspires you with your riding? I always get inspired when I watch upper level riders who truly dance with their horses.

If you take lessons, who do you ride or clinic with? I had Jesse Collins as my local trainer until recently. I also regularly clinic with Carol Schulz. In the recent past, I have ridden with Liz Hopps and George Williams. I also take lessons in Germany when I visit family there. I also rode in a clinic in June with Alex Gerding.

What was your wildest ride ever?

After I had imported my Hanoverian mare, Finni, I had quite a few wild rides with my friend, Cheri. We

would trail ride a lot, and I did not have much control over Finni.

Finni never much liked going over trotting poles and that aversion extended to downed trees in the woods. During one particular instance, Cheri and I came upon just such a scenario. Cheri's little Arabian mare easily stepped over the log, but Finni found it an impossibility. Cheri made her mare step aside as I tried to urge Finni to cross the log. After much energetic kicking, she suddenly decided to comply and flew across the obstacle as if it were a huge oxer. She headed straight for Cheri and her mare. The mare decided to get out of the way and stepped backward, right into a deep depression. The drop-off was so steep that she sat down on her haunches and had to thrust herself up. As the horse was coming up, Cheri was coming down.

After remounting, we continued on. We decided to kick it up a notch, when we came to a straight stretch in the woods, and cantered. Finni didn't like being behind the other horse and decided to pass on the right. Never a good idea in traffic, it turned out not to be a good idea for us either. As we were running, perhaps slightly out of control, past Cheri and her mare, Finni may have been experiencing something akin to horsey road rage, and seemed to be trying to nip the other horse in the butt. However, she missed the target and ended up biting Cheri in the leg.

You may be surprised to hear that Cheri and I are still very good friends after that ordeal.

If you were in a karaoke contest, you'd sing what song?

I'd be sitting in the back letting others take a crack at it.

Your favorite junk food?

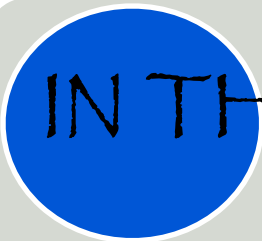
I love goodies and lattes, preferably together.

Most memorable experience with a horse or at a horse competition?

I wish I could say a super score in a very advanced test, but alas it would be showing at Dressage by the Bay in Traverse City a few years ago. After sharing with you how well I know Finni and how wonderful she is, you may be surprised to learn that after my friend, Tracee, and I had arrived and settled our horses in their stalls, Finni decided to go for a run as I was hanging the water bucket in her stall and left the door slightly ajar. The show grounds were huge because not only was there dressage but also a huge jumping competition going on at the same time. As Finni was flying around the corner of the stable area, I was running after her. A young woman on a scooter asked me if I wanted a ride and soon we were zooming along after the runaway horse. I was hanging on for dear life as Finni was heading for the jumping course. Not being much of a jumping fan (see story above) she skirted the jumping arena and headed for the hills. I jumped off the scooter, before I fell off and also because it didn't seem like a good idea to be chasing Finni with it. By the time I caught up with her at the edge of the show grounds, a nice guy had been able to catch her and I humbly walked back with my runaway.



Karin Steffens on Finni



IN THE WINNER'S CIRCLE

**WDCTA Members
are
Winners!**

Peggy Peregrine-Spears and her Norwegian Fjord, Dutch (pictured to the right), won the Large Pony Division at the Columbus Carriage Classic. (Must be those under saddle lessons with Janet Foy giving the two of them the edge! As well as a lot of work and special partnership.) Dutch is a multi-tasking pony and what a beautiful picture Peggy and Dutch make with carriage and period clothing.



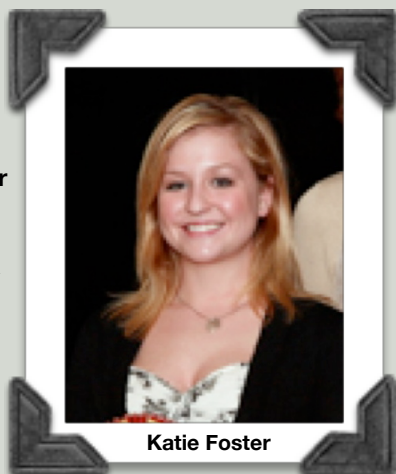
Peggy and Dutch (both photos)

Congratulations to **Mary Hanneman** and Pheobus (pictured to the left) not only for their debut ride at Prix St. George, but also for earning their Prix St. George silver medal scores in the first two rides at Silverwood Dressage Show, June 11-13. Trainer Jessica Jo Tate reports, "I am so proud of her! I don't know anyone who earned their scores in their first two debut rides!" Way to go!



Mary Hanneman

Katie Foster is now ranked sixth on the young rider list. Her scores at Silverwood Farm's dressage show June 11-13 boosted her up the list. WDCTA wishes her and Sacramento much luck at the Young Rider Championships in August!



Katie Foster

And final kudos this month....

Megan McIsaac earned her USDF Gold Medal on her Hanoverian gelding, Gold, at Sorensen Dressage Show at the end of June. A super accomplishment on a horse she has owned for less than a year. Outstanding!



Doug and Shannon Langer

Shannon Langer earned her USDF Bronze medal at Sorensen Dressage Show June 18-19. Shannon earned her score on Ranier by Rotspon, a Hanoverian gelding she and her husband, Doug, bred. Shannon did all the training. Huge congrats for this accomplishment!

WDCTA Members: Send in your or another WDCTA member's accomplishments to newsletter@wdcta.org

A listing in the Calendar of Events is a service provided to WDCTA members only.

WDCTA-Chapter Meetings

Sept. 14

SW Chapter Meeting - 6:30 p.m.
Update on Deworming Protocol with veterinarians
from Country View Vet Clinic
Location: Country View Veterinary Clinic, Oregon, WI
Contact: Donna Thomas (608) 835-8549 or
sw@wdcta.org

Nov. 13

SW Chapter Meeting - 1 p.m.
Planning Meeting for 2011
Contact: Donna Thomas (608) 835-8549 or
sw@wdcta.org

Dec. 11

SW Chapter Meeting - 1 p.m.
Death by Chocolate Holiday Party
Location: Becky Bebbler-Wells, Brooklyn, WI
Contact: Donna Thomas (608) 835-8549 or
sw@wdcta.org

WDCTA Clinics & Events

July 3-4

Maryl Barnett Clinic
Hidden Pond Farm, Mazomanie, WI (near Madison)
Contact: Pam Doolittle (608) 644-9423
psdoolittle@yahoo.com

Aug. 27-29

Janet Foy Clinic
Judd's Green Meadows Farm, Belleville, WI
Contact: Mary Hanneman (608) 712-0975 or
mahanneman@gmail.com

Sept. 10-12

Janet Foy Clinic
Judd's Green Meadows Farm, Belleville, WI
Contact: Mary Hanneman (608) 712-0975 or
mahanneman@gmail.com

Oct. 15-17

Clinic with Colleen Kelly on the Biomechanics of
Riding
Location: UP Equestrian Center, Marquette MI
Contact: Kathy Bull, 906 439-5842 or
klbull@tds.net

Oct. 15-17

Janet Foy Clinic
Judd's Green Meadows Farm, Belleville, WI
Contact: Mary Hanneman (608) 712-0975 or
mahanneman@gmail.com

Oct. 16

Behind-the-Scenes look at the World Equestrian
Games with Janet Foy - 6:30 p.m.
Quality Inn & Suites, 2969 Cahill Main, Madison (just
off Fish Hatchery Road)
Contact: Donna Thomas (608) 835-8549 or
sw@wdcta.org

Dec. 18-19

Maryl Barnett Clinic
Hidden Pond Farm, Mazomanie, WI (near Madison)
Contact: Pam Doolittle (608) 644-9423
psdoolittle@yahoo.com

WDCTA-Recognized Shows

July 10

Sorensen Park Schooling Show
Troy, WI
Judge: Liz Lamm, L
Contact: Reid Sorensen (262) 642-4111 or
sorensenparkllc@aol.com
WDCTA recognized classes Intro to Second Level only

July 31

Kettle Moraine Chapter Schooling Show
Sorensen Equestrian Park
Contact: Alice Antczak at
aantczak@centurytel.net
WDCTA recognized except for all gaited classes

July 31

Heartland Stables Dressage Schooling Show
Heartland Stables, 7510 Deer Rd, Custer, WI
Judge: Denise Jostes, L Graduate
Contact: Betty Foss, 715-592-4171
bettyfoss@heartlandstables.com
*WDCTA will recognize scores for Classes #1(Intro A) -
#15 (2nd Level % Ride) and Class #17 (Musical
Freestyle up to and including 2nd Level). Cannot
accept scores from Class #16 (3rd level and above %
ride) OR any musical freestyle 3rd Level and above
(Class #17).*

Aug. 1

Heartland Stables Dressage Schooling Show
Heartland Stables, 7510 Deer Rd, Custer, WI
Judge: Nicole Trapp, L Graduate
Contact: Betty Foss, 715-592-4171
bettyfoss@heartlandstables.com
*WDCTA will recognize scores for Classes #1(Intro A) -
#15 (2nd Level % Ride) and Class #17 (Musical
Freestyle up to and including 2nd Level). Cannot
accept scores from Class #16 (3rd level and above %
ride) OR any musical freestyle 3rd Level and above
(Class #17).*

Aug. 13-14

Sorensen Park Schooling Show
Troy, WI
Judge: Joan Lueck-Waak, L
Contact: Reid Sorensen (262) 642-4111 or
sorensenparkllc@aol.com
WDCTA recognized classes Intro to Second Level only

August 28

Dressage at WEC Schooling Show
Wisconsin Equestrian Center, De Pere, WI
Judge: Marie Johnson, R
Contact: Deborah Heier at 920-819-2891 or
deblmeyer@aol.com
WDCTA Recognized for all classes Intro - 4th Level

Sept. 11

Sorensen Park Schooling Show
Troy, WI
Judge: Tracey Dikkers, L
Contact: Reid Sorensen (262) 642-4111 or
sorensenparkllc@aol.com
WDCTA recognized classes Intro to Second L

Calendar continued on next page

COPYRIGHT © 2010 WDCTA



WISCONSIN
DRESSAGE
& ET
ASSOCIATION, INC.

Non-WDCTA Events

July 9-12

Clinic with Alex Gerding
Touchstone Farm, Brooklyn, WI
Contact: Caryn Vesperman (608) 455-2208 or touchstonefarm@gmail.com

Aug. 13-15

Adult Weekend Dressage Camp
Hearthstone Farm Inc., Dousman, WI
Contact: Jayne Ayers (262) 965-2066 or jayne@dressagehorse.com

Sept. 17-20

Clinic with Alex Gerding
Touchstone Farm, Brooklyn, WI
Contact: Caryn Vesperman (608) 455-2208 or touchstonefarm@gmail.com

Oct. 22-24

Adult Weekend Dressage Camp
Hearthstone Farm Inc., Dousman, WI
Contact: Jayne Ayers (262) 965-2066 or jayne@dressagehorse.com

Oct. 22-25

Clinic with Alex Gerding
Touchstone Farm, Brooklyn, WI
Contact: Caryn Vesperman (608) 455-2208 or touchstonefarm@gmail.com

Nov. 5-7

Clinic with Gerd Zuther
Touchstone Farm, Brooklyn, WI
Contact: Caryn Vesperman (608) 455-2208 or touchstonefarm@gmail.com

Nov. 19-22

Clinic with Alex Gerding
Touchstone Farm, Brooklyn, WI
Contact: Caryn Vesperman, (608) 455-2208 touchstonefarm@gmail.com

Send copy for calendar of events to newsletter@wdcta.org. Listings are free to members and advertisers.

2011 USDF Membership Dues & Horse Registration Fee Increase

The 2011 USDF Membership Dues and Fees Are As Follows:

Participating Membership:

- 1-Year Participating - \$75
Youth Participating - \$60
5-Year Participating - \$300
Life Participating - \$1500
Business Membership - \$200

Group Membership:

- Individual Member or Primary Family Member - \$20
Supporting Family Member - \$10

Non-Member:

A \$25 fee per show will take effect with the start of the 2011 competition year, October 1, 2010

Horse Registration:

- Horse Identification Number - \$25
Lifetime Horse Registration - \$95



859-971-2277 ♦ WWW.USDF.ORG

Classifieds

Cimarron Horse Blanket Laundry and Repair. \$10 blanket wash, \$9 for two or more washes. Repairs start at \$1. Rewaterproofing \$10. Antimicrobial blanket wash formulated for horses. Can also wash and repair saddle pads and leg wraps. Pick up and delivery available. slmadt@yahoo.com or 920-286-0127.

(12/10)

Magill, handsome 15.2h grey four-year-old gelding by Makuba, out of a sweet Welsh Cob cross mare. In training with professional dressage rider since December 2009. Lovely, balanced mover with a friendly, curious personality. Shows jumping talent also. Price on request. (608) 835-5081 or e-mail dolycoed@hotmail.com

(12/10)

Send copy for classified ads to newsletter@wdcta.org. Make check payable to WDCTA and send to: W1619 King Road, Brooklyn, WI 53521. Ad will run when payment is received. 50 words: 1 x rate: \$5 for non-members or \$4.50 for members.

For over 15 years we've been breeding exceptional warmblood sporthorses in Wisconsin. Stop by for a visit and meet our horses and pets, and maybe find the horse of your dreams!

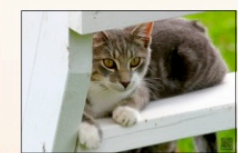


Photo by ShorthorseStudios.com

Photos by ShorthorseStudios.com



Stephanie Severn, Owner
McFarland Wisconsin
608.213.8925
www.hopefulfarm.com

MarketPlace

COUNTRY VIEW VETERINARY SERVICE



Judy Batker, DVM
Larry Mahr, DVM
Stephanie Hirsbrunner, DVM

Emily Leuthner, DVM, DACVIM
Christine Olson, DVM
Andrea Lanphear, DVM, CVA

1350 South Fish Hatchery Rd • P.O. Box 27 • Oregon, WI 53575

Tel 608-835-0551 Fax 608-835-0552

www.countryviewvets.com

customerservice@countryviewvets.com

Heritage Acres Farm

Horse Training, Riding Lessons,
Boarding

Specializing in
Dressage, Huntseat, and Western

920-585-1341

www.heritageacresfarm.net



Breeders helping
breeders since 1999

Midwest Breeders Group

4595 Mahoney Rd. McFarland, WI 53558

midwestbreedersgroup@gmail.com

www.breedersgroup.com

608-213-8925



Send copy for classified ads to
newsletter@wdcta.org.

Make check payable to WDCTA
and send to:
W1619 King Road, Brooklyn, WI 53521.

Ad will run when payment is received.

50 words:

1 x rate: \$5 for non-members or \$4.50 for members



ANDREA SCHTEN

DRESSAGE INSTRUCTION & TRAINING

BARREAU FARM LLC.

W349S10131 BITTERSWEET CT, EAGLE, WI 53119,

MAIL: PO Box 316, MUKWONAGO, WI 53149-0316

CELL: (262)470-4557 • ASCHTEN@HOTMAIL.COM

WEB: WWW.ANDREASCHTEN.COM



Megan McIsaac
President

LINDINHOF EQUINE SPORTS
Zentrum

DRESSAGE TRAINING • SALES • LESSONS
All Levels - F.E.I.

4246 Schneider Dr. • Oregon, WI 53575

(608) 445-8531

lindinhof1@aol.com

www.lindinhof.com

www.nodoubtmcisaac.com

Business Members

[Country View Veterinary Service](#)

[Sandra Granquist](#)
Cedar Creek Farm

[Megan McIsaac](#)
Lindinhof Equine Sports Zentrum

[Andrea Schten](#)
Hickory Grove Farm

[Jennifer Schultz](#)
Heritage Acres Farm

Stonegate Equestrian Center LLC

Sunflower Farm LLC

Stable ~ Instructor ~ Breeder Listing

Email links are
live if viewed
electronically.

Listings provided as a service and are not an endorsement of any member or facility listed. Must be a WDCTA member to be included.

Stable Listings

DUNDEE TRAINING STABLE

Tracy Dikkers
N6482 Silver Road
Monticello WI 53570
608-938-2410
dundee@tds.net
Small private facility, indoor and outdoor. Lessons available.

EAU PLEINE SPORT HORSE

Deanna Landwehr
EP4484 Hwy. E
Stratford, WI 54484
715-687-4984
dlandwehr@solarus.biz
68 x 160 indoor, 20 x 60 outdoor dressage ring w/ rubber/sand footing, 20 x 50 outdoor fenced arena w/ sand footing, heated barn, wash stall w/ hot water, dressage training and instruction available.

EQUESTRIAN ENDEAVORS

Erinn Bieber
N4845 Highline Road
Bonduel, WI 54107
715-460-0532
erchelstrom@gmail.com
Indoor with mirrors, standard outdoor dressage ring, large pasture turnout (individual or small group), wash stall w/ hot and cold water, training, lessons and trailering to show available.

HEARTHSTONE FARM INC

Jayne Ayers
W381 S5225 Hwy. ZC
Dousman WI 53118
262-965-2066
jayne@dressagehorse.com
Trails. Heated indoor arena. Large sand and limestone outdoor w/ full-size dressage court. Cavaletti, jumps. 2 barns w/ 14 matted stalls, wash stall, heated tack room. Daily private, semi-private turnout. Pasture board available. Lunge lessons, dressage coaching, cavaletti work, quadrille, schoolmasters, full service.

HERITAGE ACRES FARM

Jennifer Schultz
N671 34th Drive
Berlin WI 54923
920-585-1341
JPOTRATZ34@YAHOO.COM
13 stall barn with private turnout. Indoor, outdoor arena, wash stall, 2 large pastures, 3 private pastures, 60 acres of trails. Lessons, training.

HICKORY GROVE FARM

Andrea Schten
W336 S8510 County Road E
Mukwonago, WI 53149
262-470-4557
aschten@hotmail.com
Heated barn, hot-cold wash stall. 10 x 12 matted stalls, 70 x 120 indoor, 100 x 200 outdoor – both with excellent footing. Individual and group turn out. Training and lessons available with Andrea Schten. 100 acres of trails.

LINDINHOFF EQUINE SPORTS ZENTRUM

Megan McIsaac
4246 Schneider Drive
Oregon, WI 53575
608-445-8531
Lindinhof1@aol.com
Indoor and outdoor. Individual and group turnout. Wash stall. Numerous trails. Solarium. Lessons and training available.

PEN BRYN FARM, LLC

Valerie Ahl
4321 State Road 138
Oregon, WI 53575
608-698-7924
val@sporthorseprospects.com
Private breeding/training facility. 76' x 126' indoor arena w/ mirrors, a 100' x 200' outdoor arena w/ dressage arena, trails, jumps, cross-country obstacles. Stalls w/ mats, indoor grooming stalls, outdoor wash stall. Daily turn-out in small groups to pastures w/ shelters and automatic waterers, individualized care.

SENTINEL FARM

Anne Zaharias
W4769 Million Dollar Road
Menominee, MI 49858
906-864-2790
sentinelarm@mari.net
12 x 12 matted stalls, heated barns, viewing area, hot water wash stall, daily turnout – private paddock or pasture. D level cross country field, 70 x 150 indoor, 100 x 200 outdoor. Lessons and training.

SUNFLOWER FARM

19000 - 128th Street
Bristol, WI 53104
262-857-8555
reinsman@aol.com
7 heated barns, 3 indoor heated arenas, 3 outdoor dressage rings, 24-hr. security, 170 acres.

WALKABOUT FARM

Alice Antczak
N7258 County Road ES
Elkhorn, WI 53121
262-642-4178
aantczak@centurytel.net
10 x 10' matted stalls, 60 x 120' mirrored indoor arena, full-size outdoor arena, seasonal pasture, manicured trails, retirement boarding, training available.

WHISPERING WILLOW FARM

Kathleen Findley
21134 W. 7 Mile Road
Franksville, WI 53126
262-895-6978
whisperingwillowfarm@yahoo.com
12 x 12 matted stalls, large aisles, secured heated tack room, heated hot/cold wash stall, 70 x 120 indoor w/ rubber footing, heated viewing lounge, 100 x 200 outdoor w/ sand footing, pastures, individual packages w/ ala carte lessons, training, clinics.

WINDFEATHER TRAINING CTR

Gail Rentmeester
5254 H.E. Townline Road
Green Bay, WI 54311
920-536-0447
riding.master@yahoo.com
Located 7 miles from east Green Bay. Top-quality stable at affordable price. Buckeye and Purina feeds available. Professional instructor and barn

manager on site. New for 2009: Trails around the facility.

Instructor Listings

JAYNE AYERS

Hearthstone Farm Inc
W381 S5225 Hwy. ZC
Dousman, WI 53118
262-965-2066
jayne@dressagehorse.com
Trained and shown many horses thru GP. Trained as part of US Equestrian Team. FEI "I", USEF "S" judge. Degree in Education. Member of USDF "L" faculty. Chosen by FEI to give Dressage Development clinics. Enjoy teaching all levels. Schoolmasters available.

ERINN BIBER

Equestrian Endeavors
N4845 Highline Road
Bonduel, WI 54107
715-460-0532
erchelstrom@gmail.com
Shown and trained through I-1. Currently train with Janet Foy. School horses available. Will travel and available for clinics.

TRACEY DIKKERS

Dundee Training Stable
N6482 Silver Road
Monticello, WI 53570
608-938-2410
dundee@tds.net
USDF Bronze and Silver Medalist. "L" graduate w/ distinction. Trained and shown through PSG. Will travel in Madison area.

KATHY FINDLEY

Whispering Willow Farm
21134 W. 7 Mile Road
Franksville, WI 53126
262-895-6978
whisperingwillowfarm@yahoo.com
CHA Certified Master Instructor. Certified in Equine Management CHA Region 3 Director. AQHA professional horseman. Certified clinician for the balanced rider and horse. Multi-carded breed judge.

Continued on next page

INSTRUCTOR LISTING...continued

TRACY KISSEL
Serenity Farm
2803 Old Park Road
Sheboygan, WI 53081
920-918-3685
920-457-5353

USDF Bronze, Silver medalist. 30+ years teaching experience from Training through PSG. Shown through 4th. Continue training w/ many European trainers. Year-end awards with USDF, WDCTA, AQHA. Associates Degree in Equine Management. Travel for clinics. References available.

DEANNA LANDWEHR
Eau Pleine Sport Horse
EP4484 Hwy. E
Stratford, WI 54484
715-687-4984
dlandwehr@solarus.biz

Trained and shown thru GP. USDF Gold medalist. Also experienced in western events. Will travel for clinics.

MEGAN MC ISAAC
Lindinhof Equine Sports Zentrum
4246 Schneider Drive
Oregon, WI 53575
608-445-8531
Lindinhof1@aol.com

FEI trainer. Enrolled in USDF "L" and Instructor's program. Competed successfully at Dressage at Devon in 2007, placing 11th in the I-1, qualifying for Freestyle. Will travel to give clinics. 10 years teaching experience, beginners thru advanced. School horse available.

GAIL RENTMEESTER
Windfeather Training Center
5254 H.E. Townline Road
Green Bay, WI 54311
920-536-0447
riding.master@yahoo.com

20+ years teaching and training. Trained several students at state top-tens, reserves and grand championships. HSA Certified and excel in starting the young rider. 4-H Horse Project Leader and Judging Coach. Participated and audited clinics with natural horsemanship, HUS, western and dressage.

ANDREA SCHTEN
Hickory Grove Farm
W336 S8510 County Road E
Mukwonago WI 53149
262-470-4557
aschten@hotmail.com

USDF Bronze and Silver Medalist. Regional champion-ships from Training level thru I-1 on self-trained horses. Accepting approved horses in training.

Specialize in assisting amateurs move up the levels.

JENNIFER SCHULTZ
Heritage Acres Farm
N671 34th Drive
Berlin WI 54923
920-585-1341
JPOTRATZ34@YAHOO.COM

Traveling the last 8 years to clinics, seminars and private lessons across the Midwest. Ridden to Fourth Level. 10 years teaching experience to Fourth Level. School horses available. Will travel. References upon request.

NICOLE TRAPP
1207 White Sands Court
West Bend, WI 53090
920-960-6930
trappnl@hotmail.com

Competed thru 2nd Level, trained thru Fourth. Evented thru Training. 15+ years teaching experience. Audited USDF Instructor Certification program. Completed USDF "L" Judge's program w/ distinction. USDF regional/HOY breed awards. Lesson and training programs to fit any budget. Will travel. School horses. Will start young horses.

KATE VAN SICKLEN
Silver Spring Farm
3031 Timber Lane
Verona, WI 53593
608-845-6630
katevsh@tds.net

British Horse Society Instructor. USDF "L" Program graduate with distinction. USDF Associate Instructor. 30+ years teaching experience. Will teach thru 4th Level. Will travel for lessons. Based out of Green Meadows Farm, Belleville. USDF Silver Medalist. Shown thru Prix St. George. References available upon request.

JOANN WILLIAMS
Cambridge Farm
W3580 Scotch Bush Rd
Elkhorn, WI 53121
414-378-2231
jwcambbridge18@yahoo.com

Offering classical dressage for every horse and rider. USDF Gold medallist on self-trained horse. Many students have Silver and Bronze. Multiple USDF regional winner. Will travel for lessons and clinics.

ANNE ZAHARIAS
Sentinel Farm
W4769 Million Dollar Rd
Menominee, MI 49858
906-864-2790
sentinelfarm@mari.net

USDF Bronze Medallist. Completed USDF Instructor Certification courses. USDF and Breed Championship titles at Regional, National and World levels.

Experience with a variety of breeds. Will travel off site.

Breeder Listings

VALERIE AHL
Pen Bryn Farm, LLC
4321 State Road 138
Oregon, WI 53575
608-698-7924
val@sporthorseprospects.com
Established in 2003 to breed world-class athletes w/ exceptional talent for dressage, jumping and eventing. Hanoverian, Westfalen and Rheinland Pfalz Saar mares (bloodlines of Florestan I, Landadell, Winterprinz, Weltmeyer, Donnerhall, Walk on Top, Tanzenlicht) crossed w/ top performance sires.

JAYNE AYERS
Hearthstone Farm Inc.
W381 S5225 Hwy. ZC
Dousman, WI 53118
262-965-2066
jayne@dressaghorse.com
Standing Galaxy, Westfalen by Guarantor. Live cover \$900 with return. Sire of many top quality horses actively competing successfully in dressage and jumping.

TRACEY DIKKERS
Dundee Training Stable
N6482 Silver Road
Monticello, WI 53570
(608) 938-2410
dundee@tds.net
Warmblood and warmblood crosses, young stock usually available.

KATHY FINDLEY
Whispering Willow Farm
21134 W. 7 Mile Road
Franksville, WI 53126
(262) 895-6978
whisperingwillowfarm@yahoo.com
Breeder of quality approved Belgian Warmbloods for use in dressage and hunter/jumpers. Horses for sale.

Sandra Granguist
Cedar Creek Farm
N16460 Townshipline Road
Wilson, MI 49896
(906) 497-4434
cedarcreekfriesians@earthlink.com
Standing Ate van der M, Friesian stallion – multi-world and multi-national champion in dressage, halter and hunt seat. Standing to all breeds of quality mares. Friesian cross foals, yearlings and 2-year-olds for sale.

SHANNON E. LANGER
Maple Run Farm LLC
W3465 Market Road
Helenville, WI 53137
(920) 674-6344
maplerunfarm@yahoo.com
Breeding Hanoverians of exceptional quality. Bloodlines include Ampere, Bordeaux, DeNiro, Diamond Hit, Rohdiamont, Royal Prince, Sir Donnerhall, Sinatra Song, Fidertanz, Pablo, Winterprinz and Weltmeyer.

STEPHANIE SEVERN
Hopeful Farm Sport Horses
4595 Mahoney Road
McFarland, WI 53558
(608) 213-8925
hopefulfarm@gmail.com
Breeders of quality German Oldenburg, Westfalen, RPSI and Dutch Warmblood sport horses since 1993. Annual RPSI Mare and Foal inspections. Young horses available.

Questions or contributions to the WDCTA website? Please go through our website coordinator, Stephanie Severn (not Erin Whalen). Thank you!

Grass Roots Dressage Show

July 31, 2010, 8:00 a.m.

Sorensen Equestrian Park (www.sorensenpark.com)
1700 St. Peters Road, East Troy, WI 53120 • (262)642-4111

Judge: Jenny Schwandt

Ribbons and High Point Award

Entries Close July 15, 2010 or When 45-Ride Slots Fill

Enter Early, Don't be Disappointed—45-Ride Limit—First Come, First Served

Late Entries Accepted Only If Ride Times Available

Negative Coggins Test Required (Photocopy with Entry) Bring Original Copy Day of Show

USEF Rules, Not Sanctioned by USDF or USEF (Scores Do Not Count For Year End Awards)

Scores Eligible for WDCTA and the Sorensen Schooling Show Program

Show Attire/Dressage Tack Not Required • **ASTM Helmets Required**

Food Available on Grounds

Please include a separate check for \$20.00 (to WDCTA) which will be returned after you strip clean your stall.

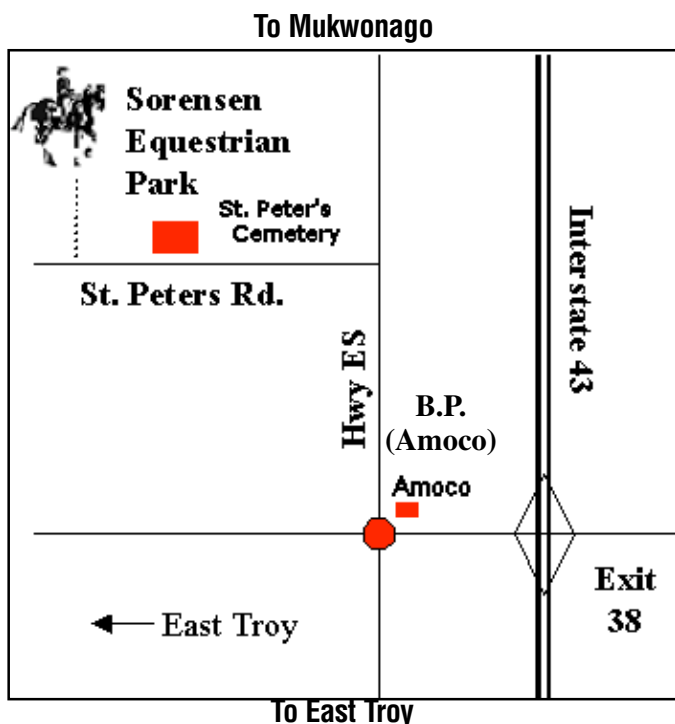
Fees refunded—less \$40.00 stall rent—only with veterinarian's/doctor's certificate

Fees:

Stall (required—includes one bag of bedding)	\$40.00
Additional bedding (optional)	7.00
Horses may arrive Friday, July 30, 2010 after 1:00 p.m.	
Tack stalls	\$35.00
Office fee (one time show fee)	\$10.00

Classes:

1	Intro test 1 – open	\$20.00
1G	Intro test 1 – Gaited Horses	\$20.00
2	Intro test 2 – open	\$20.00
2G	Intro test 2 – Gaited Horses	\$20.00
3	Dressage suitability (w/t) – open (min. 3 entries)	\$20.00
4	Walk/trot dressage equitation – open	\$20.00
5	Training level test 1 – open	\$20.00
6	Training level test 1 – maiden	\$20.00
6G	Training level test 1 – Gaited Horses	\$20.00
7	Training level test 2 – open	\$20.00
8	Training level test 3 – open	\$20.00
9	Training level test 4 – open	\$20.00
10	First level test 1 – open	\$20.00
11	First level test 1 – maiden	\$20.00
12	First level test 2 – open	\$20.00
13	First level test 3 – open	\$20.00
14	First level test 4 – open	\$20.00
15	Second level or above % ride – open	\$20.00
16	Amateur handler (sporthorse-in-hand)	\$20.00



Call Alice Antczak July 26 for Ride Times

Alice Antczak, N7258 County ES, Elkhorn, WI 53121 (262) 642-4178 • Email: aantczak@centurytel.net

Grass Roots Dressage Show

July 31, 2010

NAME OF HORSE (Please Print)	BREED	HEIGHT	COLOR	SEX	AGE

CLASS NO.	CLASS DESCRIPTIONS – BE SURE TO SPECIFY LEVEL WHERE APPLICABLE	ENTRY FEES												
<p style="text-align: center;">Please type or print! Use separate form for each horse.</p> <p><i>You must enclose:</i></p> <ul style="list-style-type: none"> • Check/money order, payable to: WDCTA Kettle Moraine Chapter for all fees. • Separate check for \$20., payable to: WDCTA for stall cleaning. Returned when stall is stripped. • A photocopy of current coggins test for each horse. <i>Bring original to show.</i> <p style="text-align: center;">***ALL ENTRIES MUST INCLUDE***</p> <p style="text-align: center;">ALL FEES AND SIGNED WAIVER</p> <p><i>Fees refunded—less \$40.00 stall rent—only with veterinarian's/doctor's certificate.</i></p>		<table style="width: 100%; border-collapse: collapse;"> <tr><td style="padding: 2px;">Entries</td><td style="text-align: right; padding: 2px;">\$</td></tr> <tr><td style="padding: 2px;">Stall (required) <small>includes 1 bag bedding</small></td><td style="text-align: right; padding: 2px;">\$ 40.00</td></tr> <tr><td style="padding: 2px;">Additional Bedding <small>(optional)</small></td><td style="text-align: right; padding: 2px;">\$ 7.00</td></tr> <tr><td style="padding: 2px;">Tack Stall (\$35.00)</td><td style="text-align: right; padding: 2px;">\$</td></tr> <tr><td style="padding: 2px;">Office Fee</td><td style="text-align: right; padding: 2px;">\$ 10.00</td></tr> <tr><td style="padding: 2px;">TOTAL</td><td style="text-align: right; padding: 2px;">\$</td></tr> </table>	Entries	\$	Stall (required) <small>includes 1 bag bedding</small>	\$ 40.00	Additional Bedding <small>(optional)</small>	\$ 7.00	Tack Stall (\$35.00)	\$	Office Fee	\$ 10.00	TOTAL	\$
Entries	\$													
Stall (required) <small>includes 1 bag bedding</small>	\$ 40.00													
Additional Bedding <small>(optional)</small>	\$ 7.00													
Tack Stall (\$35.00)	\$													
Office Fee	\$ 10.00													
TOTAL	\$													

Rider/Handler _____

Street _____

City _____ State _____ ZIP _____

Daytime Telephone _____ Home Telephone _____

Horse Owner _____

Street _____

City _____ State _____ ZIP _____

Daytime Telephone _____ Home Telephone _____

Registration Signature _____

Please stable me with _____

Please mail entry form/fees to:

Alice Antczak
N7258 County ES
Elkhorn, Wisconsin 53121

Questions:
(262) 642-4178

Entries Close July 15, 2008
or When 45-Rides Fill
First Come/First Served

**Wisconsin Dressage & Combined Training Association
Waiver, Release and Hold Harmless Agreement**

Please read the following statements and indicate your understanding and agreement to them by signing below:

I, the undersigned, understand and believe that the use, handling and riding of horses involves a risk of physical injury to any individual undertaking such activities. I further know that any horse, irrespective of its training, usual past behavior and characteristics, may act or react unpredictably at any time. With full awareness of the foregoing, I am knowingly participating in a horse show judged by Jenny Schwandt and sponsored by the Wisconsin Dressage and Combined Training Association (WDCTA) and I voluntarily engage in this activity. The possibility of injury is accepted as a risk inherent in work on and around horses.

I, the undersigned, understand that horseback riding is a rigorous activity, both physically and mentally demanding. I hereby represent that my horse and I have the requisite level of physical fitness and mental alertness to enable us to participate in the horse show for which this waiver is being obtained. Both my horse and I are in good health and free from injury, illness or other defects, which may impair our ability to engage in this activity.

I, the undersigned, also understand that riding in a show by its nature requires that the judge issue direction in the form of "commands", and I understand that, while due deference must be given to such commands, I must and will use my own judgment whenever the situation demands it. I understand that all activities engaged in as part of the instruction are entirely voluntary and that I may elect not to comply with any suggested act. The Judge is entitled to my attentiveness and good faith efforts to respond to his/her directives, but he/she neither is entitled to nor requests absolute obedience and it is expected that I will at all times be alert and thinking while on horseback.

I, the undersigned, understand that approved riding helmets are required when mounted for all riders.

I, the undersigned, expressly and voluntarily assume all risks attendant to horseback riding and related activities, including but not limited to those discussed in the foregoing paragraphs. I do hereby fully and forever release, discharge, and hold harmless Jenny Schwandt, WDCTA, its officers and members, Sorensen Equestrian Park, as well as all other participants of the horse show, and the assigns of same, from any and all claims which I, the undersigned, or my assigns, may assert as a result of physical injury to a horse or rider, or loss of property, that incurred while a participant using, handling, or riding a horse while a participant in the WDCTA Kettle Moraine Chapter Grass Roots Dressage Show. My signature on this form constitutes expression of my understanding and agreement to all that is stated above and my total and unconditional release of Jenny Schwandt, WDCTA, its officers and members, and other show participants.

In accordance with the Wisconsin Law relating to the limitation of civil liability regarding equine activities:

"NOTICE: A person who is engaged for compensation in the rental of equines or equine equipment or tack or in the instruction of a person in the riding or driving of an equine or in being a passenger upon an equine is not liable for the injury or death of a person involved in equine activities resulting from the inherent risks of equine activities, as defined in section 895.481(1)(e) of the Wisconsin Statutes."

Dated: _____ Signature of participant: _____

I, the undersigned, am one of the parents of the above-named minor participant (and/or the duly appointed legal guardian of such minor), and I have full authority to sign this waiver for and on behalf of the minor. My signature on this form constitutes expression of my understanding and consent to the total and unconditional waiver set out above.

Dated: _____
Signature of parent or legal guardian on behalf of minor participant

PLEASE PRINT:

Name of Participant _____ Telephone _____

Address _____ City/State/ZIP _____

Equester June 2010

WDCTA-SW Chapter 2010 Dressage Clinics with Janet Foy

at Judd's Green Meadows Farm, 6412 County A, Belleville, WI 53508

- August 27-29** - opening date July 16 **October 15-17** - opening date Sept 1
 September 10-12 - opening date July 30

Separate application required for each clinic!

Janet Foy is an "I" rated FEI judge, USEF "S" and Sport Horse Breeding judge. She has judged US and international FEI shows, including the NAYR Champs, Dressage at Devon, & USA World Cup League. She is a USDF L Faculty member and instructs Federation Judges. She is a USDF bronze, silver and gold medalist, having ridden horses to Horse of the Year Awards from Training to Grand Prix. Janet was a member of the USDF test writing committee, making her uniquely qualified to provide her students with insights to accurate test riding.

All rider applications must be **postmarked** on the "opening date" (see above). Riders will be selected on a first come basis with preference given to WDCTA-SW chapter members, followed by WDCTA members from other chapters. Refunds will be considered at organizer's discretion with receipt of veterinarian and/or doctor's certificate. Alternates will have first chance at open slots. *Tentative Schedule: Friday - Sunday 8:00 AM- 4:30PM.*

Rider Name: _____ Address: _____

City: _____ State: _____ Zip: _____ Phone _____

Email: _____

Horse's Name: _____ Breed: _____

Age: _____ Schooling Level _____ Showing Level _____

RIDER FEES: For 3 rides

- SW Chapter Member: \$350 WDCTA Member/other chapters: \$375 Non-WDCTA: \$400
 \$25 TRAILER IN FEE (everyone pays except Judd boarders)

Ride time preference? AM PM (will try to accommodate) _____

Will you need a stall? Overnight ** For day** Just in and out

**VERY limited availability & additional cost – organizer will contact you with options

Negative Coggins required with application (if you board at Judd's, don't send.) All shots must be current.

AUDITOR FEES:

WDCTA-SW Chapter members – NO CHARGE!!

WDCTA member	1 day @ \$15 _____	2 days @ \$25 _____	3 days @ \$30 _____
Non-WDCTA member	1day @ \$20 _____	2 days @ \$30 _____	3 days @ \$35 _____

Attending: Friday Saturday Sunday

Includes coffee/water/soda and snacks. Bring your own lunch and chair!

Rider / Auditor Fee	\$ _____
Trailer in Fee	\$ _____
TOTAL ENCLOSED	\$ _____

Make checks payable to: WDCTA Southwest Chapter

Mail to organizer with check & 2010 Coggins:

Mary Hanneman, N8160 Smith Rd, Brooklyn, WI 53521
608-712-0975 or mahanneman@gmail.com

Questions?

**WDCTA-SW Chapter 2010 Dressage Clinics with Maryal Barnett
at Hidden Pond Farm, 6486 Breunig Road, Mazomanie WI 53560**

 July 2-4 - PLENTY OF ROOM FOR AUDITORS! (RIDER SLOTS FILLED FOR JULY.)

 December 17-19 - opening date November 26

Separate application required for each clinic!

Maryal is an accomplished rider and judge, and has competed at the Grand Prix level as well as serving as an [Fédération Equestre Internationale](#) (FEI) "C" Dressage Judge, and USEF "S" Dressage Judge. She is a USDF L Faculty member and certified instructor examiner, and has held numerous board positions both with the USDF and USEF. Highly regarded for her ability to connect with and teach students at all levels, her philosophy and methods and always positive and encouraging.

All rider applications must be postmarked on or after the "opening date" (see above). Riders will be selected on a first come basis with preference given to WDCTA-SW chapter members, followed by WDCTA members from other chapters. Refunds will be considered at organizer's discretion with receipt of veterinarian and/or doctor's certificate. Alternates will have first chance at open slots. Tentative Schedule: Friday 3:00 PM – 7:00 PM, Saturday 8:00 AM – 4:30 PM, Sunday 8:00 AM– 1:30PM.

Rider Name: _____ Address: _____

City: _____ State: _____ Zip: _____ Phone _____

Email: _____

Horse's Name: _____ Breed: _____

Age: _____ Schooling Level _____ Showing Level _____

RIDER FEES: For 2 rides (choose either Friday/Saturday or Saturday/Sunday lessons)

 SW Chapter Member: \$270 WDCTA Member/other chapters: \$290 Non-WDCTA: \$315

Ride time preference? AM PM (will try to accommodate) _____

Lesson day preference? Fri/Sat Sat/Sun

Will you need a stall? Overnight (add \$25)** For day (add \$10)** Just in and out (no fee)

**Organizer will contact you with details regarding leaving your horse.

Negative Coggins required with application (if you board at Hidden Pond Farm, don't send.) All shots must be current.

AUDITOR FEES:

WDCTA-SW Chapter members – NO CHARGE!!

WDCTA member 1 day @ \$15 _____ 2 days @ \$25 _____ 3 days @ \$30 _____

Non-WDCTA member 1day @ \$20 _____ 2 days @ \$30 _____ 3 days @ \$35 _____

Attending: Friday Saturday Sunday

Includes coffee/water/soda and snacks. Bring your own lunch and chair!

Rider / Auditor Fee \$ _____

Stabling Fee \$ _____

TOTAL ENCLOSED \$ _____

Make checks payable to: WDCTA Southwest Chapter

Mail to organizer with check & 2010 Coggins:

Pamela Doolittle, 6486 Breunig Road, Mazomanie WI, 53560
608-712-1400 or psdoolittle@yahoo.com

Questions?



Dressage at Wisconsin Equestrian Center Dressage Schooling Show

August 28, 2010 • De Pere, WI

Judge: Marie Johnson (WI) • USEF "R" Dressage Judge

A second judge will be added, if entries warrant it.

Recognized by the NEW Dressage Association and the Wisconsin Dressage & CT Association.
This show follows rules set forth by the U.S. Equestrian Federation.

PLEASE PRINT:

Horse Name _____
 Breed _____
 Color _____ Sex _____
 Height _____ Age _____
 Rider Name _____
 Street _____
 City _____
 State _____ Zip _____
 Home Phone _____
 Daytime Phone _____
 Email _____
 Owner Name _____

WEC Rules:

- No more than (3) rides per horse/rider combination.
- Only (1) horse/rider combination per entry form.
- All signatures are required on entry form, including rider and owner. WEC reserves the right to decline incomplete entries.
- Competitors may arrive on the show grounds from 1:00 p.m. - 9:00 p.m. on Friday, August 27th.
- A copy of your horses 2010 Coggins is required with every show entry. Please bring the original to the show with you.
- Show jackets are not required. However, appropriate riding boots and dressage tack are required, according to USEF rules.
- ASTM/SEI approved helmets are required for all riders 18 years of age and under. WEC suggests that all riders, while mounted, wear an ASTM/SEI approved helmet.
- No refunds will be given after closing date. Prior to the closing date, refunds will only be given with a veterinarian and/or doctor's certificate. Only class fees will be refunded. No refunds on office or stabling fees.
- Entries close: **August 14, 2010** – must be postmarked by the closing date.
- Ride times will be emailed to all riders. Please provide an email address on your entry form. Ride times will also be posted on www.foxvillage.com. Please do not call Wisconsin Equestrian Center!
- Questions, please call (920) 819-2891 or e-mail at DEBLMEYE@aol.com.

WEC Reminders:

- Food will be available on the show grounds.
- Ribbons and High Point awards will be presented.

REMINDER: Please sign waiver on reverse side.

Check or money order, payable to
Wisconsin Equestrian Center, Inc. for all entry fees.
 Please mail entry form, coggins and fees to:
 Deb Heier – Competition Secretary
 898 Roscoe Street • Green Bay, WI 54304
ENTRIES CLOSE: August 14, 2010

• Put an "X" in the box of the class you would like to ride in. •

<input type="checkbox"/>	U10	USDF Intro A – Open
<input type="checkbox"/>	U1J	USDF Intro A – Jr./Yg. Rider
<input type="checkbox"/>	U20	USDF Intro B – Open
<input type="checkbox"/>	U2J	USDF Intro B – Jr./Yg. Rider
<input type="checkbox"/>	T10	Training Level 1 – Open
<input type="checkbox"/>	T1J	Training Level 1 – Jr./Yg. Rider
<input type="checkbox"/>	T20	Training Level 2 – Open
<input type="checkbox"/>	T30	Training Level 3 – Open
<input type="checkbox"/>	T40	Training Level 4 – Open
<input type="checkbox"/>	110	First Level 1 – Open
<input type="checkbox"/>	120	First Level 2 – Open
<input type="checkbox"/>	130	First Level 3 – Open
<input type="checkbox"/>	140	First Level 4 – Open
<input type="checkbox"/>	210	Second Level 1 – Open
<input type="checkbox"/>	220	Second Level 2 – Open
<input type="checkbox"/>	230	Second Level 3 – Open
<input type="checkbox"/>	240	Second Level 4 – Open
<input type="checkbox"/>	310	Third Level 1 – Open
<input type="checkbox"/>	320	Third Level 2 – Open
<input type="checkbox"/>	330	Third Level 3 – Open
<input type="checkbox"/>	410	Fourth Level 1 – Open
<input type="checkbox"/>	420	Fourth Level 2 – Open
<input type="checkbox"/>	430	Fourth Level 3 – Open

Entries = \$20 per class	\$
Stabling = \$30	\$
Haul-In Fee = \$20	\$
Bedding = \$7 (per bag)	\$
Tack Stall = \$30	\$
Late Fee = \$15	\$
Non-Compete Fee = \$25	\$
Camper Hook-up = \$20	\$
Class Sponsorship = \$15	\$
Office Fee	\$ 10.00
GRAND TOTAL	\$

STABLING REQUESTS: _____