

FEBRUARY 2011

EQUESTER

A monthly publication of the Wisconsin Dressage & Combined Training Association

President's Message

The New Year Promises to be a Winner for Members

Pam Doolittle

Starting Off with a Bang!

What a great start WDCTA has had to 2011! Our membership roster is off to a healthy start with more than 130 new and renewing members. I want to extend a special welcome to ALL our 2011 business members, and encourage you, our members, to check out the wide range of services they offer, which are so essential to supporting our sport. From [Excalibur Insurance](#), supplying a range of insurance products to protect your farm, business, and horses, to [Midwest English Tack](#), outfitting riders and horses alike, to [Silverwood Farm](#), offering a fantastic show series throughout the outdoor season, as well as boarding and training services—these are only a few of



Pam Doolittle and Contigo

the hardworking professionals listing with WDCTA that support dressage, eventing and the horse industry in general. Please support them with your business!

board voted to expand our scholarship program to include opportunities for professionals. For 2011, we now have \$1,500 of money restricted to supporting the education of our members no matter their status of amateur, junior/young rider, or professional. If you are pondering attending an educational program in 2011, consider applying for some [funding](#). Recipients will, in turn, share their experiences with WDCTA members by writing an article for the newsletter or presenting at one of our chapter meetings.

Even more funding opportunities exist through [The Dressage Foundation](#). Funds are available for a variety of educational and professional development goals—“from grass roots to high performance, from Pony Club to Century Club!” Even though the funds come from The Dressage Foundation, WDCTA chapter and state officers can help by offering letters of support, or by simply helping to make connections so you can get your questions

Continued on next page

WDCTA Annual Conference

Feb. 19

There's still time to register!

See pages 19 & 20.

COLLECTION:
JJ TATE, SPEAKER

STRAIGHTNESS:
ETHICS IN THE SPORT

IMPULSION: SHOPPING

CONTACT: MARTIAL ARTS

RELAXATION: SPA & FRIENDS

RHYTHM: BALLROOM DANCING

WDCTA'S DRESSAGE TRAINING SCALE

New Programs to Benefit Members

Some of our new initiatives for 2011 involve trying to communicate more opportunities for you, our members. There is so much to report on this topic! Besides the events already listed on our calendar, we've revised some of our programs to be more accessible to you. During our November meeting, the state

President's Column...continued

answered to put together the best possible application. Look for more information on The Dressage Foundation in the pages of the **eQuester**.

USDF programs help support your goals

Included with your WDCTA membership is free access to USDF's **e-TRAK**, an outlet of video and other educational media for your perusal. Members also are eligible for a free subscription to **Barnby Notes**. This is really a cool service that offers a lot of options! You can follow professionals in their training journeys. Eliza Syndor, for example, shared [her thoughts](#) on whether it's possible to *train* horses to show off a big presence in the ring or not. Or perhaps you would rather privately journal your own experiences to follow your progress? This service is available to you too. If you have questions or problems accessing any of these services, please feel free to ask us for help.

Remember, WDCTA is here to serve as your educational partner. More opportunities for learning, educational support and awards are listed in the **eQuester** pages, and we will continue to remind and update you on the benefits included with your membership with online communications, too.

News from the East Side of the State

New in 2011: a revitalized Eastern chapter! Please join me in welcoming Paula Rush to the state board in her role as Eastern chapter president. Also leading the Eastern chapter are Jennifer Callies as vice president and Tara Ragatz as secretary. Plans are already in the works for an "Introduction to Dressage" clinic, featuring some of the instructors listed in the WDCTA instructor directory, and an Eastern chapter schooling show. In addition, our member-at-large, Stephanie Severn, is working with some Northern chapter members on some planned activities for this year. Watch our website and Facebook pages for develop-ing news.

Goodbye and Thanks, Hello and Thanks

I want to close this message by extending a very special thank you to Mary Hanne-man, who is leaving the membership chair position beginning Feb. 1. She is also handing off the reins of our dressage awards program. Mary has been a tireless volunteer and advocate for WDCTA for many years, serving in a variety of leader-

ship roles both at the chapter and state levels. She approaches everything she does professionally and leaves every program, document and idea always better from her input. She has been a patient and kind counselor to me as we navigated our year of transition and "getting back to basics" in 2010. One board member fondly refers to her as our board's "Voice of Reason." One thing I really love about her is her fantastic laugh, which is infectious and joyful, and really reaches all the way to her soul. When I hear it, I can't help but join in!

Besides all her volunteer work with WDCTA, Mary is a serious rider and competitor with her partner, Pheobus (a.k.a. Phil). Phil has locks and a build like Fabio (different hair color, though), and is always impeccably turned out. Mary did all the work in the saddle in earning her USDF Silver medal and is now working toward one of the top honors in our sport—the Gold medal.

Mary will continue organizing events for WDCTA, including serving as co-organizer of the Steffen Peters and Janet Foy symposium scheduled for November 2011. Mary, I will miss your presence, input and that wonderful laugh at our state board meetings, but I look forward to the many events you'll be pulling together for our members. From "Thinking Outside the Training Scale" and the Janet Foy clinics to the Steffen Peters and Janet Foy symposium, your work will continue to forward our WDCTA membership learning curve and inspire us to be better horse men and women. Know that I will remain one of your cheerleaders at the rail, and forever a Pheobus fan, as you two continue on your golden path. I know you can do it!

Welcome and thank you to Diane Brault, who joins our state board as the 2011 membership chair. And likewise, welcome and thank you to Rita Pultz, who will be leading our awards program for 2011.

With new opportunities for members, better educational services, revitalized local chapters with exciting plans in the works, and an influx of new leadership in our chapter and state roles: My friends, it is a great time to be a WDCTA member!



WDCTA Members are
Group Members
of the
United States Dressage
Federation

**WDCTA is Wisconsin's
oldest and largest GMO**

Editor

Caryn Vesperman
(608) 455-2208
newsletter@wdcta.org
W1619 King Road
Brooklyn, WI 53521

All advertisements, articles and photographs (with photo release) should be submitted electronically to the editor by **the 15th of the month**, with payment for advertisements postmarked no later than the 15th. Ads and calendar of events submissions will appear in both the **eQuester** and on the website.

Advertising rates and requirements are under Forms on www.wdcta.org.



Charter

GROUP
MEMBER
ORGANIZATION

On the Bit

Caryn Vesperman, editor

The New Year has certainly hit with a wintry blast! Following some of my friends' adventures via Facebook makes me wish I was with them in sunny Florida. The closest I got to riding in the warmth without a coat and winter boots was competing at an indoor show a few days ago.

I knew Sally would be her usual solid citizen. (And I thought it was fun that her bridle number was the same as her age. She continues to surprise people that she is 22.)

On the other hand, I did expect my five-year-old, "Robby," to have extra energy from having so many days off prior to the show because of the cold.

Needless to say, it was more than that. The snow melting off the facility's metal roof and sliding off onto another metal roof (sounding like someone pounding on a kettle drum) caused Robby and many other horses to spook. And it didn't get better for Robby for the rest of the show. Let's just say, meltdown continued from the roof which led to an equine meltdown.

Like a young child who gets worse without sleep, he was terrified in the ring by Sunday. And mad that he had to be there. My last first level test was complete with spooks, spins, front foot stomping, reluctance to go forward, and a 180 degree turn when I halted at X for the entry salute. (He decided the test should be much shorter



and we should leave right after the salute!) I made him go and didn't care if the judge *did* hear my voice aids.

We got through the test and as I walked forward after the final salute, I saw the judge leaving the booth and walking toward me. Oh, oh, I thought. I must have really messed up.

Instead she told me she saw how hard I worked to get my horse through the test, that I handled it exactly like I should have because I didn't get angry, just insisted on forward. She said I wanted to tell you that you are a good rider and that even

though you are going to get a low score, I can tell from his muscling that his training is correct. That really made my day because, I must admit, I was a bit shaky after that ride! What an encouraging judge at such a critical moment! (A friend of mine was there to apprentice judge. I asked him later if I gave him enough extracurricular activities for him to write about on that test!)

In spite of that, the show was a great way to break up a long, dreary winter by getting away and hanging out with friends.

So in spite of that inauspicious start to the "show season," my two serious riding goals this year *still* are: (1) aim Rapazzini for the young horse championships again (the snow should be gone by then!), and (2) enjoy showing Salope a few more times at Grand Prix, while she is sound, happy and willing.

What goals would I set for all of *you*? Besides meeting your riding goals, here's another good one: That you feel the unbridled joy from submitting a photo, news item or article to the newsletter! (Did you really think I could do a column that didn't beg for submissions?)

Here's to a great 2011 where we meet our riding goals or at least have a great time trying!

WDCTA State Board

President

Pam Doolittle (608) 644-9423
president@wdcta.org

Vice President

Martha Flury (262) 723-2656
vp@wdcta.org

Secretary

Sue Genin (608) 882-6580
secretary@wdcta.org

Treasurer

Angela Genin (608) 516-2293
498 Cledell Street #3
Oregon, WI 53575
treasurer@wdcta.org

Historian

Anne Zaharias (906) 864-2790
historian@wdcta.org

Video Librarian

Donna Thomas (608) 835-8549
librarian@wdcta.org

Members-at-Large

Stephanie Severn (608) 213-8925
mal1@wdcta.org

Chet Thomas (608) 835-8549
mal3@wdcta.org

Open

mal2@wdcta.org

Membership Recorder

Diane Brault (608) 924-1808
5184 County Road HH
Barneveld, WI 53507
membership@wdcta.org

Dressage Recorder

Send forms to:
Rita Pulz
5593 Bellbrook Road
Brooklyn, WI 53521
dressagerecorder@wdcta.org

Eventing Recorder

dressagerecorder@wdcta.org

Kettle Moraine President

Martha Flury (262) 723-2656
km@wdcta.org

Southwest Chapter President

Donna Thomas (608) 835-8549
sw@wdcta.org

SW Chapter Representative

Pam Doolittle (608) 644-9423
president@wdcta.org

Upper Peninsula President

Karin Steffens (906) 346-6497
up@wdcta.org

Editor

Caryn Vesperman (608) 455-2208
W1619 King Road
Brooklyn, WI 53521
newsletter@wdcta.org

Website Coordinator

Stephanie Severn (608) 213-8925
website@wdcta.org

Meet Your 2011 State Board Members

Get to know your
state board members

Membership Chair

Diane Brault

*This month,
Diane takes
over for Mary
Hanneman as
membership chair.*

Where do you live?

A few miles north of Barneveld, WI

What do you do for a living?

Elementary teacher, recently retired.
Hooray!!!

Family?

Husband, Terry, also a retired teacher, and
three Arabian mares, "the girls."

Other pets besides horses?

No. Wait—a baby vole snuck into our
house last week and my husband treats it
like a pet. Even named it "Snooty." He
didn't want me to put out rat poison for
the little guy to dine on, allowing it to
search for crumbs under the kitchen table
instead! Sounds like a pet, doesn't it?!

How many horses do you have?

Three Arabian mares

If you take lessons, who do you ride or clinic with?

No one in particular. I audit dressage and
natural horsemanship clinics, and read to
learn as much as I can.

Favorite horse and why?

Barbie. She is the most challenging horse
I've owned in some 45 years. My usual
training methods failed to help her, so she
"pushed" me into learning natural
horsemanship, with me "kicking and
screaming all the way!" In spite of that, or
because of that, we are quite bonded
with each other, like few other horses I've
owned.

What's your favorite book or movie?

"The Black Stallion" comes to mind....
hmmmm.... Also, Deb Bennett's "Birdie
Book" and Michael Schaffer's "Riding In
The Moment."

Most interesting experience with a horse at home, at an event or a competition?

I used to train horses for a small Arab
breeding farm. One spring, I
began saddle training two three-
year-old fillies: One who was
quite lively, and the other who
was so laid back that a
professional trainer simply gave
up on trying to teach her to
show at halter. You can guess
which filly I thought would be
"easy" and which would give
me a run for my money.... But
that's where logic ends. The
spirited filly was as good as
gold, and the mellow mare
bucked me off on the first ride!
Thus began my slow realiz-
ation that I should try to avoid
making judgments and
assumptions about what
horses will and won't do!

What or who inspires you with your riding?

Karen Rohlf, Deb Bennett,
Jane Savoie, Michael Schaffer



Both photos: Diane and Barbie

Do you do dressage, eventing or both? Dressage, trail riding

What was the most fun horse experience you've ever had?

Two things. Riding horses in true collection
is an absolute, sublime joy, particularly
when their training was my accomplish-
ment. Also, I spent a week at The Natural
Gait farm in Iowa, trail riding. My timid,
flighty little Arab mare who notices every-
thing and is ready to shy from anything,
became the leader of our little group of
two trail riders. She even took the lead on
river crossings, even though the rivers
were running fast and were 30 to 40 feet
wide and 2 to 3 feet deep! She blew my
mind! I was so proud of her that I had to
have my friend take pictures of her every
single time we ventured into the rivers!

If you were in a karaoke contest, you'd sing what song?

Bette Midler's, "The Wind Beneath My
Wings"

Favorite junk food?

Chocolate!

Anything else?

I'm looking forward to getting to know
people in WDCTA and more years of
learning, learning, learning!



Clinic with JJ Tate: It's All About *Reaction*

By Mary Hanneman

Thanks to a scholarship provided by WDCTA's Southwest Chapter, I was able to participate in a two-day clinic with Jessica Jo (JJ) Tate at Stonegate Equestrian Center in Hazelhurst, WI. I've worked with JJ since I "discovered" dressage in 1999 when she and Greta Larson Pell started their business, Wyn-gate Dressage Center, in Walworth, WI.

Since those early beginnings, I've taken regular lessons with her and even had the opportunity to be one of her working students for two seasons in Wellington, Florida.

My reason for providing this background is to point out that JJ knows the strengths and weaknesses of my equine partner, Phoebus (a.k.a. Phil), and me frighteningly well.

Since JJ hadn't seen us for several months, she observed our warm-up on the first day and offered advice for improving efficiency. Phil has always been a

slow warm-up, sometimes taking 20 to 30 minutes to get his back relaxed and swinging plus forward off my leg.

Today, JJ tells me it is time to stop the cajoling—demand that Phil get to work... NOW. We were preparing to debut at Prix St. Georges, so from now on JJ advises that it's "all about the reaction to my aids." I must be able to get Phil "hot off my leg," active and engaged in the hind leg and in an uphill frame.

Phil is very laid back, which is a wonderful attribute when we take our hour-long hacks at home, but it doesn't make for a very successful FEI level horse. JJ makes her point hit home as she explains that if I don't achieve a "yes ma'am" response from Phil, I won't have

the physical strength to get through the FEI tests.

The Warm Up

To help develop a more sensitive, responsive horse, JJ guided me through a warm-up that started in a working frame, asking him to step under rather than allowing his hind legs to be strung out to Cleveland.

First, I got him forward and swinging, then tested to see if the "more forward"

ent thinkers who take responsibility for the training and well-being of their own horses. Since she can't be with us every day, she wants us to have the confidence to decide on our own training approaches and know how to fix problems as they arise.

Because I feel that the half pirouettes (especially to the right) are our weakness and our flying changes are our strength, I decide to focus on these two movements.

In preparation for working on the pirouettes, we begin by developing a rhythmical, collected canter. The tricky thing with asking Phil for a collected gait is that he equates being collected with slowing down. I must keep a metronome ticking in my head in order to maintain a rhythmical, jumping feeling in the collected canter.

Once established on a 15-meter circle, JJ asks me to move Phil first off my outside leg three strides

into the circle, then forward three strides on the new circle, then three strides off my inside leg back to the original circle.

It is harder to do than it sounds. First, Phil doesn't react to either of my legs, then he needs more than three strides to move sideways or forward. The goal of the exercise is get equal and balanced reactions from whichever leg I apply, which ultimately will help correct his tendency to fall in on the right pirouette and turn too large in the left pirouette. As a bonus, the exercise helps us develop a good pirouette canter.

Next JJ looks at our changes...4's, 3's, 2's. Even though Phil has always been a change-meister, now that we're working on tempi's, each change seems to



JJ encourages Phil to use his hindquarters underneath himself in a lesson focusing on engagement and forward.

button was accessible. Once forward, but not running, we tested "sideways" by starting in the corner of the long side and asking him for sideways across the entire arena as quickly as possible. These exercises were done at both the trot and canter until he was swinging, stepping under and offering forward instead of bucks at the canter.

It's always about the basics...JJ stresses that it just doesn't pay to start the movements before we are forward and totally through.

Day One Focus

Now we're ready for the work. On day one of this clinic, JJ asks what I'd like to work on. Her goal as a trainer and coach is to develop her students into independ-

Continued on next page

JJ Clinic continued...

become slower and flatter once we get beyond the third change in any series.

Today, JJ has me work on doing five 4-tempi's, five 3-tempi's and five 2-tempi's from a medium canter. I have to concentrate on sitting back on my **A.R.***, keeping my shoulders flat and controlling the swing of my leg with each change (sometimes my legs get a little wild).

Once we've achieved a nice uphill series of five changes for each tempi, JJ asks for a series of seven changes of 4's, 3's and 2's. All ends well in the world of changes on day one.

Day Two Wrap-Up

Today we focus on improving the half pass at both trot and canter, mediums at trot and canter and half steps. After our warm-up, JJ helps me by walking along side with an in-hand whip to help Phil understand engagement and hind leg activation or half steps. Phil doesn't approve of this exercise and warns JJ with a kick in her general direction. JJ responds with a sound smack to the offending hind leg and Phil explodes into action. Good thing I've learned to have my little finger slipped through the buck strap of my saddle. My butt remains in the saddle. Phil is ready to go...sensitive, forward and through.

Next we work on improving the half pass at both the trot and canter. Phil either bends or goes sideways; he feels it's totally unnecessary to bend AND move sideways at the same time, as required in the half pass. JJ introduces an exercise to promote the bend and develop Phil's sensitivity to my leg. She has me develop the bend coming out of the corner, then ask for sideways off my outside leg for three strides, then straight ahead off my inside leg for three strides, then sideways again off my outside leg and keep repeating the length of the arena.

The goal is to get Phil listening to whichever of my legs is the active leg. Again, with Phil, it's all about the reaction to my aides. Are you seeing a theme with these exercises?

We finish each lesson with stretching serpentines, exaggerating the bend in each direction, asking Phil to give 100% until all of his neck muscles are jiggling and his mane is flipping from side to side with each bend.

Walk, long reins, praise him.

It's All About Me

One of the key things that I really appreciate about my lessons with JJ is that she spends time focusing on my position. As a long-time hunter/jumper rider, my muscle-memory perches me forward in the saddle with way too much rein release. Getting the feel for "contact" has been a very difficult transition for me to make.

JJ has me sit taller than I would ever think possible...just when I think I *am* sitting tall, she asks me to stretch TALLER. She has me think about stretching the distance from the center of my bra to my belly button, making the distance as long as possible. She also coaches me to flatten my shoulder blades and bend my elbows as if I were pushing an overfilled wheelbarrow.

So much to think about, so little time.

Thank you, WDCTA-SW Chapter, for providing the funding that allowed me to participate in this clinic.

Want to hear more about JJ Tate's teaching and training philosophies? Wondering what the heck is an A.R.?

Join us on Feb. 19 for WDCTA's Annual Education Conference in Madison and hear JJ's motivational and entertaining insights into the world of dressage.

Check out the schedule and reservation form on pages 19-20.



Join in the WDCTA member discussion on Facebook!

Even if you aren't much for participating in chat rooms or blogs, the WDCTA Facebook site is the one to join to stay connected in-between the issues of the newsletter and your chapter meetings.

Go to Facebook and search for Wisconsin Dressage & Combined Training Association.

Riding:

*The art of
keeping a horse
between you
and the
ground.*

Member of the Year Nominations



Andrea Schten

Andrea Schten: My husband and I have been schooling with Andrea for approximately one year. During this time, Andrea has given us the best guidance and coaching that we've ever experienced. She is the consummate professional and an exceptionally versatile horsewoman. One of the things that impressed me the most when I first started schooling with Andrea is the respect that she gives to all of her students—no matter what level of knowledge they have. From novice riders to professional trainers, Andrea has the ability to accurately assess key areas to focus on in order to achieve positive results for both horse and rider. My skills—both under saddle and in-hand—have increased ten fold since schooling with Andrea. My husband, who takes in-hand and long-lining lessons with Andrea, has gained a wealth of knowledge from her as well. Along with being a kind, patient and fun instructor, Andrea is extremely versatile. In addition to schooling me in classical dressage on my Half-Andalusian stallion, she is preparing us for pre-novice eventing this year—which is a dream that I didn't think would ever come true until I met Andrea. She has also provided excellent instruction for my husband in long-lining our Gypsy Cobb gelding as we prepare him



Stephanie Severn

to drive this spring. Andrea has provided us with key essentials for several of our green horses. And, she is keeping me “tuned up” on my Paso Fino stallion, as well as helping us prepare for competition trail classes this coming show year.

My life-long goal is to be an all-around horsewoman. Andrea is helping me achieve that goal. Her common sense approach, in-depth knowledge of classical dressage and horsemanship, keen ability to assess and correct problem areas and great “people” skills make her an absolutely phenomenal instructor.

Andrea has earned the admiration and respect of everyone at our barn—from barrel racers who want help with flying lead changes to junior Olympic hopefuls who want to go all the way to the top. Andrea has enriched the abilities of all who are fortunate enough to have schooled with her. *-Submitted by Erin Whalen*

Stephanie Severn: Stephanie is a great example of the positive energy we seek in our organization. She is forward-thinking, organized and committed to our mission. And in only one year, she has stepped up to serve and excel in critical roles within WDCTA.

I first met Stephanie at some of our chapter functions in 2009. She is a knowledgeable and passionate breeder of sport horses, and was not afraid right from the beginning to share her enthusiasm, knowledge and fresh ideas about the sport and how our club could be supportive. As a new member and friend of the chapter, she took a front-row seat in leading WDCTA through the 2010 transition by joining our chapter leadership as alternate representative, and joining our state board as a Member-at-Large, and Junior/Young Rider



Pam Doolittle

contact, as well as taking on the role of website coordinator.

While it was important to reflect on the past in order to make positive changes for WDCTA, Stephanie was and continues to be clearly focused on progress and the future of our organization. Her ideas include a state-wide supported USDF instructor certification program, and implementing a program that connects interested members with our local (Wisconsin-based and WDCTA-listed) instructors. She has advocated for our group to consider using a list-service as a quick and easy way to electronically communicate with members, as well as to implement electronic options for registering and paying for WDCTA events. The WDCTA Facebook group is Stephanie's brainchild. Many of her ideas are continuing to take form and will be fantastic ways to forward our mission and benefit our members.

Besides running her breeding business, Hopeful Farm, in itself a full-time operation, she also works full time and, lucky for WDCTA, her expertise and interest is in technology. This year, she has taken on the role of webmaster as well as web-coordinator, and is leading the charge on the new web design. Features she has proposed will result in a more user-friendly and interactive experience for our members.

And finally, last February, I suffered a health crisis that prevented me from driving

Photo by ShortHorse Studio

Member of the Year...continued

for the first part of the year. I was scheduled to drive to the Upper Peninsula to attend a listening session with WDCTA members and needed a chaperon. Without hesitation, even when I warned I would be taking my 11-year-old daughter, she offered to spend the weekend with us and to drive us six hours north. She dedicated that weekend as well as many other hours to support our members, when there were horses to work, fence to fix, hay to find and "me time" that could have been had.

I hope at the very least, I can express how thankful I personally am for her candor, dedication and enthusiasm. But my wish is that WDCTA might formally recognize her for all she's done to help us since she's joined us. Thank you, Stephanie!

Submitted by Pam Doolittle

Pam Doolittle: A couple of years ago, Pam stepped into WDCTA as the Southwest Chapter representative to do her part to support the sport of dressage in Wisconsin. Little did she know that about a year later, she would be thrust into the role as president of the entire organization, due to a group choosing to split from WDCTA.

Pam took the reins, in spite of much negativity directed at her. I don't know anyone else who could have done the job as well as she has. Seriously.

She has focused on moving WDCTA forward in a positive and productive manner. She has proactively solicited input from the membership so she can represent members who range from amateurs to professionals, from beginners to serious competitors. She has empowered members to use their creativity and ideas to make improvements in many ways. She has championed updating the organization's bylaws to better represent how the organization needs to operate as a service organization and fairly treat its volunteer members.

In addition, Pam has been a prolific communicator for WDCTA. She has contributed many creative and thought-provoking articles for the WDCTA newsletter and the website. She has traveled across the state, numerous times and in horrendous weather, on behalf of WDCTA business. This is time she could have spent with her family or with her horses. But she has done all of this because she believes it to be of utmost importance to run a transparent and open organization and encourage its members to be engaged

and participate in discussions and activities—and to have fun! Pam has been a cheer-leader and supporter of members and WDCTA. She understands and respects all members who contribute as volunteers.

During this time (back in 2009 prior to her becoming WDCTA state president), Pam also volunteered to take over as the organizer of the USDF L program under very difficult circumstances. She managed all of its aspects over the nearly two years the program was run by WDCTA. She did such a good job getting the program back on course, that the USDF recognized her and gave her a gift on behalf of her efforts.

I honestly don't believe WDCTA would have come through this transition if it hadn't been for Pam taking the reins. So many members were beaten down and discouraged by how they had been treated, how the organization had been run, and how the organization's treasury had been seriously depleted by the departing group. But thanks to Pam's leadership, spirit and determination, I believe there is a new vitality to the organization, and I am proud once again to be a part of WDCTA, a charter member of the USDF.

Submitted by Caryn Vesperman

BITS 'N PIECES

News About Members, News to Help Members

KUDOS

Jackie Luebke-Peutz earned awards in the USDF Region 2 Schooling Show Series with two of her horses: 2nd place at First Level Open with Optical Illusion and 1st place with Too Cute To Shoot. Congratulations! More information on the [Region 2 Schooling Show Series](#) is on our website under Forms or contact [Ken Levy](#), Region 2 director.

SPEAKING OF AWARDS: YOU HAVE 7 DAYS...

Sign up for WDCTA's Year-End Championship Awards. There's one for dressage and one for eventing. Remember...you must sign up at least seven days prior to your first show. Application forms can be found under Forms located via the bottom bar on the WDCTA home page. For more information, contact Rita Pultz at awards@wdcta.org.

JANET FOY CLINICS KICK OFF IN APRIL

Believe it or not, it's time to start planning your dressage clinic schedule now. Opening day for applications to ride in the first Janet Foy clinic of the season is Feb. 25. Janet will begin her WDCTA six-clinic series April 8-10. Get your application ready to mail on Feb. 25. For more information about the clinics, contact Mary Hanneman at 608-455-1037 or mahanneman@gmail.com.

STEFFEN PETERS-JANET FOY "THROUGH THE LEVELS" SYMPOSIUM

Auditor and registration forms will be in the newsletter next month. Sponsorship details will soon be available as well.

MEMBERS: Send in your chapter, farm, training or personal news for this column by the 15th of each month to newsletter@wdcta.org.

A First-Timer's Report:

USDF 2010 Adequan/USDF National Convention and Symposium Report

By Pamela Doolittle, WDCTA
President

Early December, I travelled to Jacksonville, Florida to represent WDCTA at the USDF National Convention. Believe it or not, this is the first convention I've ever attended focused around the business of our sport, and I felt a little concerned —let's even go with overwhelmed—that I might not know enough about the *business* of the USDF to be of use. Added to that, I am petrified of flying. Mechanical and weather delays actually tailspin me into cold sweats and unsettled rumblings in my stomach. So when both things happened on my journey to Florida, resulting in a 2 a.m. arrival to the hotel, I was pretty much physically and emotionally spent! As I trekked to the convention area to attend my first meeting, needless to say I was not feeling well.

It only took a few minutes at the registration desk to realize the USDF really has its act together. The staff and volunteers were friendly and efficient. I immediately received a pocket agenda detailing the meetings for the rest of the week, telling me where I needed to go and when to be there. It was also very clear what meetings were important to me as a Region 2 affiliate, and what my duties were as a GMO delegate. I received a thick packet of reports detailing the 2010 accomplishments, 2011 objectives and the motions each committee planned to put forth at the Board of Governors (BOG) meeting. I was aware of many of the issues we would discuss, thanks to a president's Yahoo! group I subscribe to. And in reporting on those issues in the newsletter, I had received feedback from some of our members on what they thought. So it only took about five minutes to feel a whole lot better. One cup of coffee later, I was ready to go to work!

Education and Business Activities

Although there were several shorter educational programs scheduled for the three-day convention, most of the time the members, volunteers, staff and USDF leadership really are engaged in planning the business of USDF and forwarding the

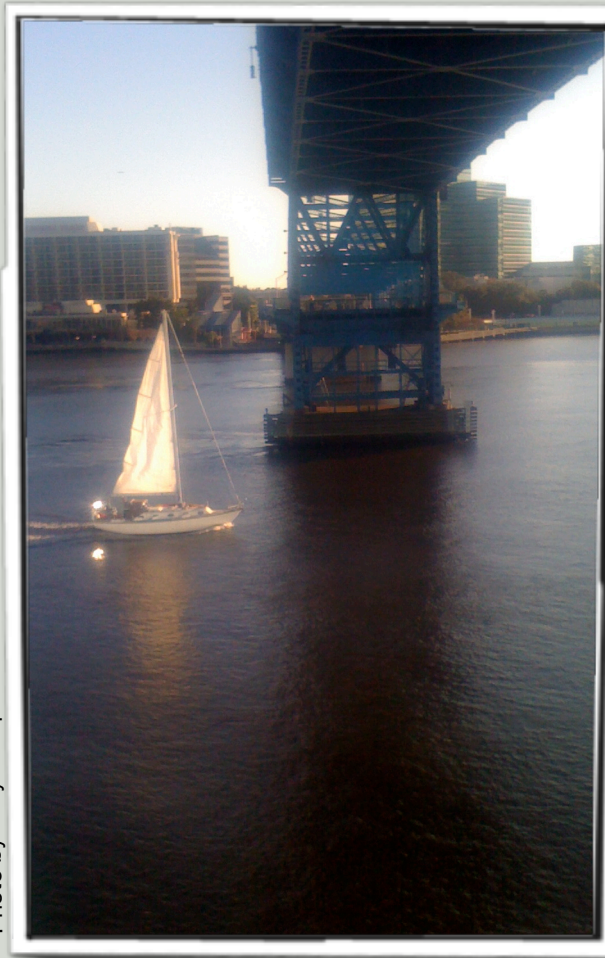


Photo by Caryn Vesperman

The view Pam saw when she was walking along the river right in front of the hotel. The draw bridge lifted to let allow this sailboat to pass under.

mission of the organization. Meetings go from 8 a.m. to 5 p.m.!

I only had time to watch one of the programs on saddle fitting, featuring Jochem Scheese's work. He's a tall, good looking guy, so when he walked out in bright red, four-inch high heels as a way to illustrate how important a good fit is to moving comfortably, he made a memorable first impression! Throughout all these meetings, one theme that stood out is that the USDF is trying to do a better job connecting with its members—increasing educational opportunities through programs like e-TRAK and Barnby Notes, expanding participant access to the L Education Program, providing clearer criteria explaining the navigation of the Awards Program, implementing [online classes](#), and increasing the visibility and importance of good breeding practices to the sport.

Transparency in governance and decision making was something I heard at several meetings.

I attended two Region 2 meetings and was able to connect with presidents and representatives from other GMOs. Region 2 is trying to use a [website](#) to communicate programs, shows and events to members. Also new to me is that Region 2 has an awards program. We've now posted the rules and 2011 application for this program on our website and a reminder to members about this opportunity in the [eQuester](#).

Between meetings, I was able to enjoy a quick cup of coffee with Ken Levy, Region 2 director, and learned we have lots of parallels. He is a PhD scientist specializing in imaging technology, so it was fun to share conversation about the latest imagery used to take x-rays, CAT scans and MRIs. And like me, he also manages a farm, has kids, is a serious competitor and volunteers his time and talents to the USDF.

The Marathon Meeting: The BOG

The BOG meetings are really the marathon meetings of the convention! The two meetings are each three-and-a-half hours long, and we go through the packet of reports and debate the motions put forth by the committees. Elections for some regional positions and USDF vice president were also held. George Williams was fantastic leading the meeting as the USDF president. But equally impressive was that a parliamentarian was seated just to his left, who served as adviser on matters pertaining to Roberts Rules of Order. Members interested in the reports and details can access them [here](#).

The complete set of minutes from the BOG meeting can be accessed online on the USDF website ([Thursday](#) and [Friday](#) minutes). But, one important highlight to share: The USDF Awards Program has undergone some changes, with the goal of encouraging "members to work towards progressive achievement and avoid

Continued on next page

USDF Convention Summary

regressive awards chasing.” The rules of the program perpetuate advocacy “for the welfare of the horse and discourages excessive showing” while remaining consistent and fair to all members. To summarize some of the changes, now a horse may only be eligible to rank in the final USDF year-end award standings for two consecutive levels. Horses ranked in more than two levels will only be ranked at the highest level and the next level consecutive to that highest level. The same now holds true for horse/rider combinations. Changes to the rider awards program now allow the FEI Young Rider Preliminary and Team Tests to be equivalently considered to the Prix St. George accomplishment for earning a Silver medal. Likewise, FEI Junior Team and Individual tests will be listed as equivalent to the third level requirement for the Bronze medal. So as you plan your showing goals for 2011, make sure to check out the updated rules.

Another highlight is a [new Educational membership](#) offered by the USDF. For \$35 for adults and \$10 for those under 21, members can access the educational media offered electronically on the USDF website, as well as enjoy discounts to USDF-sponsored events and USDF business partners such as Dressage Training Online and Dressage Clinic Online. If you know of friends—especially kids and young adults—who are interested in learning about our sport but perhaps not quite ready to jump in as an official competitor, this is a great thing to share.

As incentive to keep folks in their chairs for the six hours of the BOG meeting each day, occasionally breaks from business were used to pick names from a hat to declare winners of the GMO gift baskets. When I handed off our WDCTA basket to the volunteer who coordinates this activity, she oohed and ahed over the fantastic selection and variety of treats and treasure for both humans and horses. Kim Amiri from [Midwest English Tack](#) deserves the credit, since she is the one who pulled it together for WDCTA. A board member for The Dressage Foundation overheard that I had just handed over one of the best baskets for the event and commented that she was not at all surprised, saying, “Well, they have a long standing tradition of putting together a great basket.” Indeed! Bruce Lawrie from Texas and Region 9

Photos by Pam Doolittle



WDCTA basket created by Midwest English Tack (above) and the happy winner from Texas, Bruce Lawrie (right).



was the lucky winner of our basket. He was so excited, he ran right over and gave me a big, sincere hug. And I, who never gets picked for anything except something along the order of jury duty, actually won a GMO basket from my second favorite state, Colorado!

Awards Banquet: Honoring and Reflecting

Friday night was the USDF awards banquet, which really concluded the “convention” portion of the meeting. One fantastic highlight of the banquet was the World Equestrian Games video paying tribute to the wonderful dressage event, organized by Lloyd Landkamer, and the many accomplishments of our team. While it wasn’t a financial success, it seems the FEI remains enthusiastic about the Kentucky Horse Park as a future venue for international and world equestrian sport.

It was a pleasure to sit with WDCTA members Shelly Reichart, her mom Sheri, Caryn Vesperman, Shannon Langer and Jane Hoepfner, and it was really an honor to cheer all our WDCTA members on as they received awards for their many accomplishments.

Out with the Old and In With the New (Tests, That is)

The USDF symposium followed on Saturday and Sunday and featured an introduction to the 2011 dressage tests. Judges Lilo Fore and Gary Rockwell talked the audience through what the test-writing committee’s goals and hopes were for the levels, and each new test was judged by them for all to hear. Each level now only has three tests tied to it. New in 2011 is a third Introductory test, which features a short piece of canter. Rockwell pointed out that the Intro tests focus more on the rider than the horse, but the focus changes to emphasize the horse and its improved balance as the levels progress. Horses presented at Training level are evaluated,

first and foremost, for energy and free forward motion. Most important is that the horse is in front of the seat and leg. They mentioned several times that horses should look “forward thinking.” Fore emphasized that a common mistake riders make is to let go of, rather than maintain, the positive tension of motion in the walk. Also emphasized was the fact that posting through a test is really no problem for judges at Training level. If it helps the horse work over the back, then that’s what riders should do in the ring because there are no “extra points” for sitting.

Riders now have the option of posting or sitting the trot for most of the First level movements as well.

Fore and Rockwell emphasized that the committee tried very hard to explain in the tests’ “directive ideas” (given its own column right on the test sheet) which each movement is judged by. They encouraged riders to read the tests and practice the movements with the directive ideas in mind. Changes to how the collective marks are given were also made with the intent that judges could be clearer in the overall evaluation of horse, training and the rider. The rider marks, for example, are now divided into three components: Position and Seat, Effect of the Aids, and Harmony. I had read these tests when they were first published and wasn’t sure how a judge would evaluate harmony. But after seeing the examples at the symposium, my interpretation is judging the partnership of the pair. Rockwell commented that quiet aids were important. “Passivity goes a long way with horses,” he says. “And it’s always easier to teach a rider to do more

Continued on next page

USDF Convention

rather than less.” He complimented Lynn Palm, in particular, on the harmony between her and her horse during a First level ride, pointing out that what the horse lacked in brilliant gaits, the quiet partnership throughout still resulted in a very good score of almost 73%.

The second day of the symposium continued with looking in detail at the Second through Fourth level tests. While I did not attend, friends who went commented that the qualifying tests seemed especially challenging and that a lot of detail needs to be considered as you’re preparing at home. For example, the lead changes in Third level test three are now expected on the center line! And even though the Fourth level test now only requires the four-tempis, the canter tour is quite complicated, long, and things still happen quite fast. The USDF will post the symposium in its entirety on [e-TRAK](#), so check it out.

Save the Date

The 2011 USDF convention and symposium is scheduled for December in San Diego and the symposium is planned at Steffen Peter’s home base in Del Mar. I have never been to California, so I’m looking forward to experiencing what all that fuss over the weather is about. That’s despite the fact that it means a really long and dreadful time on a plane! Seriously, the USDF will continue to communicate topics, issues and ideas in their *Connections* magazine for you to ponder and weigh in on. Your opinions matter, and as your representative, I’ll do my best to represent your interests. Please keep in touch. Thank you for your input and support.

Horses For Sale

Accolade HF— 3yo Premium Oldenburg Verband gelding by Abke—Coriander. Bred to jump but he’s an incredible mover for dressage. Sweet boy, very easy to handle. Ready to start this summer. Should mature 17—17.2H. A steal at \$15,000! ➡



Coeur de Rouet HF— 4yo Oldenburg Verband mare by Balou de Rouet—Coriander. Grandsire is Rodrigo Pessoa’s Gold Medal Olympic Champion Baloubet de Rouet! Beautiful mare, fabulous movement, bred to jump! Mature 16—16.1H \$16,000 ➡

Savannah HF—Beautiful 4yo mare by Sempatico M. Gorgeous mover with three very good gaits, beautiful color. Started under saddle, soft and easy, trailers, cross ties, clips, bathes. Get noticed in the show ring with her movement and color! ➡ **\$18,500**



Stephanie Severn, Hopeful Farm Sport Horses
McFarland Wisconsin
608.213.8925 · www.hopefulfarm.com
info@hopefulfarm.com



Photo by Amanda Kapellan

A Hit but a Miss! In last month’s issue, the accomplishments of Joann Williams and her Welsh Cobb, Gallod Ffantastic, were missed. The pair won Training Level for the USDF All-Breeds Welsh Pony and Cob Society of America with a 68.8%. No small feat. Congratulations!

HAIKU

BY KATHY BULL

GIVING NOT TAKING
IS IMPORTANT IN LIFE AND
CLASSICAL DRESSAGE

IT’S HOT AND HUMID
RIDING IN BLACK HAT AND COAT
CRAZY TRADITION!

A listing in the Calendar of Events is a service provided to WDCTA members only.

WDCTA-Chapter Meetings

Sunday, February 13

New Eastern Chapter - 1 p.m.
Planning for 2011!
Tara Adicke's home
Grafton

Saturday, March 19

Southwest Chapter - 1-4 p.m.
A Judge's Perspective on the New Dressage Tests for Training and Showing, with noted judge and clinician Maryal Barnett, Madison. Business meeting to follow.

Tuesday, April 12

Southwest Chapter - 6:30 p.m.
Business meeting only.
Location TBA

Tuesday, May 10

Southwest Chapter - 6:30 p.m.
Business meeting only
Culver's, Madison (beltline and Fish Hatchery)

Tuesday, September 13

Southwest Chapter - 6:30 p.m.
Topic and location TBA

Tuesday, October 11

Southwest Chapter - 6:30 p.m.
2012 chapter officer elections
Other topic and location TBA

Tuesday, November 8

Southwest Chapter - 6:30 p.m.
2012 chapter officer elections
Culvers, Madison (beltline and Fish Hatchery)

Saturday, December 10 (tentative)

Southwest Chapter - 1 p.m.
Death by Chocolate holiday party
Date and location TBA

WDCTA Clinics & Events

Feb. 19, 2011

WDCTA Annual Conference & Awards Banquet
Featured guest: JJ Tate
Contact: Pam Doolittle (608) 644-9423
psdoolittle@yahoo.com

Mar. 19, 2011

A Judge's Perspective on the New Dressage Tests for Training and Showing with Maryal Barnett, FEI "C" and USEF "S" dressage judge
1 - 4 p.m., Alicia Ashman Library
733 North High Point Road, Madison
Contact: Pam Doolittle (608) 644-9423
psdoolittle@yahoo.com

Mar. 18-20, 2011

Maryl Barnett Clinic
Hidden Pond Farm, Mazomanie, WI (near Madison)
Contact: Pam Doolittle (608) 644-9423
psdoolittle@yahoo.com

April 8-10, 2011

Janet Foy Clinic
Judd's Green Meadows Farm, Belleville, WI
Contact: Mary Hanneman (608) 712-0975 or
mahanneman@gmail.com

Saturday, April 30

Southwest Chapter schooling day.
Opportunities to ride the new dressage tests for L candidate judges (Introductory - 2nd level tests).

May 6-8, 2011

Janet Foy Clinic
Judd's Green Meadows Farm, Belleville, WI
Contact: Mary Hanneman (608) 712-0975 or
mahanneman@gmail.com

June 18-19, 2011

Maryl Barnett Clinic
Hidden Pond Farm, Mazomanie, WI (near Madison)
Contact: Pam Doolittle (608) 644-9423
psdoolittle@yahoo.com

June 24-26, 2011

Janet Foy Clinic
Judd's Green Meadows Farm, Belleville, WI
Contact: Mary Hanneman (608) 712-0975 or
mahanneman@gmail.com

July 29-31, 2011

Janet Foy Clinic
Judd's Green Meadows Farm, Belleville, WI
Contact: Mary Hanneman (608) 712-0975 or
mahanneman@gmail.com

Sept. 30-Oct. 2, 2011

Janet Foy Clinic
Judd's Green Meadows Farm, Belleville, WI
Contact: Mary Hanneman (608) 712-0975 or
mahanneman@gmail.com

Oct. 15-16, 2011

Maryl Barnett Clinic
Hidden Pond Farm, Mazomanie, WI (near Madison)
Contact: Pam Doolittle (608) 644-9423
psdoolittle@yahoo.com

Oct. 21-23, 2011

Janet Foy Clinic
Judd's Green Meadows Farm, Belleville, WI
Contact: Mary Hanneman (608) 712-0975 or
mahanneman@gmail.com

Nov. 19-20

Steffen Peters and Janet Foy: Through the Levels Symposium
Sponsored by Southwest Chapter
Location: Sunflower Farms, Bristol, WI
Contact: Mary Hanneman at (608) 455-1037
mahanneman@gmail.com

Dec. 10-11, 2011

Maryl Barnett Clinic
Hidden Pond Farm, Mazomanie, WI (near Madison)
Contact: Pam Doolittle (608) 644-9423
psdoolittle@yahoo.com

Continued on next page

COPYRIGHT © 2011 WDCTA



Calendar...continued

Feb. 26, 2011 (tentative, depending upon speaker availability)

WDCTA Annual Conference & Awards Banquet
Save the date! More info to come.

Contact: Pam Doolittle (608) 644-9423
psdoolittle@yahoo.com

Shows (Recognized & Schooling)

May 7th

IDCTA Dressage & CT Schooling Show
Silverwood Farm
Camp Lake, WI
Contact: Lisa Cannata 847-235-6410
dressage@silverwoodfarm.net
www.silverwoodfarm.net

May 13th & May 14-15

Silverwood Dressage - 2 Shows!
Camp Lake, WI
USEF/USDF recognized
Into - Grand Prix
Contact: Lisa Cannata 847-235-6410
dressage@silverwoodfarm.net
www.silverwoodfarm.net

May 28-29

Silverwood Dressage
Camp Lake, WI
USEF/USDF recognized
Contact: Lisa Cannata 847-235-6410
dressage@silverwoodfarm.net
www.silverwoodfarm.net

June 4th

IDCTA Dressage & CT Schooling Show
Silverwood Farm
Camp Lake, WI
Contact: Lisa Cannata 847-235-6410
dressage@silverwoodfarm.net
www.silverwoodfarm.net

June 10 & June 11-12

Silverwood Dressage - 2 Shows!
Camp Lake, WI
USEF/USDF recognized
Contact: Lisa Cannata 847-235-6410
dressage@silverwoodfarm.net
www.silverwoodfarm.net

June 12

Dressage & CT Schooling Show
Sunflower Farm
Bristol, WI
Contact: Phil May 262-857-8555

June 17

IDCTA Dressage & CT Schooling Show
Silverwood Farm
Camp Lake, WI
Contact: Lisa Cannata 847-235-6410
dressage@silverwoodfarm.net
www.silverwoodfarm.net

June 18-19

Silverwood Farm Spring Horse Trials
Camp Lake, WI
Starter-Beginner Novice, Novice Training Levels
USEA recognized
Contact: Lisa Cannata 847-235-6410
eventing@silverwoodfarm.net
www.silverwoodfarm.net

June 24-26

Silverwood Farm NIHJA Show
Camp Lake, WI
Contact: Lisa Froehlig 262-889-4700
promoony@aol.com
www.silverwoodfarm.net

July 9-10

Silverwood Dressage & Sport Horse In Hand
Camp Lake, WI
USEF/USDF recognized
Contact: Lisa Cannata 847-235-6410
dressage@silverwoodfarm.net
www.silverwoodfarm.net

July 24

Dressage & CT Schooling Show
Sunflower Farm
Bristol, WI
Contact: Phil May 262-857-8555

July 30-31

Silverwood Dressage
Camp Lake, WI
USEF/USDF recognized
Contact: Lisa Cannata 847-235-6410
dressage@silverwoodfarm.net
www.silverwoodfarm.net

Aug. 6-7

Silverwood Farm Summer Horse Trials
Camp Lake, WI
Starter-Beginner Novice, Novice Training Levels
USEA recognized
Contact: Lisa Cannata 847-235-6410
eventing@silverwoodfarm.net
www.silverwoodfarm.net

Aug. 13-14

Silverwood Dressage & Sport Horse In Hand
Camp Lake, WI
USEF/USDF recognized
Contact: Lisa Cannata 847-235-6410
dressage@silverwoodfarm.net
www.silverwoodfarm.net

Aug. 19 & Aug. 20-21

Silverwood Dressage - 2 Shows!
Camp Lake, WI
USEF/USDF recognized
Contact: Lisa Cannata 847-235-6410
dressage@silverwoodfarm.net
www.silverwoodfarm.net

Aug. 26-29

Summers End 'A' Hunter Jumper Show
Silverwood Farm
Camp Lake, WI
Contact: Kate Galdi 847-224-3854

Aug. 27

Dressage & CT Schooling Show
Sunflower Farm
Bristol, WI
Contact: Phil May 262-857-8555

Sept. 3-4

Silverwood Farm Fall Horse Trials
Camp Lake, WI
Starter-Beginner Novice, Novice Training Levels
USEA recognized
Contact: Lisa Cannata 847-235-6410
eventing@silverwoodfarm.net
www.silverwoodfarm.net

Sept. 3-4

Silverwood Dressage
Camp Lake, WI
USEF/USDF recognized
Contact: Lisa Cannata 847-235-6410
dressage@silverwoodfarm.net
www.silverwoodfarm.net

Sept. 11

Dressage & CT Schooling Show
Sunflower Farm
Bristol, WI
Contact: Phil May 262-857-8555

Sept. 17

Silverwood Dressage & In Hand Qualifier/Finals
Camp Lake, WI
USEF/USDF recognized
Contact: Lisa Cannata 847-235-6410
dressage@silverwoodfarm.net
www.silverwoodfarm.net

Sept. 24

IDCTA Dressage & CT Schooling Show
Last Qualifier for Schooling Show
Championship
Silverwood Farm
Camp Lake, WI
Contact: Lisa Cannata 847-235-6410
dressage@silverwoodfarm.net
www.silverwoodfarm.net

Oct. 1-2

Silverwood Dressage
Camp Lake, WI
USEF/USDF recognized
Contact: Lisa Cannata 847-235-6410
dressage@silverwoodfarm.net
www.silverwoodfarm.net

Oct. 15-16

Silverwood Dressage & Championship
Camp Lake, WI
USEF/USDF recognized
Contact: Lisa Cannata 847-235-6410
dressage@silverwoodfarm.net
www.silverwoodfarm.net

Non-WDCTA Events

Feb. 12-16

Clinic with Alex Gerding
Touchstone Farm, Brooklyn, WI
Contact: Caryn Vesperman (608) 455-2208 or
touchstonefarm@gmail.com

Mar. 7-10

Clinic with Alex Gerding
Touchstone Farm, Brooklyn, WI
Contact: Caryn Vesperman (608) 455-2208 or
touchstonefarm@gmail.com

Mar. 25-28

Clinic with Alex Gerding
Touchstone Farm, Brooklyn, WI
Contact: Caryn Vesperman (608) 455-2208 or
touchstonefarm@gmail.com

June 3-6

Clinic with Alex Gerding
Touchstone Farm, Brooklyn, WI
Contact: Caryn Vesperman (608) 455-2208 or
touchstonefarm@gmail.com

Continued on next page

Calendar...continued

July 8-11

Clinic with Alex Gerding
Touchstone Farm, Brooklyn, WI
Contact: Caryn Vesperman (608) 455-2208 or
touchstonefarm@gmail.com

Aug. 5-7

Clinic with Gerd Zuther
Touchstone Farm, Brooklyn, WI
Contact: Caryn Vesperman (608) 455-2208 or
touchstonefarm@gmail.com

Aug. 19-22

Clinic with Alex Gerding
Touchstone Farm, Brooklyn, WI
Contact: Caryn Vesperman (608) 455-2208 or
touchstonefarm@gmail.com

Sept. 23-26

Clinic with Alex Gerding
Touchstone Farm, Brooklyn, WI
Contact: Caryn Vesperman (608) 455-2208 or
touchstonefarm@gmail.com

Nov. 4-6

Clinic with Gerd Zuther
Touchstone Farm, Brooklyn, WI
Contact: Caryn Vesperman (608) 455-2208 or
touchstonefarm@gmail.com

Dec. 2-5

Clinic with Alex Gerding
Touchstone Farm, Brooklyn, WI
Contact: Caryn Vesperman (608) 455-2208 or
touchstonefarm@gmail.com

2011 WDCTA Chapter Officers

Eastern

President - [Paula Rush](#) 414-870-1320
Vice President - [Jennifer Callies](#) 262-339-4775
Secretary - Tara Ragatz
Treasurer - [Paula Rush](#) and [Jennifer Callies](#)

Kettle Moraine

President - [Martha Flury](#) (262) 723-2656
Vice President - [Kayla Kuenzi](#) (262) 443-9702
Treasurer - [Joann Williams](#) (414) 378-2231
Secretary - [Kathy Weishampel](#)

Southwest

President - [Donna Thomas](#) (608) 835-8549
Vice President - [Sue Genin](#) (608) 882-6580
Treasurer - [DeAnn Howard](#) (608) 882-4196
Secretary - [Caryn Vesperman](#) (608) 455-2208
Representative - [Pam Doolittle](#) (608) 644-9423
Alternate Representative - [Stephanie Severn](#) (608) 835-1820

Upper Peninsula

President - [Karin Steffens](#) (906) 346-6497
Vice President - [Anne Zaharias](#) (906) 864-2790
Treasurer - [Tracee Horn](#) (920) 346-3624
Secretary - Tracee Skibo

WDCTA Business Members

*Support your WDCTA
business members.*

[Day Dressage](#)
Shelly Day

[Excalibur Insurance](#)
Tom Mikulice

[Hickory Grove Farm](#)
Andrea Schten

[Lindinhof Equine Sports Zentrum](#)
Megan Mclsaac

[Midwest English Tack](#)
Kim Amini

[Pen Bryn Farm, LLC](#)
Valerie Ahl

[Silverwood Farm](#)
Lisa Froehlig

[Stonegate Equestrian Center](#)
Hazelhurts, WI

[Sunflower Farms](#)
Bristol, WI

MarketPlace



Breeders helping breeders since 1999

Midwest Breeders Group

4595 Mahoney Rd. McFarland, WI 53558

midwestbreedersgroup@gmail.com

www.breedersgroup.com

606-213-8925



ANDREA SCHTEN

DRESSAGE INSTRUCTION & TRAINING

BARREAU FARM LLC.

W349S10131 BITTERSWEET CT, EAGLE, WI 53119,

MAIL: PO Box 316, MUKWONAGO, WI 53149-0316

CELL: (262)470-4557 • ASCHTEN@HOTMAIL.COM

WEB: WWW.ANDREASCHTEN.COM

SportHorseProspects.com



Specializing in World Class Bloodlines

Pen Bryn Farm, LLC, Madison, Wisconsin

Owner: Valerie Ahl, Ph.D.

Sales Manager: Fiona Wilby

Phone: 608.698.7924

Email: Fiona@Wilby.com

Val@SportHorseProspects.com

Find your next Dressage/Eventing/Jumping partner horse here!!



Megan McIsaac
President

LINDINHOF EQUINE SPORTS
Zentrum

DRESSAGE TRAINING • SALES • LESSONS
All Levels - F.E.I.

4246 Schneider Dr. • Oregon, WI 53575

(608) 445-8531

lindinhof1@aol.com

www.lindinhof.com

www.nodoubtmcisaac.com

SUNFLOWER FARMS

* PRIVATE *

Full Facility Horse Care Center

19000 128th St.

Bristol, WI 53104

Phil May

Main 262-857-8555

Fax 262-857-3505

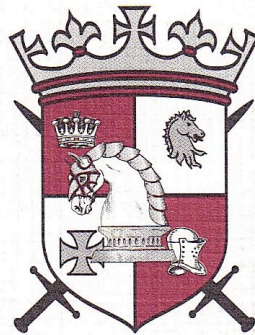
Cell 262-620-4846

reinsman@aol.com

Phil@SunflowerFarms.com

SUNFLOWER FARMS

EXCALIBUR
INSURANCE AGENCY



Equine Insurance

MORTALITY • FARMOWNERS • LIABILITY

Thomas C. Mikulice

800-617-2450

www.excaliburinsurance.com

Local: 262-367-2450 • Fax: 262-367-4250

P.O. Box 500 • Hartland, WI 53029

Day
DRESSAGE



SHELLEY L. DAY

Lessons Training

Will Travel

414.403.8491

www.daydressage.com

sdaydressage04@yahoo.com

Stable - Instructor - Breeder - Business Listings

Listings provided as a service and are not an endorsement of any member or facility listed. Must be a WDCTA member to be included.

Stable Listings

BITTERSWEET FARM LL

Jennifer Kraemer
344 Ct. Rd. FF
Picket, WI 54964
920-589-2709

bittersweetfarm@ntd.net

Clean, well-lite, ventilated 12 x 12' stalls w/mats. hot/cold water, heated tack room, lounge, 70 x 140' indoor w/ mirrors, excellent footing, jumps, small XC field and 20 x 60 m grass outdoor.

BLUE RIBBON BOARDING, LLC

Penny Oneson-DoBas
W3842 Sunset Road
Plymouth, WI 53073
920-207-7077

izhe01@gmail.com

70x200 indoor arena. 12x12 matted stalls. Exceptional care and feeding program. Daily turnout in appropriate herd group or individual paddock. Lessons available.

DUNDEE TRAINING STABLE

Tracy Dikkers
N6482 Silver Road
Monticello WI 53570
608-938-2410

dundee@tds.net

Small private facility, indoor and outdoor. Lessons available.

EQUESTRIAN ENDEAVORS

Erinn Bieber
N4845 Highline Road
Bonduel, WI 54107
715-460-0532

erchelstrom@gmail.com

60 x 200' indoor with mirrors, standard outdoor dressage ring, large pasture turnout or small paddock (individual or small group), wash stall w/ hot and cold water, dressage and jumping instructors at facility and hosts dressage and jumping clinics.

GOLDEN OAK LEAF DRESSAGE

Jessica Kortbeing
27459 Holland Avenue
Tomah, WI 54660
608-387-0293

americ@centurytel.net

GOLDEN HORSESHOE FARM

Angela Rabe
N4609 Hwy. 59
Monroe, WI 53566
414-617-6022

jedknight2@hughes.net

75 x 175' sand outdoor arena, large round pen, large pastures, individual turnout. Lessons, school horses available. Will travel.

GRAND PRIX FARM

Jackie Luebke-Puetz
15034 Hwy. X
Kiel, WI 53042
920-693-3367

cvestor@aol.com

66 x 150' indoor arena w/ mirrors, viewing lounge, h/c wash rack, matted stalls, cleaned daily, 4X/day feedings, screened facility -- no bugs, heated bathroom, hunt course, outside dressage ring, lesson horse available.

HEARTHSTONE FARM INC

Jayne Ayers
W381 S5225 Hwy. ZC
Dousman WI 53118
262-965-2066

www.dressagehorse.com

60 acres, daily turn-out, heated indoor arena, trails on property, retiree board available.

HERITAGE STABLE

Jennifer Strauss
812 N. Griffith Road
Oconomowoc, WI 53066

www.jlssporthorses.com

heritagestables812@msn.com
60 x 120' mirrored indoor w/ new sand/future track footing, new standard-size outdoor arena, 8+ hours of turnout daily -- weather permitting, heated lounge, miles of trails, xc course -- 2' preliminary high fences, river/creek for water therapy and conditioning, dressage/jumping lessons available.

HICKORY KNOLL FARM

Betsy Freiburger
5438 Hwy. M
Fitchburg, WI 53575
608-835-7473

frei@chorus.net

Indoor and outdoor arena, turnout, heated lounge, wash stall, trails and lessons.

HOPEFUL FARM SPORT HORSES

Stephanie Severn
4595 Mahoney Road
McFarland, WI 53558
608-213-8925

hopefulfarm@gmail.com

Small, private facility on 41 acres, 12 x 14' matted stalls, 80 x 175' outdoor arena w/ solid footing and Triple Crown 3-rail fencing. Daily turnout in appropriate herd group. Over a mile of excellent trails surrounding the pastures. Buckeye Feed available.

LINDINHOFF EQUINE SPORTS ZENTRUM

Megan McIsaac
4246 Schneider Drive
Oregon, WI 53575
608-445-8531

Lindinhof1@aol.com

Indoor with mirrors and 80 x 200 sand outdoor. Individual and group turnout. Wash stall. Num-erous trails. Solarium. Lessons and monthly training available.

PEN BRYN FARM, LLC

Valerie Ahl
4321 State Road 138
Oregon, WI 53575
608-698-7924

val@sporthorseprospects.com

Full-service facility, individualized care. 76' x 126' indoor arena w/ mirrors, a 100' x 200' outdoor arena w/ dressage arena, trails, jumps, cross-country obstacles.

PRATT STABLE

Paula Pratt
8434 Central Sands Road
Bancroft, WI 54921
715-335-4130

prattfarm@hotmail.com

Boarding, lesson, breeding, training facility. 70 x 140' indoor w/ rubber footing, mirrors. Three full outdoor arenas, two round pens, jumps, trails. Heated tack rooms, lounge and wash rack. Matted stalls, daily turnout, cleaning. Dressage clinics, lessons and lesson horses.

ANDREA SCHTEN

Hickory Grove Farm
W336 S8510 County Road E
Mukwonago, WI 53149
262-470-4557

aschten@hotmail.com

USDF Bronze and Silver Medalist. Regional championships - Training thru I-1 on self-trained horses. Accepting approved horses in training. Specialize in assisting amateurs move up the levels.

SENTINEL FARM

Anne Zaharias
W4769 Million Dollar Road
Menominee, WI 49858
906-864-2790

sentinelfarm@mari.net

70 x 150 indoor, 100 x 200 outdoor. D-level XC course, 12 x 12' matted stalls, heated lounge, hot water wash rack, private paddocks or group pasture turnout.

SILVERWOOD FARM

Lisa Froehlig
P.O. Box 192
Camp Lake, WI 53109
262-889-4700

promopony@aol.com

Heated barn, 7 outdoor arenas, 80 x 160' mirrored indoor arena, wash stalls, large wood-fenced pastures, rehab turnouts, 100 acres with XC courses, four FEI trainers.

SUNFLOWER FARM

19000 - 128th Street
Bristol, WI 53104
262-857-8555

reinsman@aol.com

7 heated barns, 3 indoor heated arenas, 3 outdoor dressage rings, 24-hr. security, 170 acres.

Continued on next page

Instructor Listings

JAYNE AYERS

Hearthstone Farm Inc.
W381 S5225 Hwy. ZC
Dousman, WI 53118
262-965-2066
www.dressagehorse.com

Have produced many horses and riders who are national award winners. Specialize in teaching rider seat and aids, as well as using FEI judging skills to coach for competitions. Ridden thru G.P.; many USDF Horse of the Year awards, long-listed U.S. equestrian team. 40 years teaching experience, beginner thru G.P. Will travel. School horses available.

ERINN BIEBER

Equestrian Endeavors
N4845 Highline Road
Bonduel, WI 54107
715-460-0532
erchelstrom@gmail.com

Shown and trained through I-1 and earned USDF Bronze and Silver medals. Will teach all levels. School horses available. Will travel for lessons and available for clinics. Will trailer and travel to shows.

SHELLEY DAY

1324 S. 124th
West Allis, WI 53214
414-403-8491
sdaydressage04@yahoo.com

USDF Bronze & Silver Medalist,; USDF award winner; completed through I1 on self-trained horse. Have 25 years teaching & training experience. Will travel in Wi & IL. School horses available. Reference available upon request.

KIMBERLY DEATON-IWEN

Wisconsin Equestrian Center
2486 Old Martin Rd.
DePere, WI 54115
920-737-4936
giwen@new.rr.com

Training, instruction, clinics offered. USDF Gold, Silver, Bronze medalist. Several national awards including USDF Horse of the Year on self-trained horses. USET developing list. Enjoy working with all breeds, ages and levels of riders. Have trained with many European trainers over past 30 years. Trailer-in lessons available.

TRACEY DIKKERS

Dundee Training Stable
N6482 Silver Road
Monticello, WI 53570
608-938-2410
dundee@tds.net

USDF Bronze and Silver Medalist. "L" graduate w/ distinction. Trained and shown through PSG. Will travel in Madison area.

LISA FROEHLIG

Silverwood Farm
P.O. Box 192
Camp Lake, WI 53109
262-889-4700
promopony@aol.com

20 years teaching experience, will teach Intro thru G.P. 30 years riding experience – USDF Bronze, Silver and Gold Medals. Will do some travel.

AMANDA JOHNSON

6680 W. River Pointe Drive
Franklin, WI 53132
319-331-3241
ajohnsonborchardt@gmail.com

15 years training experience; USDF Bronze, Silver, Gold medals; multiple USDF year-end awards, won CDI competitions, coached students to their USDF Bronze and Silver medals. Will teach beginner thru Grand Prix. Trained and shown Training level to Grand Prix, plus FEI Young Horse. Will travel.

TRACY KISSEL

Serenity Farm
2803 Old Park Road
Sheboygan, WI 53081
920-918-3685
920-457-5353

USDF Bronze medalist. 30+ years teaching experience from Training through PSG. Shown through 4th. Continue training w/ many European trainers. Year-end awards with USDF, WDCTA, AQHA. Associates Degree in Equine Management. Travel for clinics. References available.

BITTERSWEET FARM LLC

344 Ct. Rd. FF
Pickett, WI 54964
920-589-2709
bittersweetfarm@ntd.net

Classical dressage (Training thru 3rd), basic ground work. Experienced through 3rd level, USDF qualified rider, Perofmrnace Horse awards, judge 4-H shows, invovled with USPC, does clinics and will travel.

JACKIE LUEBKE-PUETZ

Grand Prix Farm
15034 Hwy. X
Kiel, WI 53042
920-693-3367
cvestor@aol.com

Ridden for 25+ years, trained with 4 Olympic riders, attend USDF convention, won WDCTA awards and Region 2 schooling awards, as have students. USDF Adult Program Region 2 chair.

MEGAN MC ISAAC

Lindinhof Equine Sports Zentrum
4246 Schneider Drive
Oregon, WI 53575
608-445-8531
Lindinhof1@aol.com

FEI trainer. USDF Gold, Silver and Bronze medals and Freestyle Gold Bar. Competed successfully at Dressage at Devon in 2007. Multiple year-end award winner. Coached students to year-end awards, regional championships and their USDF medals. Will travel to give clinics. 10 years teaching experience, beginners thru GP. Grand Prix school horses available.

PEN BRYN FARM, LLC

4321 State Road 138
Oregon, WI 53575
608-698-7924
val@sporthorseprospects.com

Several on-site instructors willing to work with all ages, toddlers through 4th level dressage. School horses available. Instructors will do some travel and have references.

ANDREA SCHTEN

Hickory Grove Farm
W336 S8510 County Road E
Mukwonago, WI 53149
262-470-4557
aschten@hotmail.com

USDF Bronze and Silver Medalist. Regional championships – Training thru I-1 on self-trained horses. Accepting approved horses in training. Specialize in assisting amateurs move up the levels.

NICOLE TRAPP

1207 White Sands Court
West Bend, WI 53090
920-960-6930
trappnl@hotmail.com

Competed thru 2nd Level, trained thru 4th. Evented thru Training. 15+ years teaching experience. Audited USDF Instructor Certification program. Passed USDF "L" Judge program w/ distinction. USDF regional/HOY breed awards. Lesson/ training programs to fit any budget. Will travel. School horses. Will start young horses.

KATE VAN SICKLEN

Silver Spring Farm
3031 Timber Lane
Verona, WI 53593
608-845-6630
katevsh@tds.net

British Horse Society Instructor. USDF "L" Program graduate with distinction. USDF Associate Instructor. USDF medalist, shown thru Prix St. George. 30+ years teaching experience. Will teach thru 4th Level. Specialize in teaching all riders and horses the correct basics. Will travel for lessons.

JOANN WILLIAMS

Cambridge Farm
W3580 Scotch Bush Rd
Elkhorn, WI 53121
414-378-2231
jwcambridge18@yahoo.com

Offering classical dressage for every horse and rider. USDF Gold medalist on self-trained horse. Many students have Silver and Bronze. Multiple USDF regional winner. Travels for lessons/clinics.

ANNE ZAHARIAS

Sentinel Farm
W4769 Million Dollar Rd
Menominee, MI 49858
906-864-2790
sentinelarm@mari.net

USDF Bronze Medallist. Completed USDF Instructor Certification courses. USDF and Breed Championship titles at Regional, National and World levels. Experience with a variety of breeds. Will travel off site.

Continued on next page

Breeder Listings

VALERIE AHL

Pen Bryn Farm, LLC
4321 State Road 138
Oregon, WI 53575
608-698-7924

val@sporthorseprospects.com

Specializing in breeding world-class bloodlines including Lingham, Rotspan, Londonderry, Weltmeyer and Winterprinz.

TRACEY DIKKERS

Dundee Training Stable
N6482 Silver Road
Monticello, WI 53570
(608) 938-2410

dundee@tds.net

Warmblood/warmblood crosses, young stock usually available.

SHANNON E. LANGER

Maple Run Farm LLC
W3465 Market Road
Helenville, WI 53137
(920) 674-6344

maplerunfarm@yahoo.com

Hanoverians of exceptional quality. Bloodlines include Ampere, Bordeaux, DeNiro, Diamond Hit, Rohdiamont, Royal Prince, Sir Donnerhall, Sinatra Song, Fidertanz, Pablo, Winterprinz and Weltmeyer.

JACKIE LUEBKE-PUETZ

Grand Prix Farm
15034 Hwy. X
Kiel, WI 53042
920-693-3367

cvestor@aol.com

Too Cute To Shoot, Welsh Section B, multiple breed championships, WI State Horse Council Championships winner, bay, Farley bloodlines.

STEPHANIE SEVERN

HOPEFUL FARM SPORT HORSES
4595 Mahoney Road
McFarland, WI 53558
(608) 213-8925

hopefulfarm@gmail.com

Breeders of quality German Oldenburg, Westfalen, RPSI and Dutch Warmblood sport horses since 1993. Horses for sale.

Business Listings

RETAIL BUSINESSES

EXCALIBUR INSURANCE AGENCY
800-617-2450

info@excaliburinsurance.com

Equine insurance - mortality insurance, farm owners insurance, instructors and trainers liability insurance.

SHORTHORSE STUDIOS

Heather K. McManamy
2421 West Hill Drive
Fitchburg, WI 53711
608-886-3764

heather@shorthorsestudios.com

ShortHorse Studios is a photography company providing images beyond imagination of equines, pets and people. For more info, please visit www.shorthorsestudios.com.

SPORT HORSE MARKETPLACE

Anna Goebel
4826 South Hill Drive
Madison, WI 53705
608-232-2922
608-232-2922

sporthorsemarketplace.com

Quarterly sport horse magazine specializing in sport horses and ponies for sale, stallion and breeder services, and all goods and services for sport horse enthusiasts, and The Sporthorse Directory: annual stallion directory.

TRAINING, STABLES & SHOW FACILITIES

BITTERSWEET FARM LLC

Jennifer Kraemer
344 Ct. Rd. FF
Picket, WI 54964
920-589-2709

bittersweetfarm@ntd.net

www.bittersweetfarm.us

Family-owned boarding facility available for clinics and day schooling shows.

SHELLEY DAY

1324 S. 124th
West Allis, WI 53214
414-403-8491

sdaydressage04@yahoo.com

USDF Bronze & Silver Medalist,; USDF award winner; completed through I1 on self-trained horse. Have 25 years teaching & training experience. Will travel in WI & IL. School horses available.

GOLDEN HORSESHOE FARM

Angela Rabe
N4609 Hwy. 59
Monroe, WI 53566
414-617-6022

jediknight2@hughes.net

Dressage lessons, school horses available. Training, boarding. Quality horses for sale, Friesian sport horses, clinics.

HICKORY GROVE FARM

Andrea Schten
W336 S8510 County Road E
Mukwonago, WI 53149
262-470-4557

aschten@hotmail.com

USDF Bronze and Silver Medalist. Regional championships - Training thru I-1 on self-trained horses. Accepting approved horses in training. Specialize in assisting amateurs move up the levels.

LINDINHOFF EQUINE SPORTS ZENTRUM

Megan McIsaac
4246 Schneider Drive
Oregon, WI 53575
608-445-8531

Lindinhof1@aol.com

Lessons, sales and training. Tuesday thru Sunday. Open for lessons noon to 6 p.m.

PEN BRYN FARM, LLC

Valerie Ahl
4321 State Road 138
Oregon, WI 53575
608-698-7924

val@sporthorseprospects.com

Our combined breeding and boarding full-service facility offers one-on-one attention for you and your horse.

SILVERWOOD FARM & SHOW FACILITY

Lisa Froehlig
P.O. Box 192
Camp Lake, WI 53109
262-889-4700

www.silverwoodfarm.net

Boarding, rehab, retirement, dressage training and instruction. Host to multiple USEF-USDF-recognized dressage shows. Open 7 days a week, 6 a.m. to 10 p.m. Located 45 minutes south of Milwaukee and 1 hour north of Chicago.

SUNFLOWER FARM !

19000 - 128th Street
Bristol, WI 53104
262-857-8555

reinsman@aol.com

7 heated barns, 3 indoor heated arenas, 3 outdoor dressage rings, 24-hr. security, 170 acres.



WDCTA presents...

Thinking Outside the Training Scale

A Day of Learning, Awards Banquet, Silent Auction & Shopping

featuring **Jessica Jo Tate**

Saturday, February 19, 2011

**Holiday Inn Hotel & Suites West, 1109 Fourier Drive,
Madison, WI**

A born and bred Wisconsinite, Jessica Jo (JJ) Tate moved to the east coast several years ago to pursue her dream of representing the US as an Olympic Team member. Her journey so far is an amazing tale of hard work, tears, success, and living for your dream. Her impressive resume includes representing the US in the World Breeding Championships for Young Dressage Horses in Verden, earning multiple top honors in the National Young Horse and Developing Horse programs, finishing as a World Cup Finalist, making the long list for the World Equestrian Games, and earning FEI High Point at the Winter Equestrian Festival in Wellington. She was also a reality TV star as a contestant on "Dressage Idol."

Seminar Schedule & Speakers

- 11:30 – 1:00 **Impulsion:** Registration, shopping, silent auction opens
1:00 – 1:40 **Collection:** Welcome & JJ Tate presents "R U Engaged?"
Learn the importance of staying focused and engaged.
- 1:40 – 2:00 **More Impulsion:** Break, shopping, silent auction
2:00 -- 3:00 **Session A: Choose one topic**
_ **Rhythm:** Ballroom dancing with Tempo Dance Studio
Learn to dance the classics. Bring your dancing shoes!
_ **Contact:** Karate & Self-Defense Techniques with Bonnie Friscino
Hands-on session. Wear comfortable clothing.
- 3:00 – 3:15 **More Impulsion:** Break, shopping, silent auction
3:15 – 4:15 **Session B: Choose one topic**
_ **Straightness:** JJ Tate presents "For the Greater Good"
Learn how to develop the self-confidence to do the right thing for your horse and the sport.
_ **Suppleness:** Yoga session with Bliss Flow Yoga
Experience the benefits yoga can have on your riding.
- 4:15 – 4:30 **More Impulsion:** Break, shopping, silent auction
4:30 – 5:30 **Keynote:** JJ Tate presents "Do You Have the Courage to Follow Your Dreams?"
Hear how this small town Wisconsin girl is working to make her mark on dressage.
- 5:30 -- 6:30 **Still more Impulsion:** Riding Wear Fashion Show, Silent Auction, Shopping, Cash Bar
6:30 – 7:30 Dinner
7:30 – 8:30 Awards presentations, silent auction winners

Hotel Information: **Holiday Inn Hotel & Suites Madison West** ([Click for Driving Directions](#))

Hotel features indoor water park, arcade, game room, gym and is located near West Towne Mall and Greenway Station for your shopping pleasure. Ask for the \$99 WDCTA special rate for a standard room with a king bed or two queen beds. Call 608-826-0500 for reservations by January 20 to guarantee special rate. Visit www.wiscohoteles.com for more details. Presenter bios and directions to hotel on www.wdcta.org.

Questions: Contact Mary Hanneman – 608-455-1037 or mahanneman@gmail.com

ANNUAL MEETING REGISTRATION FORM

(Please fill out one form per person)

WDCTA presents: **Thinking Outside the Training Scale**

A Day of Learning, Awards Banquet, Silent Auction & Shopping

Featuring **Jessica Jo Tate**

Saturday, February 19, 2011

at Holiday Inn & Suites West, Madison, WI

Yes, sign me up to attend:

Seminars, JJ Tate Welcome & Keynote: *Select one topic from Session A and one topic from Session B.*
\$35 - WDCTA Member; \$45 - Non-member; \$20 - Jr/Young Rider WDCTA member (age 21 & under)

Session A: Ballroom Dancing Karate/Self-Defense
Session B: Yoga "For the Greater Good" presented by JJ Tate

Awards Banquet: *Choose one meal.*

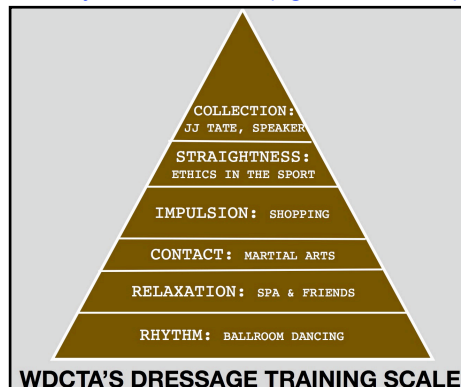
- \$40 - includes hors'd oeuvres and dessert
- Salmon -- Baked and topped with pesto sauce
- Ribeye - 10 oz steak grilled & topped with bourbon sautéed mushrooms
- Portabella Ravioli - mushroom stuffed ravioli cooked in sun-dried tomato pesto cream sauce

Package Deal: Seminars **PLUS** JJ Tate Welcome & Keynote **PLUS** Awards Banquet
\$70 - WDCTA Member; \$85 - Non-member; \$55 - Youth WDCTA member or Pony Club member (age 21 & under)

Payment: Make checks payable to WDCTA

JJ Tate Welcome & Keynote and Seminars **Only** \$ _____
Awards Banquet **Only** \$ _____
Package Deal \$ _____
Late Fee (after 2/4/11) \$ _____

Total Enclosed: \$ _____
Sorry, no refunds. Add \$10 late fee after 2/4/11.



Name _____

Address _____

City/State/Zip _____

Phone _____ Email _____

Send this form with check (payable to WDCTA) postmarked by **Friday, February 4, 2011** to:
Anne Zaharius, W4769 9.5 Rd, Menominee, MI 49858-9633

Questions about registration? Contact Anne at anne.zaharias@yahoo.com or 906-864-2790

WDCTA Southwest Chapter proudly presents:

A Judge's Perspective on the 2011 National Dressage Tests: Feedback for Training and Showing

Featuring: Maryal Barnett, FEI "C" and USEF "S" Dressage judge

March 19th, 2011, 1-4 PM

Alicia Ashman Library
733 North High Point Road
Madison, WI

The new USEF Introductory through Fourth level national tests have hit the presses! What do those changes mean for those entering at "A"? Maryal will share ways you can use the more detailed directive ideas and the judge's feedback to improve your scores in the ring, as well as guide your at-home training plan. Even if it's not in your plans to show this summer, this program is still for you (as well as your trainer and/or coach), to help guide your training and goals for improving dressage with your equine partner. Program will include video and commentary.



Maryal Barnett is an FEI "C" Dressage Judge, USEF "S" Dressage Judge and Canadian Equestrian Federation Senior Dressage Judge. She is a passionate educator serving as faculty for the USDF "L" Education program and subsequent "r" and "R" Dressage Judge Training programs, as well as the USDF Instructor Certification program. She has chaired the USDF University committee and currently serves on the Executive Board of the Dressage Foundation. Maryal has earned numerous regional and national awards as a competitor, and her students continue to gain recognition as respected competitors, instructors and judges.

To Register, please provide the following information:

Name: _____ email address: _____

Program Fees:

WDCTA-SW Chapter members \$15 _____

WDCTA member \$20 _____

Non-WDCTA member \$25 _____

Includes coffee/water/soda and snacks.

Program Fee Enclosed \$ _____

Make checks payable to: WDCTA Southwest Chapter

Mail to: Pamela Doolittle, 6486 Breunig Road, Mazomanie WI, 53560

Questions? 608-712-1400 or psdoolittle@yahoo.com

WDCTA-SW Chapter 2011 Dressage Clinics with Maryal Barnett

at Hidden Pond Farm, 6486 Breunig Road, Mazomanie WI 53560

- March 18 - 20** - opening date Feb. 4*
 June 17 - 19 - opening date May 6
 October 14 - 16 - opening date Sept. 2
 December 9 - 11 - opening date Oct. 28

*Note that Maryal Barnett will be presenting the SW Chapter March program Saturday March 19th, 1-4 PM, resulting in no Saturday afternoon rides! See the WDCTA calendar for details www.wdcta.org

Separate application required for each clinic!

Maryal is an accomplished rider and judge, and has competed at the Grand Prix level as well as serving as an [Fédération Equestre Internationale](#) (FEI) "C" Dressage Judge, and [USA Equestrian](#) (USAE) "S" Dressage Judge. She is a USDF L Faculty member and certified instructor examiner, and has held numerous board positions both with the USDF, ASHA and USEF. Highly regarded for her ability to connect with and teach students at all levels, her philosophy and methods are always positive and encouraging.

All rider applications must be postmarked on or after the "opening date" (see above). Riders will be selected on a first come basis with preference given to WDCTA-SW chapter members, followed by WDCTA members from other chapters. Refunds will be considered at organizer's discretion with receipt of veterinarian and/or doctor's certificate. Alternates will have first chance at open slots. Tentative Schedule: Friday 3:00 PM – 7:00 PM, Saturday 8:00 AM – 4:30 PM, Sunday 8:00 AM– 1:30PM.

Rider Name: _____ Address: _____

City: _____ State: _____ Zip: _____ Phone _____

Email: _____

Horse's Name: _____ Breed: _____

Age: _____ Schooling Level _____ Showing Level _____

RIDER FEES: For 2 rides (choose either Friday/Saturday or Saturday/Sunday lessons)

- WDCTA Member \$270 (\$135/ride)
 Non-WDCTA: \$320 (\$160/ride)

Ride time preference? AM PM (will try to accommodate) _____

Lesson day preference? Fri/Sat Sat/Sun Fri/Sun

Will you need a stall? Overnight** For day** Just in and out (no fee)

**Organizer will contact you with details regarding leaving your horse.

****Negative Coggins required with application****

AUDITOR FEES:

WDCTA-SW Chapter members – NO CHARGE!!

WDCTA member 1 day @ \$15 _____ 2 days @ \$25 _____

Non-WDCTA member 1day @ \$20 _____ 2 days @ \$30 _____

Attending: Saturday Sunday

Includes coffee/water/soda and snacks. Bring your own lunch and chair!

Rider / Auditor Fee \$ _____

TOTAL ENCLOSED \$ _____

Make checks payable to: WDCTA Southwest Chapter

Mail to organizer with check & 2011 Coggins:

Pamela Doolittle, 6486 Breunig Road, Mazomanie WI, 53560

608-712-1400 or psdoolittle@yahoo.com

Questions?

WDCTA-SW 2011 Dressage Janet Foy Clinics

at Judd's Green Meadows Farm, 6412 County A, Belleville, WI 53508



- April 8-10** – opening day Feb 25 **July 29-31** – opening day June 17
 May 6-8 - opening day March 25 **Sept 30 – October 2** – opening day August 19
 June 24-26 - opening day May 13 **October 21-23** -- opening day September 9

Separate application required for each clinic!

Janet Foy is an "I" rated FEI judge, USEF "S" and Sport Horse Breeding judge. She has judged US and international FEI shows, including the NAYR Champs, Dressage at Devon, & USA World Cup League. She is a USDF L Faculty member and instructs Federation Judges. She is a USDF bronze, silver and gold medalist, having ridden horses to Horse of the Year Awards from Training to Grand Prix. Janet was a member of the USDF test writing committee, making her uniquely qualified to provide her students with insights to accurate test riding.

All rider applications must be **postmarked** on the "opening day" (see above). Riders will be selected on a first come basis with preference given to WDCTA-SW chapter members, followed by WDCTA members from other chapters. Refunds will be considered at organizer's discretion with receipt of veterinarian and/or doctor's certificate. Alternates will have first chance at open slots. *Tentative Schedule: Friday - Sunday 8:00 AM– 4:30PM.*

Rider Name: _____ Address: _____

City: _____ State: _____ Zip: _____ Phone _____

Email: _____

Horse's Name: _____ Breed: _____

Age: _____ Schooling Level _____ Showing Level _____

RIDER FEES:

WDCTA Member: \$125/ride or \$65 for 3 Non-WDCTA Member: \$140/ride or \$420 for 3

TRAILER IN FEE: \$10/ride or \$25 for 3 (everyone pays except Judd boarders)

Ride time preference? AM PM (will try to accommodate) _____

Will you need a stall? Overnight ** For day** Just in and out

**VERY limited availability & additional cost – organizer will contact you with options

Negative Coggins required with application (if you board at Judd's, don't send.) All shots must be current.

AUDITOR FEES:

WDCTA-SW Chapter members – NO CHARGE!!

WDCTA member	1 day @ \$15 _____	2 days @ \$25 _____	3 days @ \$30 _____
Non-WDCTA member	1 day @ \$20 _____	2 days @ \$30 _____	3 days @ \$35 _____

Attending: Friday Saturday Sunday

Includes coffee/water/soda and snacks. Bring your own lunch and chair!

Rider / Auditor Fee \$ _____

Trailer in Fee \$ _____

TOTAL ENCLOSED \$ _____

Make checks payable to: WDCTA Southwest Chapter

Mail to organizer with check & 2011 Coggins:

Mary Hanneman, N8160 Smith Rd, Brooklyn, WI 53521

608-712-0975 or mahanneman@gmail.com

Questions?

Yoo-hoo! Need funding support?

We've got it.

Donors have opened their hearts and pocketbooks to make it possible for The Dressage Foundation to award \$240,000 in grants and scholarships during 2011, a record amount. Our Board has approved this funding support. The money is already in the bank, in Donor-designated Funds, ready to give away!

How can you apply for it?

Gallop to our website, www.dressagefoundation.org, click on "Funds and Programs," scroll through the list. You will find funding help for riders at all levels, instructors, judges – from grass roots to high performance, from Pony Club to Century Club!

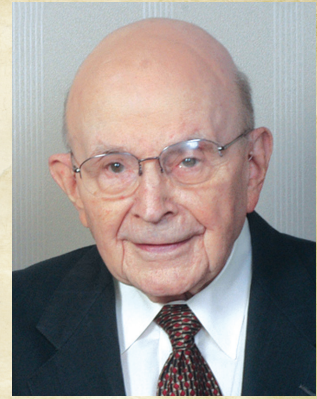
You will find descriptions of these grants, scholarships and programs, application information and instructions, and for your planning, application deadlines and award dates. If you need more information, or help navigating our website, contact Jenny Johnson by phone, 402-434-8585, by fax, 402-436-3053, email, jenny@dressagefoundation.org or regular mail 1314 'O' Street, Suite 305, Lincoln, NE 68508.



We raise money, manage it, and give it away.

THE DRESSAGE FOUNDATION
1314 'O' Street, Suite 305 / Lincoln, NE 68508 / 402-434-8585
info@dressagefoundation.org / www.dressagefoundation.org

Donations of all sizes are greatly appreciated!



100th birthday coming up for Lowell Boomer in 2011.

Lowell is the founding organizer of USDF in 1973, and the creator of The Dressage Foundation in 1989. Lowell Boomer's vision has produced two premier Dressage organizations, structured and operating as separate entities, one focused on education, the other on funding. Lowell has left a rich legacy for you and our sport.

P.S. Thanks to the publisher for making this page available to us, to guide you to the financial help that is available from The Dressage Foundation.

Stable, Instructor, Breeder and Business Listing Form

For only \$10 per category or \$35 for all four, you can have your stable, instructor, breeder or business listing appear in the eQuesta newsletter and on the WDCTA website. This advertising is for WDCTA members only. Must be a WDCTA member to be listed.

(Please limit your information to 35 words per category.)

CHECK ALL THAT APPLY: STABLE INSTRUCTOR BREEDER BUSINESS

MEMBER NAME: _____ PHONE: _____

STABLE/BUSINESS NAME: _____ EMAIL: _____

ADDRESS: _____

STABLE FACILITY FEATURES: (OUTDOOR/INDOOR ARENA, TURNOUT, LOUNGE, WASH STALL, TRAILS, LESSONS AVAILABLE)

BREEDER INFORMATION: (STANDING STALLIONS, BLOODLINES, BREEDS, ETC.)

BUSINESS INFORMATION: (TYPE OF BUSINESS, DAYS OPEN, HOURS, LOCATION, ETC.)

INSTRUCTOR INFORMATION: (COMPLETE BELOW)

EQUESTRIAN EDUCATION BACKGROUND: (DO NOT INCLUDE NAMES UNLESS PROVIDING WRITTEN PROOF OF PERMISSION)

YEARS OF TEACHING EXPERIENCE: _____

LEVELS WILL TEACH: _____

LEVEL OF RIDING EXPERIENCE: _____

SCHOOL HORSES AVAILABLE: YES _____ NO _____

WILL TRAVEL: YES _____ NO _____

REFERENCES AVAILABLE UPON REQUEST: YES _____ NO _____

AWARDS EARNED: _____

ADDITIONAL INFORMATION: _____

*Only WDCTA members can be listed.
One name per instructor listing.*

WISCONSIN
DRESSAGE
&
CT
ASSOCIATION, INC.

**COMPLETE FORM AND
SEND PAYMENT TO:**

Diane Brault
5184 Co. Rd. HH
Barneveld, WI 53507
608-455-1037
membership@wdcta.org

WISCONSIN DRESSAGE & COMBINED TRAINING ASSOCIATION 2011 MEMBERSHIP APPLICATION

MEMBERSHIP TERM: December 1 – November 30



___ RENEWAL ___ NEW

Mark box if changed

Name **NAME** _____

FARM _____

Address **ADDRESS** _____

CITY/STATE _____

Phone **ZIP CODE** _____ **PHONE** _____

Email **EMAIL** _____

Would you like to receive other horse-related mailings that are not affiliated with WDCTA? YES NO

DISCIPLINES:

- Dressage
- Eventing
- Breeder
- OTHER

RIDER STATUS:

- Professional
- Adult Amateur
- Young Rider (*age 18-21)
- Junior Rider (*age 17 or less)

* Age as of January 1

CHAPTER AFFILIATION:

- Southwest** (Madison and surrounding area)
- Upper Peninsula** (Upper Michigan)
- Central** (Green Bay and surrounding area)
- Eastern** (North Milwaukee, Sheboygan, FDL)
- Northern** (Stevens Point and northern area)
- Kettle Moraine** (Southwest Milwaukee area)

MEMBERSHIP CLASSIFICATION AND FEES

- \$160 BUSINESS Membership** – Includes one USDF Group membership; emailed newsletter; one voting privilege; recognition & business card ad in *Equester*, listing & logo on WDCTA website. Also, INCLUDES Stable, Instructor, Breeder & Business listings (chose one or all four) in both *Equester* & website. Businesses joining after June 1 pay reduced fee of \$125. **Must** provide a business card for *Equester* ad and fill out form for listings of choice.
- \$60 FAMILY Membership** - Includes one USDF group membership ; emailed newsletter; one voting privilege. USDF requires that an additional USDF membership be purchased for each additional family member. Add \$10 for each additional family member.
 - \$10** Add'l family member name _____ Birth date if age 21 or less _____
 - \$10** Add'l family member name _____ Birth date if age 21 or less _____
- \$48 INDIVIDUAL Membership** (Age 18 & over) . Includes one USDF group membership; emailed newsletter; one voting privilege.
- \$35 JUNIOR Membership -- Birth date** _____ (must be age 17 or less as of January 1st)
Includes one USDF group membership; emailed newsletter; one voting privilege.
- \$25 SUBSCRIBING Member** – Out of State residents only. Includes emailed newsletter only. No voting or awards privileges.
- \$38 JUNE MEMBERSHIP -- NEW members** only joining after June 1st. Includes USDF group membership **if rec'd by Aug 15**.
- \$10 HARD COPY NEWSLETTER** – Any member requiring a mailed hardcopy newsletter, please add \$10 to membership fees.

As a member of WDCTA, I may choose to volunteer for Association responsibilities or activities. I expressly agree that my services are being provided as a volunteer and that I am not an employee of the Wisconsin Dressage & Combined Training Association. I am neither entitled to nor expect any present or future salary, wages, or other benefits for these volunteer services.

Applicant Signature _____ **Date** _____

WDCTA STABLE, INSTRUCTOR, BREEDER, BUSINESS LISTINGS -- Listings on website & *Equester*. **Must** fill out listing form available on WDCTA website and include payment.

- \$10 Stable listing \$10 Instructor listing \$10 Breeder listing \$10 Business listing \$35 for all four listings

Make check payable to WDCTA & mail to Diane Brault, 5184 County Road HH, Barneveld, WI 53507
membership@wdcta.org or 608-924-1808

Date Received _____	Check # _____	Amount \$ _____
---------------------	---------------	-----------------