

EQUESTER

A monthly publication of the Wisconsin Dressage & Combined Training Association

President's Message

Back to the Future

Pam Doolittle

Earlier this month, a friend shared an article titled, "Why Horses are Good for Little Girls." (View article [here](#).) I take mild exception to the title, since I believe horses teach good lessons to all children, male and female, and continue to teach us lessons throughout our lifetime. While the article showcases horses as the primary lesson-givers, the facilitators of those lessons are often the local riding instructor.

Students need teachers. I had great teachers as I grew up learning about horses, although they at first weren't professional instructors. I began riding in the early '70's through a Girl Scout group organized out of Saint Anthony parish in Menomonee Falls, WI. We learned to groom and tack up the horses. We rode nose-to-tail in the arena, mostly walking. We were taught 2-point position and posting. The first time I cantered, I was ponied by an experienced rider. I can still remember how thrilled I was!

I continued weekly group lessons closer to home at the practice center for the Milwaukee Polo Club, Joy Farm. I'm sorry to say I don't remember the names of some of the instructors, but I do remember Charlie, the farm help who lived in an apartment over the school lounge. Charlie wasn't really my first riding instructor, but I do consider him my first teacher when it came to horsemanship. After what I'm sure was relentless pestering, Charlie finally agreed to let me help him groom and ready horses for their day. I learned important lessons from Charlie about keeping a stable, looking for cuts and swelling, reading body language, and most of all, just how generous yet unpredictable horses can be. Charlie was there the first time I got



One of the first boarding facilities Pam received riding lessons at was Joy Farm.

bucked off a horse. After checking that I was alright, he brushed off my jeans and lifted me right back into the saddle.

We moved in 1976 closer to Sussex, WI. I was lucky again to find horses in the backyard of a friendly farmer down the road, Carl Goetz, my second teacher. Mr. Goetz emigrated from Germany shortly after WWII. While he was officially a dairy farmer, he loved riding and horses, and always had one around to enjoy. Given all the interest in reining in Europe today, it makes me smile remembering he rode in an old western saddle and did some roping as a hobby. No doubt I was relentless once again in gaining access to the horses, but he was very kind to first let me groom and eventually ride his horses. For several years he would only let me ride bareback, insisting that I learn perfect balance before depending on the stirrups for support. Believe me, there's no better way to learn an independent seat than by riding bareback for a few years!

As my interests became more focused, I sought out more specialized instruction. I found a great teacher and mentor in Jayne Ayers of Hearthstone Farm in Dousman in the early '80s, already recognized as a successful competitor and dressage judge. Jayne was my first dressage instructor.

Through Jayne, I was introduced to the concept of clinics and youth groups focused on good horsemanship like [Pony Club](#). Through those clinics and activities, I met Colonel Von Ziegner. The Colonel took me on as a working student for a year, where I lived in a little apartment near the Reitschule Mechttersen, and I worked very much like Charlie did—grooming, tacking up and cleaning the barn—until I earned a spot teaching beginner lessons in the school. We didn't pony folks for their first canter. This was done on a lunge line, usually during a vaulting lesson, but the gleeful giggling often accompanying the result was very much the same for them as it was for me a decade before.

The local riding instructor is often the difference between whether a person will continue to grow with horses or leave the sport altogether. They teach the beginner respect for the size and nature of horses, and also how to gain the respect and trust of their equine partner. They catch the hearts of their students as they fly out of their chests after a fall or a scary spook. They encourage students to laugh through their tears. They celebrate the successes and encourage improvement and growth. And when the time is right, they help their students make the necessary connections to grow in a positive direction in sport.

Continued on next page

President's Column...continued

Local riding instructors teach students a foundation of horsemanship, which serves as a touchstone for years to come no matter the discipline, be it dressage, hunters or reining.

Good teachers recognize the need to remain, themselves, students. My guess is most of our local instructors will share that finding professional development opportunities for improving their skills as teachers are pretty hard to come by. This year, the WDCTA board of directors is exploring ways our organization can both highlight the good work of our Wisconsin instructors, as well as bring in professional development opportunities to help them continue growing as teachers and dressage professionals. Our Eastern Chapter is organizing a "Day of Dressage" October 8. Wisconsin instructors, L Education Program graduates and other equine professionals will gather to share their interests, thoughts and wishes during this fun and interactive day. Other chapters are working to put on similar activities, where dressage and horse enthusiasts can meet local instructors to learn more about local opportunities and offerings.

At her May clinic, Janet Foy shared with the Southwest Chapter group that Wisconsin is on the brink of becoming a great area for competitive dressage. Wisconsin has good horses, and the training and development of the horses

has largely improved since she first started teaching here more than eight years ago. Foy believes bringing USDF educational events to Wisconsin is the key to taking the sport in Wisconsin to the next level. Such programs work to develop our instructors and aspiring professionals, who can then pass on their knowledge to the future generation of equestrians.

Our State BOD supports the concept of organizing a full series of the [L Education Program](#). We've also discussed over the last two years organizing the [Instructor Certification Program](#). In order to realize ANY of these events, we need your help! Members, please communicate with me (president@wdcta.org) or your chapter presidents about what programs you would be interested in auditing or participating in. And if you're inspired, share what time and talents you can lend to support their success. We need help from serving on the general organizing committee, to chapter coordinators in charge of putting on the specific sessions, to volunteers who can spare a day to direct traffic, manage registration and help with food and set up/tear down. Volunteers in general can audit these events for free or at a reduced cost, and remember, your good work can make a real difference in the lessons you or a loved one might learn down the road.

Together, we can make a real difference in the lives of both students and teachers, as well as the future of dressage in Wisconsin.

WISCONSIN
DRESSAGE
& CT
ASSOCIATION, INC.

WDCTA Members are
Group Members
of the
United States Dressage
Federation
**WDCTA is Wisconsin's
oldest and largest GMO**

Editor

Caryn Vesperman
(608) 455-2208
newsletter@wdcta.org
W1619 King Road
Brooklyn, WI 53521

All advertisements, articles and photographs (with photo release) should be submitted electronically to the editor by the **15th of the month**, with payment for advertisements postmarked no later than the 15th. Ads and calendar of events submissions will appear in both the **eQuarter** and on the website.

Advertising rates and requirements are under Forms on www.wdcta.org.



Charter
GROUP
MEMBER
ORGANIZATION

30 Years Ago: The [Run of the Mill Pony Club](#) group poses with clinician, Kurd Albrecht von Ziegner (front row, third from left), after a week of dressage and jumping instruction near Dousman, WI. Pony Clubbers not only learn to ride, but learn horsemanship, leadership and self-confidence that lasts a lifetime. Also pictured is then 18-year-old Pam Doolittle (bottom row, far right) and WDCTA member and instructor, Katie Joyce (bottom row, fourth from left), who now owns Rosebury Farm.

BITS 'N PIECES

NEWS ABOUT MEMBERS, NEWS TO HELP MEMBERS



The new WDCTA website has been unveiled! Above is a screen capture of the home page. Check it out at www.wdcta.org

Introducing....the new and improved WDCTA website!

WDCTA unveiled its new website a few days ago. Leading the development was Stephanie Severn, WDCTA webmaster.

Stephanie worked closely with Heather McManamy of ShortHorse Studios and Anna Goebel of Freestyle Graphic Design to create the new website. In addition to its new look, the website has been designed to have more intuitive navigation and banner advertising. More features will be added in Phase 2 of the redesign.

With the launch of the new website, we're offering a special introductory price for anyone purchasing a banner ad in 2011. The price will increase in 2012. The special introductory rate for 2011 is:

- \$400 non-WDCTA members and \$360 members - 12 months
- \$200 non-WDCTA members and \$180 members - 6 months

Banner ads will be linked to your business website. If you are a business member, you are already entitled to a banner ad with your membership. Interested in banner advertising? Then send us the files: Banners must be 180x150 pixels and can be a .jpg, .gif, or .png. Email the image to: website@wdcta.org.

If you have any questions about the new website, contact Stephanie at (608) 213-8925 or website@wdcta.org. And...let us know what you think of our new website!

MEMBERS: Send in your chapter, farm, training or personal news for this column by the 15th of each month to newsletter@wdcta.org.

WDCTA State Board

President

Pam Doolittle (608) 644-9423
president@wdcta.org

Vice President

Martha Flury (262) 723-2656
vp@wdcta.org

Secretary

Sue Genin (608) 882-6580
secretary@wdcta.org

Treasurer

Angela Genin (608) 516-2293
498 Cledell Street #3
Oregon, WI 53575
treasurer@wdcta.org

Historian

Anne Zaharias (906) 864-2790
historian@wdcta.org

Video Librarian

Donna Thomas (608) 835-8549
librarian@wdcta.org

Members-at-Large

Stephanie Severn (608) 213-8925
mal1@wdcta.org

Chet Thomas (608)835-8549
mal3@wdcta.org

Open

mal2@wdcta.org

Membership Recorder

Diane Brault (608) 924-1808
5184 County Road HH
Barneveld, WI 53507
membership@wdcta.org

Awards Recorder

Send forms to:
Rita Pulz
5593 Bellbrook Road
Brooklyn, WI 53521
awards@wdcta.org

Kettle Moraine President

Martha Flury (262) 723-2656
km@wdcta.org

Southwest Chapter President

Donna Thomas (608) 835-8549
sw@wdcta.org

SW Chapter Representative

Pam Doolittle (608) 644-9423
president@wdcta.org

Upper Peninsula President

Karin Steffens (906) 346-6497
up@wdcta.org

Editor

Caryn Vesperman (608) 455-2208
W1619 King Road
Brooklyn, WI 53521
newsletter@wdcta.org

Webmaster

Stephanie Severn (608) 213-8925
website@wdcta.org

In Memory of Martha Flury

We remember a life well loved and fully lived.

On Saturday morning, June 18, Martha Flury, our dear friend, WDCTA state board member, Kettle Moraine chapter president, and tireless cheerleader and friend of WDCTA, passed away after valiantly fighting cancer for the last year.

The WDCTA state board is deeply saddened that Martha lost her battle to cancer, and we'd like to share a few words of remembrance and memories of Martha with our entire membership.

Martha's obituary noted that she loved horses. Our interactions with Martha on the WDCTA state board showed us how Martha was also deeply committed to education for equestrians--helping people develop better riding skills and acquire information that would enrich their relationships with their equine partners.

Pam Doolittle, WDCTA state president, spoke to Martha in early June, the day before she was gearing up for another round of chemotherapy and radiation, targeting the cancer growing in her lungs.

"She sounded great, and was working toward the goal of being well enough to attend the Kettle Moraine chapter schooling show in August," says Pam. "She loved our club, horses the principles of dressage--those were the things that helped her focus forward. She remained committed to her role as Kettle Moraine president, skypping in for our

state board meetings even in her last few months, and providing feedback on our bylaws discussion. I feel honored to have known such a dedicated, positive and principled individual. I will miss her."

Karin Steffens, UP Chapter President, agrees about Martha's unwavering commitment to WDCTA when she says, "Our chapter members would like to extend our condolences to Martha's family and friends. She dedicated herself to WDCTA

"In the end these things matter most: How well did you love? How fully did you live? How deeply did you learn to let go?"

- Buddha



until the end of her life. She was a long-time board member who was actively involved in WDCTA affairs. We are thankful for all she did for our organization."

"What I remember most about Martha was her smile, determination and principles," says Caryn Vesperman, *eQuester* newsletter editor. "When ethics and behavior were at stake, she simply stated, that wasn't right, and here's what we're going to do. Then she'd smile and dig in to organize our next steps. Her enthusiasm and determination really helped keep us motivated when, at times, it would have been easier to just go home and ride our horses. Because *she* cared, we cared."

Stephanie Severn, WDCTA webmaster, says, "I am very sad to hear of Martha's passing. She was wonderful to work next to on the state board, very inspiring and motivating. She always brought a lot of energy."

All the state board members agreed Martha's determination and dedication was impressive and humbling to them.

"At a time when many seriously ill people withdraw from outside involvement to focus on themselves, Martha instead maintained her work with and commitment to WDCTA," says Chet Thomas, WDCTA member-at-large. "She was such a determined, strong lady--both in her desire to beat her illness, and in her dedication to both a sport and the horses that she loved."

Concludes Donna Thomas, WDCTA librarian and Southwest chapter president, "Through her commitment to educational programs for equestrians, Martha really went to bat for our organization at a difficult time in its history. In so doing, she helped ensure the continuation of WDCTA, for the betterment of the sport of dressage in this region. She's a real hero in our eyes for her efforts in that regard."

Martha, we are all better for knowing you.

Quite a Score!



Photo by Keegan O'Brien

Shelly Day and her horse, H. Titus (pictured above), received an outstanding score of 81% on their musical freestyle at the Silverwood Show June 10-12. Congratulations!

Send
in your
announcements, stories
and/or photos from clinics,
shows and other events. This is
YOUR newsletter and we want to
hear your news! Send to
newsletter@wdcta.org.



KPWN, Oldenburg, and TB sporthorses for sale including yearlings, 2yos, training level horses and broodmares. Visit our website for current pictures, updated videos and more information.
www.WrenwoodStables.com
210-508-1112

Savannah HF—4yo RPSI mare by Sempatico M. Gorgeous uphill mover, sweet and very easy to handle. Stands 16.1H, should mature 16.2-16.3H. Nicely started under saddle! \$18,500.
www.hopefulfarm.com
608-213-8925



Accolade HF—3yo premium Oldenburg (GOV) gelding by Abke—Coriander-Le Champion. Big, sweet gelding with super movement and he can jump! This sweet boy has a puppy-dog personality. \$15,000
www.hopefulfarm.com
608-213-8925



Midwest Breeders Group

All the horses here are offered by members of Midwest Breeders Group. For horse sales, stallion, and membership information, visit us on the web at BreedersGroup.com or call 608-213-8925

WDCTA Business Members

Support your WDCTA
business members.
Buy local!

[Day Dressage](#)
Shelly Day

[Excalibur Insurance](#)
Tom Mikulice

[Hickory Grove Farm](#)
Andrea Schten

[Lindinhof Equine Sports Zentrum](#)
Megann Mclsaac

[Midwest English Tack](#)
Kim Amini

[OTS Sunrise Farm](#)
Wilma Prins

[Pen Bryn Farm, LLC](#)
Valerie Ahl

[Silverwood Farm](#)
Lisa Froehlig

[Stonegate Equestrian Center](#)
Hazelhurts, WI

[Sunflower Farms](#)
Bristol, WI

MIDWEST ENGLISH TACK

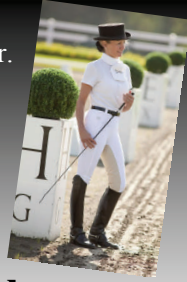


Equestrian products, supplies, and apparel for the discriminating English Rider

Pikeur - FITS - Herm Sprenger - Gersemi - Stubben - Passier - Horseware - Kentucky - Fleck - Irideon - Rectiligne - Cavallo - Red Barn - Walhausen - Kerrits - Amerigo - Eurofit - Mattes - Thinline - Charles Owen - Equilibrium



HWY 59 & 83
W309S4837 COMMERCIAL Dr.
GENESEE DEPOT, WI 53127
Phone: (262) 968-9088



www.midwestenglishtack.com

*Visit us at our store or
stop by when you see us at shows!*



YOUR AD HERE!

Check out the ad costs under Forms on the WDCTA [website](http://www.wdcta.org).

Horses For Sale

Accolade HF— 3yo Premium Oldenburg Verband gelding by Abke—Coriander. Bred to jump but he's an incredible mover for dressage. Sweet boy, very easy to handle. Ready to start this summer. Should mature 17—17.2H. A steal at \$15,000! →



Lorelei—3yo RPSI Gold Premium mare by Redwine (Rotspon - Matcho AA). She was the Champion filly and the highest scoring foal of her inspection. Very sweet, very easy to handle. Lovely dressage or hunter prospect. ← \$15,000

Savannah HF—Beautiful 4yo mare by Sempatico M. Gorgeous mover with three very good gaits, beautiful color. Nicely under saddle, soft and easy, trailers, cross ties, clips, bathes. Get noticed in the show ring with her movement and color! → \$18,500



Stephanie Severn, Hopeful Farm Sport Horses
McFarland Wisconsin
608.213.8925 · www.hopefulfarm.com
info@hopefulfarm.com

2011 WDCTA Chapter Officers

Eastern

President - [Tara Ragatz](#) (414) 331-4775
Vice President - [Paula Rush](#) (414) 870-1320
Secretary - OPEN
Treasurer - [Jennifer Callies](#) (262) 339-4775

Kettle Moraine

President - [Martha Flury](#) (262) 723-2656
Vice President - Nancy Lightfield
Treasurer - [Joann Williams](#) (414) 378-2231
Secretary - [Kathy Weishampel](#) (262) 719-8438

Southwest

President - [Donna Thomas](#) (608) 835-8549
Vice President - [Sue Genin](#) (608) 882-6580
Treasurer - [DeAnn Howard](#) (608) 882-4196
Secretary - [Caryn Vesperman](#) (608) 455-2208
Representative - [Pam Doolittle](#) (608) 644-9423
Alt. Representative - [Stephanie Severn](#) (608) 835-1820

Upper Peninsula

President - [Karin Steffens](#) (906) 346-6497
Vice President - [Anne Zaharias](#) (906) 864-2790
Treasurer - [Tracee Horn](#) (920) 346-3624
Secretary - [Judi Izzi](#) (906) 384-6955

CALLENDAR

*A listing in the Calendar of Events is a service provided to WDCTA members only.
Send your submissions to newsletter@wdcta.org by the 15th of each month.*

WDCTA State & Chapter Meetings

Tuesday Aug 16

WDCTA State Board Meeting - 7 p.m.
Alicia Ashman library, 733 N. High Point Rd, Middleton
Plus Skype

Tuesday, September 13

Southwest Chapter - 6:30 p.m.
Topic and location TBA

Tuesday, October 11

Southwest Chapter - 6:30 p.m.
2012 chapter officer elections
Other topic and location TBA

Tuesday, November 8

Southwest Chapter - 6:30 p.m.
2012 chapter officer elections
Culvers, Madison (beltline and Fish Hatchery)

Saturday November 12

WDCTA State Board Meeting - 11:30 a.m.
Culvers, 900 Kelly Ave., Waupun, plus Skype

Saturday, December 10 (tentative)

Southwest Chapter - 1 p.m.
Death by Chocolate holiday party
Date and location TBA

Saturday February 25, 2012

WDCTA State Board Meeting - 10 a.m.
At the WDCTA annual conference
Location - TBA

WDCTA Clinics & Events

Sept. 30-Oct. 2, 2011

Janet Foy Clinic
Judd's Green Meadows Farm, Belleville, WI
Contact: Mary Hanneman (608) 712-0975 or
mahanneman@gmail.com

Oct. 15-16, 2011

Maryl Barnett Clinic
Hidden Pond Farm, Mazomanie, WI (near Madison)
Contact: Pam Doolittle (608) 644-9423
psdoolittle@yahoo.com

Oct. 21-23, 2011

Janet Foy Clinic
Judd's Green Meadows Farm, Belleville, WI
Contact: Mary Hanneman (608) 712-0975 or
mahanneman@gmail.com

Nov. 19-20

Steffen Peters and Janet Foy: Through the Levels
Symposium
Sponsored by Southwest Chapter
Location: Sunflower Farms, Bristol, WI
Contact: Mary Hanneman at (608) 455-1037
mahanneman@gmail.com

Dec. 10-11, 2011

Maryl Barnett Clinic
Hidden Pond Farm, Mazomanie, WI (near Madison)
Contact: Pam Doolittle (608) 644-9423
psdoolittle@yahoo.com

Feb. 26, 2011 (tentative, depending upon speaker availability)

WDCTA Annual Conference & Awards Banquet
Save the date! More info to come.
Contact: Pam Doolittle (608) 644-9423
psdoolittle@yahoo.com

Shows

Remember, only USDF/USEF recognized shows or schooling shows designated as WDCTA-recognized are eligible for WDCTA year-end awards.

July 8-9

Sorensen Schooling Show
Joan Leuck-Waak, "L" candidate
East Troy, WI
Intro - 2nd Level, and freestyle
Contact: Reid Sorensen
262-642-4111
sorensenparkllc@aol.com
WDCTA recognized

July 9

FETS Benefit Dressage
Schooling Show I
David Schmutz "S" and TBA
Wisconsin Equestrian Center
De Pere, WI
Intro thru Grand Prix, with Para-Equestrian and musical freestyle
Contact: Deborah Heier
(920) 819-2891
DEBLMEYE@aol.com
WDCTA recognized

July 10

FETS Benefit Dressage
Schooling Show II
David Schmutz "S" and TBA
Wisconsin Equestrian Center
De Pere, WI
Intro thru Grand Prix, with Para-Equestrian and musical freestyle
Contact: Deborah Heier
(920) 819-2891
DEBLMEYE@aol.com
WDCTA recognized

July 9-10

Silverwood Dressage & Sport Horse In Hand
Camp Lake, WI
USEF/USDF recognized
Contact: Lisa Cannata 847-235-6410
dressage@silverwoodfarm.net
www.silverwoodfarm.net

July 16

Kettle Moraine Schooling Show
Caryn Vesperman, L candidate
Sorensen Park, East Troy, WI
Contact: Alice Antczak
262-642-4178
aantczak@centurytel.net
WDCTA recognized except gaited and classes above 2nd level

July 16

Heritage Stables
Mini event, combined test, and dressage show
Oconomowoc, WI
Contact: www.jlssporhorses.com
262-313-8926

Continued on next page

COPYRIGHT © 2011 WDCTA

July 24

Dressage & CT Schooling Show
Sunflower Farm
Bristol, WI
Contact: Phil May 262-857-8555

July 30-31

Silverwood Dressage
Camp Lake, WI
USEF/USDF recognized
Contact: Lisa Cannata
847-235-6410
dressage@silverwoodfarm.net
www.silverwoodfarm.net

July 30-31

Heartland Stables Schooling
Show, Custer, WI
Intro and up: Saturday judge:
Marie Johnson "R" and
Sunday judge: Tracey Dikkers, L"
Contact Name: Betty Foss
715-592-4171 or 715-340-7159
bettyfoss@heartlandstables.com
*WDCTA recognized on Sunday and
only classes from Intro - 2nd Level*

July 31

Golden Oaks Leaf Dressage
Schooling Show
Nicole Trapp, "L" candidate
Tomah, WI
Intro - 2nd Level
Contact: Jessica Kortbein
608-387-0293
americ@centurytel.net
WDCTA recognized

Aug. 6-7

Silverwood Farm Summer
Horse Trials, USEA recognized
Camp Lake, WI
Starter-Beginner Novice, Novice
Training Levels
Contact: Lisa Cannata
847-235-6410
eventing@silverwoodfarm.net
www.silverwoodfarm.net

Aug. 7

Hooper Riding Club Dressage and
CT Schooling Show
Hooper Equestrian Center,
Belleville, WI
Contact: Jamie Lapin,
jalapin@gmail.com

Aug. 13

Golden Horseshoe Dressage
Schooling Show
Monroe, WI
Judge: Caryn Vesperman, L
candidate
Intro - Second Level
Contact: Angela Rabe
414-617-6022
www.goldenhorseshoedressage.com

Aug. 13

Dressage at WEC Schooling
Show
Judges: Anne Cizadlo "R" and
others
Wisconsin Equestrian Center,
DePere, WI
Intro - 4th Level, musical freestyle
Contact: Deborah Heier
(920) 819-2891
DEBLMEYE@aol.com
WDCTA recognized

Aug. 13-14

Silverwood Dressage & Sport
Horse In Hand
Camp Lake, WI
USEF/USDF recognized
Contact: Lisa Cannata
847-235-6410
dressage@silverwoodfarm.net
www.silverwoodfarm.net

Aug. 19 & Aug. 20-21

Silverwood Dressage - 2 Shows!
Camp Lake, WI
USEF/USDF recognized
Contact: Lisa Cannata
847-235-6410
dressage@silverwoodfarm.net
www.silverwoodfarm.net

Aug. 20

Sorensen Schooling Show
Trish Joaquin, "L" candidate
East Troy, WI
Intro - 2nd Level, and freestyle
Contact: Reid Sorensen
262-642-4111
sorensenparkllc@aol.com
WDCTA recognized

Aug. 26-29

Summers End "A" Hunter Jumper
Show
Silverwood Farm
Camp Lake, WI
Contact: Kate Gerald
847-224-3854

Aug. 27

Kettle Moraine Schooling Show
Sorensen Park, East Troy, WI
Judge: Nicole Trapp, L candidate
Contact: Alice Antczack
262-642-4178
aantczak@centurytel.net
*WDCTA recognized except gaited
and classes above 2nd level*

Aug. 27

Dressage & CT Schooling Show
Sunflower Farm
Bristol, WI
Contact: Phil May 262-857-8555

Sept. 3-4

Silverwood Farm Fall Horse Trials
Camp Lake, WI
Starter-Beginner Novice, Novice
Training Levels - USEA recog.
Contact: Lisa Cannata
847-235-6410
eventing@silverwoodfarm.net
www.silverwoodfarm.net

Sept. 3-4

Silverwood Dressage
Camp Lake, WI
USEF/USDF recognized
Contact: Lisa Cannata
847-235-6410
dressage@silverwoodfarm.net
www.silverwoodfarm.net

Sept. 11

Dressage & CT Schooling Show
Sunflower Farm
Bristol, WI
Contact: Phil May 262-857-8555

Sept. 17

Silverwood Dressage & In Hand
Qualifier/Finals
Camp Lake, WI
USEF/USDF recognized
Contact: Lisa Cannata
847-235-6410
dressage@silverwoodfarm.net
www.silverwoodfarm.net

Sept. 17

Sorensen Schooling Show
Tracy Dikkers, "L" candidate
East Troy, WI
Intro - 2nd Level, and freestyle
Contact: Reid Sorensen
262-642-4111
sorensenparkllc@aol.com
WDCTA recognized

Sept. 24

IDCTA Dressage & CT Schooling
Show -- Last Qualifier for
Schooling Show Championship
Silverwood Farm
Camp Lake, WI
Contact: Lisa Cannata
847-235-6410
dressage@silverwoodfarm.net
www.silverwoodfarm.net

Oct. 1

Sorensen Schooling Show
Linda Sorensen, "L" candidate
East Troy, WI
Intro - 2nd Level, and freestyle
Contact: Reid Sorensen
262-642-4111
sorensenparkllc@aol.com
WDCTA recognized

Oct. 1-2

Silverwood Dressage
Camp Lake, WI
USEF/USDF recognized
Contact: Lisa Cannata
847-235-6410
dressage@silverwoodfarm.net
www.silverwoodfarm.net

Oct. 15-16

Silverwood Dressage &
Championship
Camp Lake, WI
USEF/USDF recognized
Contact: Lisa Cannata
847-235-6410
dressage@silverwoodfarm.net
www.silverwoodfarm.net

November 12-13

USEF/USDF Dressage Show
(indoors) #327908
Fields & Fences, Gurnee, IL
60031
Contact Anita Schadeck
847-244-4121 or
www.fieldsandfences.com

Non-WDCTA Events

July 8-11

Clinic with Alex Gerding
Touchstone Farm, Brooklyn, WI
Contact: Caryn Vesperman
(608) 455-2208 or
touchstonefarm@gmail.com

July 22-24

Musical Freestyle Dressage Clinic
with Melanie Michalak
Hooper Equestrian Center,
Belleville, WI
Contact: Tracy Becker
tracybecker78@gmail.com

Aug. 5-7

Clinic with Gerd Zuther
Touchstone Farm, Brooklyn, WI
Contact: Caryn Vesperman
(608) 455-2208 or
touchstonefarm@gmail.com

Aug. 19-22

Clinic with Alex Gerding
Touchstone Farm, Brooklyn, WI
Contact: Caryn Vesperman
(608) 455-2208 or
touchstonefarm@gmail.com

Sept. 23-26

Clinic with Alex Gerding
Touchstone Farm, Brooklyn, WI
Contact: Caryn Vesperman
(608) 455-2208 or
touchstonefarm@gmail.com

Nov. 4-6

Clinic with Gerd Zuther
Touchstone Farm, Brooklyn, WI
Contact: Caryn Vesperman
(608) 455-2208 or
touchstonefarm@gmail.com

Dec. 2-5

Clinic with Alex Gerding
Touchstone Farm, Brooklyn, WI
Contact: Caryn Vesperman
(608) 455-2208 or
touchstonefarm@gmail.com

MarketPlace



Breeders helping breeders since 1999

Midwest Breeders Group

4595 Mahoney Rd. McFarland, WI 53558

midwestbreedersgroup@gmail.com

www.breedersgroup.com

608-213-8925



ANDREA SHTEN

DRESSAGE INSTRUCTION & TRAINING

BARREAU FARM LLC.

W349S10131 BITTERSWEET CT, EAGLE, WI 53119,

MAIL: PO Box 316, MUKWONAGO, WI 53149-0316

CELL: (262)470-4557 • ASCHTEN@HOTMAIL.COM

WEB: WWW.ANDREASCHTEN.COM

SportHorseProspects.com



Specializing in World Class Bloodlines

Pen Bryn Farm, LLC, Madison, Wisconsin

Owner: Valerie Ahl, Ph.D.

Sales Manager: Fiona Wilby

Phone: 608.698.7924

Email: Fiona@Wilby.com

Val@SportHorseProspects.com

Find your next Dressage/Eventing/Jumping partner horse here!!



Megan McIsaac
President

LINDINHOF EQUINE SPORTS
Zentrum

DRESSAGE TRAINING • SALES • LESSONS
All Levels - F.E.I.

4246 Schneider Dr. • Oregon, WI 53575

(608) 445-8531

lindinhof1@aol.com

www.lindinhof.com

www.nodoubtmcisaac.com

SUNFLOWER FARMS

* PRIVATE *

Full Facility Horse Care Center

19000 128th St.

Bristol, WI 53104

Phil May

Main 262-857-8555

Fax 262-857-3505

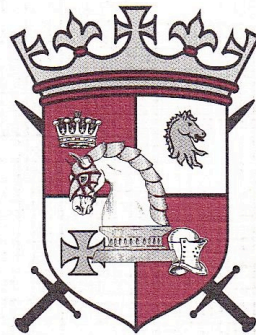
Cell 262-620-4846

reinsman@aol.com

Phil@SunflowerFarms.com

SUNFLOWER FARMS

EXCALIBUR
INSURANCE AGENCY



Equine Insurance

MORTALITY • FARMOWNERS • LIABILITY

Thomas C. Mikulice

800-617-2450

www.excaliburinsurance.com

Local: 262-367-2450 • Fax: 262-367-4250

P.O. Box 500 • Hartland, WI 53029

Day
DRESSAGE



SHELLEY L. DAY

Lessons Training

Will Travel

414.403.8491

www.daydressage.com

sdayerdressage04@yahoo.com

Stable - Instructor - Breeder - Business Listings

Listings provided as a service and are not an endorsement of any member or facility listed. Must be a WDCTA member to be included.

Stable Listings

BITTERSWEET FARM LL

Jennifer Kraemer
344 Ct. Rd. FF
Picket, WI 54964
920-589-2709

bittersweetfarm@ntd.net

Clean, well-lite, ventilated 12 x 12' stalls w/mats. hot/cold water, heated tack room, lounge, 70 x 140' indoor w/ mirrors, excellent footing, jumps, small XC field and 20 x 60 m grass outdoor.

BLUE RIBBON BOARDING, LLC

Penny Oneson-DoBas
W3842 Sunset Road
Plymouth, WI 53073
920-207-7077

izhe01@gmail.com

70x200 indoor arena. 12x12 matted stalls. Exceptional care and feeding program. Daily turnout in appropriate herd group or individual paddock. Lessons available.

DUNDEE TRAINING STABLE

Tracy Dikkers
N6482 Silver Road
Monticello WI 53570
608-938-2410

dundee@tds.net

Small private facility, indoor and outdoor. Lessons available.

EQUESTRIAN ENDEAVORS

Erinn Bieber
N4845 Highline Road
Bonduel, WI 54107
715-460-0532

erchelstrom@gmail.com

60 x 200' indoor with mirrors, standard outdoor dressage ring, large pasture turnout or small paddock (individual or small group), wash stall w/ hot and cold water, dressage and jumping instructors at facility and hosts dressage and jumping clinics.

GOLDEN OAK LEAF DRESSAGE

Jessica Kortbeing
27459 Holland Avenue
Tomah, WI 54660
608-387-0293

americ@centurytel.net

GOLDEN HORSESHOE FARM

Angela Rabe
N4609 Hwy. 59
Monroe, WI 53566
414-617-6022

jedinight55@yahoo.com

75 x 175' sand outdoor arena, large round pen, large pastures, individual turnout. Lessons, school horses available. Will travel.

GRAND PRIX FARM

Jackie Luebke-Puetz
15034 Hwy. X
Kiel, WI 53042
920-693-3367

cvestor@aol.com

66 x 150' indoor arena w/ mirrors, viewing lounge, h/c wash rack, matted stalls, cleaned daily, 4X/day feedings, screened facility -- no bugs, heated bathroom, hunt course, outside dressage ring, lesson horse available.

HEARTHSTONE FARM INC

Jayne Ayers
W381 S5225 Hwy. ZC
Dousman WI 53118
262-965-2066

www.dressagehorse.com

60 acres, daily turn-out, heated indoor arena, trails on property, retiree board available.

HERITAGE STABLE

Jennifer Strauss
812 N. Griffith Road
Oconomowoc, WI 53066
262-313-892

www.jlssportshorses.com

heritagestables812@msn.com

60 x 120' mirrored indoor w/ new sand/future track footing, new standard-size outdoor arena, 8+ hours of turnout daily -- weather permitting, heated lounge, miles of trails, xc course -- 2' preliminary height fences, river/creek for water therapy and conditioning, dressage/jumping lessons available.

HICKORY KNOLL FARM

Betsy Freiburger
5438 Hwy. M
Fitchburg, WI 53575
608-835-7473

frei@chorus.net

Indoor and outdoor arena, turnout, heated lounge, wash stall, trails and lessons.

HOPEFUL FARM SPORT HORSES

Stephanie Severn
4595 Mahoney Road
McFarland, WI 53558
608-213-8925

hopefulfarm@gmail.com

Small, private facility on 41 acres, 12 x 14' matted stalls, 80 x 175' outdoor arena w/ solid footing and Triple Crown 3-rail fencing. Daily turnout in appropriate herd group. Over a mile of excellent trails surrounding the pastures. Buckeye feed available.

LINDINHOFF EQUINE SPORTS ZENTRUM

Megan McIsaac
4246 Schneider Drive
Oregon, WI 53575
608-445-8531

Lindinhof1@aol.com

Indoor with mirrors and 80 x 200 sand outdoor. Individual and group turnout. Wash stall. Num-erous trails. Solarium. Lessons and monthly training available.

PARADIGM FARM

Shelly Reichart
N5834 Co. Rd. S
Lake Mills, WI 53551
414-881-1830

paradigmfarmllc@aol.com

Very private, 12-stall facility with beautiful, heated 60 x 180' indoor arena, 75 x 210' outdoor arena, daily private or group turnout, indoor and outdoor wash racks. Heated stable area, tack rooms, full bathroom and lounge. Training and lessons available from Shelly Reichart.

PEN BRYN FARM, LLC

Valerie Ahl
4321 State Road 138
Oregon, WI 53575
608-698-7924

val@sporthorseprospects.com

Full-service facility, individualized care. 76' x 126' indoor arena w/ mirrors, a 100' x 200' outdoor arena w/ dressage arena, trails, jumps, cross-country obstacles.

PRATT STABLE

Paula Pratt
8434 Central Sands Road
Bancroft, WI 54921
715-335-4130

prattfarm@hotmail.com

Boarding, lesson, breeding, training facility. 70 x 140' indoor w/ rubber footing, mirrors. Three full outdoor arenas, two round pens, jumps, trails. Heated tack rooms, lounge and wash rack. Matted stalls, daily turnout, cleaning. Dressage clinics, lessons and lesson horses.

SENTINEL FARM

Anne Zaharias
W4769 Million Dollar Road
Menominee, WI 49858
906-864-2790

sentinelfarm@mari.net

70 x 150 indoor, 100 x 200 outdoor. D-level XC course, 12 x 12' matted stalls, heated lounge, hot water wash rack, private paddocks or group pasture turnout.

SILVERWOOD FARM

Lisa Froehlig
P.O. Box 192
Camp Lake, WI 53109
262-889-4700

promopony@aol.com

Heated barn, 7 outdoor arenas, 80 x 160' mirrored indoor arena, wash stalls, large wood-fenced pastures, rehab turnouts, 100 acres with XC courses, four FEI trainers.

SUNFLOWER FARM

19000 - 128th Street
Bristol, WI 53104
262-857-8555

reinsman@aol.com

7 heated barns, 3 indoor heated arenas, 3 outdoor dressage rings, 24-hr. security, 170 acres.

Continued on next page

Instructor Listings

JAYNE AYERS

Hearthstone Farm Inc.
W381 S5225 Hwy. ZC
Dousman, WI 53118
262-965-2066
www.dressagehorse.com
 Have produced many horses and riders who are national award winners. Specialize in teaching rider seat and aids, as well as using FEI judging skills to coach for competitions. Ridden thru G.P.; many USDF Horse of the Year awards, long-listed U.S. equestrian team. 40 years teaching experience, beginner thru G.P. Will travel. School horses available.

ERINN BIEBER

Equestrian Endeavors
N4845 Highline Road
Bonduel, WI 54107
715-460-0532
erchelstrom@gmail.com
 Shown and trained through I-1 and earned USDF Bronze and Silver medals. Will teach all levels. School horses available. Will travel for lessons and available for clinics. Will trailer and travel to shows.

SHELLEY DAY

1324 S. 124th
West Allis, WI 53214
414-403-8491
sdaydressage04@yahoo.com
 USDF Bronze & Silver Medalist,; USDF award winner; completed through I1 on self-trained horse. Have 25 years teaching & training experience. Will travel in Wi & IL. School horses available. Reference available upon request.

KIMBERLY DEATON-IWEN

Wisconsin Equestrian Center
2486 Old Martin Rd.
DePere, WI 54115
920-737-4936
giwen@new.rr.com
 Training, instruction, clinics offered. USDF Gold, Silver, Bronze medalist. Several national awards including USDF Horse of the Year on self-trained horses. USET developing list. Enjoy working with all breeds, ages and levels of riders. Have trained with many European trainers over past 30 years. Trailer-in lessons available.

TRACEY DIKKERS

Dundee Training Stable
N6482 Silver Road
Monticello, WI 53570
608-938-2410
dundee@tds.net
 USDF Bronze and Silver Medalist. "L" graduate w/ distinction. Trained and shown through PSG. Will travel in Madison area.

LISA FROELIG

Silverwood Farm
P.O. Box 192
Camp Lake, WI 53109
262-889-4700
promopony@aol.com
 20 years teaching experience, will teach Intro thru G.P. 30 years riding experience – USDF Bronze, Silver and Gold Medals. Will do some travel.

AMANDA JOHNSON

6680 W. River Pointe Drive
Franklin, WI 53132
319-331-3241
ajohnsonborchardt@gmail.com
 15 years training experience; USDF Bronze, Silver, Gold medals; multiple USDF year-end awards, won CDI competitions, coached students to their USDF Bronze and Silver medals. Will teach beginner thru Grand Prix. Trained and shown Training level to Grand Prix, plus FEI Young Horse. Will travel.

TRACY KISSEL

Serenity Farm
2803 Old Park Road
Sheboygan, WI 53081
920-918-3685
920-457-5353
 USDF Bronze medalist. 30+ years teaching experience from Training through PSG. Shown through 4th. Continue training w/ many European trainers. Year-end awards with USDF, WDCTA, AQHA. Associates Degree in Equine Management. Travel for clinics. References available.

BITTERSWEET FARM LLC

344 Ct. Rd. FF
Pickett, WI 54964
920-589-2709
bittersweetfarm@ntd.net
 Classical dressage (Training thru 3rd), basic ground work. Experienced through 3rd level, USDF qualified rider, Perofmrnace Horse awards, judge 4-H shows, invovled with USPC, does clinics and will travel.

JACKIE LUEBKE-PUETZ

Grand Prix Farm
15034 Hwy. X
Kiel, WI 53042
920-693-3367
cvestor@aol.com
 Ridden for 25+ years, trained with 4 Olympic riders, attend USDF convention, won WDCTA awards and Region 2 schooling awards, as have students. USDF Adult Program Region 2 chair.

MEGAN MC ISAAC

Lindinhof Equine Sports Zentrum
4246 Schneider Drive
Oregon, WI 53575
608-445-8531
Lindinhof1@aol.com
 FEI trainer. USDF Gold, Silver and Bronze medals and Freestyle Gold Bar. Competed successfully at Dressage at Devon in 2007. Multiple year-end award winner. Coached students to year-end awards, regional championships and their USDF medals. Will travel to give clinics. 10 years teaching experience, beginners thru GP. Grand Prix school horses available.

PEN BRYN FARM, LLC

4321 State Road 138
Oregon, WI 53575
608-698-7924
val@sporthorseprospects.com
 Several on-site instructors willing to work with all ages, toddlers through 4th level dressage. School horses available. Instructors will do some travel and have references.

SHELLY REICHART

Paradigm Farm
N5834 Co. Rd. S
Lake Mills, WI 53551
414-881-1830
paradigmfarmllc@aol.com
 15 years of teaching experience, trained and shown through Grand Prix. USDF Gold, Silver and Bronze Medalist -- all earned on self-trained horses. Based out of Paradigm Farm, but will also travel for lessons/clinics.

ANDREA SCHTEN

Hickory Grove Farm
W336 S8510 County Road E
Mukwonago, WI 53149
262-470-4557
aschten@hotmail.com
 USDF Bronze and Silver Medalist. Regional championships - Training thru I-1 on self-trained horses. Accepting approved horses in training. Specialize in assisting amateurs move up the levels.

NICOLE TRAPP

1207 White Sands Court
West Bend, WI 53090
920-960-6930
trappnl@hotmail.com
 Completed thru 2nd Level, trained thru 4th. Evented thru Training. 15+ years teaching experience. Audited USDF Instructor Certification program. Passed USDF "L" Judge program w/ distinction. USDF regional/HOY breed awards. Lesson/ training programs to fit any budget. Will travel. School horses. Will start young horses.
KATE VAN SICKLEN
Silver Spring Farm
3031 Timber Lane
Verona, WI 53593
608-845-6630
katevsh@tds.net
 British Horse Society Instructor. USDF "L" Program graduate with distinction. USDF Associate Instructor. USDF medalist, shown thru Prix St. George. 30+ years teaching experience. Will teach thru 4th Level. Specialize in teaching all riders and horses the correct basics. Will travel for lessons.

JOANN WILLIAMS

Cambridge Farm
W3580 Scotch Bush Rd
Elkhorn, WI 53121
414-378-2231
jwcambridge18@yahoo.com
 Offering classical dressage for every horse and rider. USDF Gold medallist on self-trained horse. Many students have Silver and Bronze. Multiple USDF regional winner. Travels for lessons/clinics.

ANNE ZAHARIAS

Sentinel Farm
W4769 Million Dollar Rd
Menominee, WI 49858
906-864-2790
sentinfarm@mari.net
 USDF Bronze Medallist. Completed USDF Instructor Certification courses. USDF and Breed Championship titles at Regional, National and World levels. Experience with a variety of breeds. Will travel off site.

Continued on next page

Breeder Listings

VALERIE AHL
 Pen Bryn Farm, LLC
 4321 State Road 138
 Oregon, WI 53575
 608-698-7924
val@sporthorseprospects.com

Specializing in breeding world-class bloodlines including Lingham, Rotspan, Londonderry, Weltmeyer and Winterprinz.

TRACEY DIKKERS
 Dundee Training Stable
 N6482 Silver Road
 Monticello, WI 53570
 (608) 938-2410
dundee@tds.net

Warmblood/warmblood crosses, young stock usually available.

SHANNON E. LANGER
 Maple Run Farm LLC
 W3465 Market Road
 Helenville, WI 53137
 (920) 674-6344
maplerunfarm@yahoo.com

Hanoverians of exceptional quality. Bloodlines include Ampere, Bordeaux, DeNiro, Diamond Hit, Rohdiamant, Royal Prince, Sir Donnerhall, Sinatra Song, Fidertanz, Pablo, Winterprinz and Weltmeyer.

JACKIE LUEBKE-PUETZ
 Grand Prix Farm
 15034 Hwy. X
 Kiel, WI 53042
 920-693-3367
cvestor@aol.com

Too Cute To Shoot, Welsh Section B, multiple breed championships, WI State Horse Council Championships winner, bay, Farley bloodlines.

STEPHANIE SEVERN
 HOPEFUL FARM SPORT HORSES
 4595 Mahoney Road
 McFarland, WI 53558
 (608) 213-8925
hopefulfarm@gmail.com

Breeders of quality German Oldenburg, Westfalen, RPSI and Dutch Warmblood sport horses since 1993. Horses for sale.

Business Listings

RETAIL BUSINESSES

COMPETITIVE EDGE BODYWORK
 Nicki Butler
 9 Wakeman Street
 Madison, WI 53705
 608-358-2589
findawayfarm@yahoo.com

Competitive Edge equine body work: massage, Reiki, myofascial release, ESMT certified -- Keys to mutually enjoyable riding sessions with your relaxed, supple, symmetrically moving horse. 30 years experience with all breeds and levels.

EXCALIBUR INSURANCE AGENCY
 800-617-2450
info@excaliburinsurance.com

Equine insurance - mortality insurance, farm owners insurance, instructors and trainers liability insurance.

SHORTHORSE STUDIOS
 Heather K. McManamy
 2421 West Hill Drive
 Fitchburg, WI 53711
 608-886-3764

heather@shorthorsestudios.com
 ShortHorse Studios is a photography company providing images beyond imagination of equines, pets and people. For more info, please visit www.shorthorsestudios.com.

SPORT HORSE MARKETPLACE
 Anna Goebel
 4826 South Hill Drive
 Madison, WI 53705
 608-232-2922
 608-232-2922
sporthorsemarketplace.com

Quarterly sport horse magazine specializing in sport horses and ponies for sale, stallion and breeder services, and all goods and services for sport horse enthusiasts, and The Sporthorse Directory: annual stallion directory.

TRAINING, STABLES & SHOW FACILITIES

BITTERSWEET FARM LLC
 Jennifer Kraemer
 344 Ct. Rd. FF
 Picket, WI 54964
 920-589-2709
bittersweetfarm@ntd.net
www.bittersweetfarm.us

Family-owned boarding facility available for clinics and day schooling shows.

SHELLEY DAY
 1324 S. 124th
 West Allis, WI 53214
 414-403-8491
sdaydressage04@yahoo.com

USDF Bronze & Silver Medalist;; USDF award winner; completed through I1 on self-trained horse. Have 25 years teaching & training experience. Will travel in WI & IL. School horses available.

GOLDEN HORSESHOE FARM
 Angela Rabe
 N4609 Hwy. 59
 Monroe, WI 53566
 414-617-6022
jednight55@yahoo.com

Dressage lessons, school horses available. Training, boarding. Quality horses for sale, Friesian sport horses, clinics.

HICKORY GROVE FARM
 Andrea Schten
 W336 S8510 County Road E
 Mukwonago, WI 53149
 262-470-4557
aschten@hotmail.com

USDF Bronze and Silver Medalist. Regional championships - Training thru I-1 on self-trained horses. Accepting approved horses in training. Specialize in assisting amateurs move up the levels.

LINDINHOF EQUINE SPORTS ZENTRUM
 Megan McIsaac
 4246 Schneider Drive
 Oregon, WI 53575
 608-445-8531
Lindinhof1@aol.com

Lessons, sales and training. Tuesday thru Sunday. Open for lessons noon to 6 p.m.

PEN BRYN FARM, LLC
 Valerie Ahl
 4321 State Road 138
 Oregon, WI 53575
 608-698-7924
val@sporthorseprospects.com

Our combined breeding and boarding full-service facility offers one-on-one attention for you and your horse.

SILVERWOOD FARM & SHOW FACILITY
 Lisa Froehlig
 P.O. Box 192
 Camp Lake, WI 53109
 262-889-4700

www.silverwoodfarm.net
 Boarding, rehab, retirement, dressage training and instruction. Host to multiple USEF-USDF-recognized dressage shows. Open 7 days a week, 6 a.m. to 10 p.m. Located 45 minutes south of Milwaukee and 1 hour north of Chicago.

SUNFLOWER FARM !
 19000 - 128th Street
 Bristol, WI 53104
 262-857-8555
reinsman@aol.com

7 heated barns, 3 indoor heated arenas, 3 outdoor dressage rings, 24-hr. security, 170 acres.

Golden Horseshoe Dressage

WDCTA-Recognized Schooling Show

August 13, 2011

N4609 Hwy. 59, Monroe, WI 53566

www.goldenhorseshoedressage.com

Show Coordinators:

Angela Rabe (414) 617-6022

Jamie Zimmerman (608) 228-0622

Judge: Caryn Vesperman (L)

Entries Close August 1, 2011—No Refunds After Closing Date

Negative Coggins Test Required (Photocopy with Entry) * Bring Original Copy Day of Show

USEF Rules, Not Sanctioned by USDF or USEF (Scores do not count for year-end awards)

Scores Eligible for WDCTA Year-end Awards

ASTM Helmets Required For All Riders

Classes:

- | | |
|---------------------------|--------------------------|
| 1.) Intro Test A | 8.) Dressage Equitation |
| 2.) Intro Test B | 9.) First Level Test 1 |
| 3.) Intro Test C | 10.) First Level Test 2 |
| 4.) Training Level Test 1 | 11.) First Level Test 3 |
| 5.) Training Level Test 2 | 12.) Second Level Test 1 |
| 6.) Training Level Test 3 | 13.) Second Level Test 2 |
| 7.) Dressage Suitability | 14.) Second Level Test 3 |

Fees:

Office Fee - \$10.00

Class Fee (each) - \$20.00

Entry Form: (One form per horse)

Class Description- Be Sure To Specify Class # and Level:

Class # _____ Level _____ @ \$20.00

Class # _____ Level _____ @ \$20.00

Class # _____ Level _____ @ \$20.00

Office Fee @ \$10.00

TOTAL: \$ _____

NOTE:

No stalls are available at this show, so your horse must be comfortable tied to or staying in your trailer.

Horse's Name: _____ Breed: _____ Height: _____ Color: _____ Sex: _____ Age: _____

Rider/Handler _____ Email address _____

Street _____ City _____ State _____ Zip _____

Daytime Telephone _____ Home Telephone _____

Horseowner's Name _____ Daytime Telephone _____ Home Telephone _____

Street _____ City _____ State _____ Zip _____

Registration Signature _____

Please type or print! You must enclose:

- 1) Check/money order for all fees, payable to: **Angela Rabe**.
- 2) A photocopy of current Coggins test for each horse. *Bring original to show.*
- 3) Mail entries to: Golden Horseshoe Dressage, N4609 Hwy. 59, Monroe, WI 53566

**** ENTRIES MUST INCLUDE ALL FEES AND WAIVER MUST BE SIGNED/SUBMITTED AT THE SHOW ****

Questions: Angela Rabe at (414) 617-6022 or Jamie Zimmerman at (608) 228-0622

Grass Roots Dressage Show

July 16, 2011, 8:00 a.m.

Sorensen Equestrian Park (www.sorensenpark.com)
1700 St. Peters Road, East Troy, WI 53120 • (262)642-4111

Ride Times: Call/E-mail Alice Antczak, July 14 (262) 642-4178, aantczak@centurytell.net

Judge: Caryn Vesperman (L)

Ribbons and High Point Award

Entries Close July 2, 2011 or When 45-Ride Slots Fill

Enter Early, Don't be Disappointed—45-Ride Limit—First Come, First Served

Late Entries Accepted Only If Ride Times Available

Negative Coggins Test Required (Photocopy with Entry) Bring Original Copy Day of Show

USEF Rules, Not Sanctioned by USDF or USEF (Scores Do Not Count For Year End Awards)

Scores Eligible for WDCTA and the Sorensen Schooling Show Program

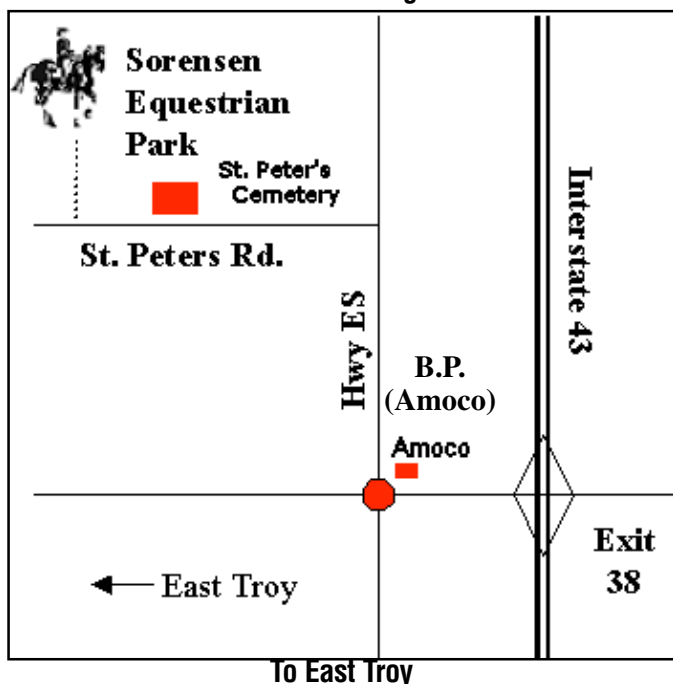
Show Attire/Dressage Tack Not Required • **ASTM Helmets Required For All on Show Grounds When Mounted.**

Please include a separate check for \$20.00 (to WDCTA) which will be returned after you strip clean your stall.

Fees refunded—less \$40.00 stall rent—only with veterinarian's/doctor's certificate

Food Available on Grounds

To Mukwonago



Fees:

Stall (required—includes one bag of shavings) \$40.00

Horses may arrive Friday, July 15 after 1:00 p.m.

Tack stalls \$35.00

Office fee (one time show fee) \$10.00

Classes:

- 1 Intro test A (open) \$20.00
- 1G Intro test A (gaited horses) \$20.00
- 2 Intro test B (open) \$20.00
- 2G Intro test B (gaited horses) \$20.00
- 3 Intro test C (open) \$20.00
- 3G Intro test C (gaited horses) \$20.00
- 4 Dressage suitability w/t (open – min. 3 entries)* \$20.00
- 5 Walk/trot dressage equitation (open)* \$20.00
- 6 Training level test 1 (open) \$20.00
- 7 Training level test 1 (maiden)* \$20.00
- 7G Training level test 1 (gaited horses) \$20.00
- 8 Training level test 2 (open)* \$20.00
- 9 Training level test 3 (open)* \$20.00
- 10 First level test 1 (open)* \$20.00
- 11 First level test 1 (maiden)* \$20.00
- 12 First level test 2 (open)* \$20.00
- 13 First level test 3 (open)* \$20.00
- 14 Second level or above % ride (open)* \$20.00
- 15 Amateur handler (sporthorse-in-hand)* \$20.00
- 16 Musical freestyle (any level, any breed)* \$20.00

*These classes open to all breeds (gaited and non-gaited)

For information and/or an entry form call (262) 966-2067

Grass Roots Dressage Show

July 16, 2011

HORSE'S NAME	BREED	GAITED		HEIGHT	COLOR	SEX	AGE
		Yes	No				

CLASS NO.	CLASS DESCRIPTION – BE SURE TO SPECIFY LEVEL WHERE APPLICABLE	ENTRY FEES

<p style="text-align: center;">Please type or print! Use separate form for each horse.</p> <p><i>You must enclose:</i></p> <p>1) Check/money order, payable to: WDCTA Kettle Moraine Chapter for all fees.</p> <p>2) Separate check for \$20.00, payable to: WDCTA for stall cleaning. Returned when stall is stripped.</p> <p>3) A photocopy of current coggins test for each horse. <i>Bring original to show.</i></p> <p style="text-align: center;">***ALL ENTRIES MUST INCLUDE ALL FEES AND SIGNED WAIVER***</p> <p style="text-align: center;"><i>Fees refunded—less \$40.00 stall rent—only with veterinarian's/doctor's certificate.</i></p>	<table border="1" style="width: 100%; border-collapse: collapse;"> <tr><td style="padding: 2px;">Entries</td><td style="text-align: right; padding: 2px;">\$</td></tr> <tr><td style="padding: 2px;">Stall (required) includes 1 bag bedding</td><td style="text-align: right; padding: 2px;">\$ 40.00</td></tr> <tr><td style="padding: 2px;">Tack Stall (\$35.00)</td><td style="text-align: right; padding: 2px;">\$</td></tr> <tr><td style="padding: 2px;">Office Fee</td><td style="text-align: right; padding: 2px;">\$ 10.00</td></tr> <tr><td style="padding: 2px;"> </td><td style="padding: 2px;"> </td></tr> <tr><td style="text-align: right; padding: 2px;">TOTAL</td><td style="text-align: right; padding: 2px;">\$</td></tr> </table>	Entries	\$	Stall (required) includes 1 bag bedding	\$ 40.00	Tack Stall (\$35.00)	\$	Office Fee	\$ 10.00			TOTAL	\$
Entries	\$												
Stall (required) includes 1 bag bedding	\$ 40.00												
Tack Stall (\$35.00)	\$												
Office Fee	\$ 10.00												
TOTAL	\$												

Rider/Handler _____

Street _____

City _____ State _____ ZIP _____

Daytime Telephone _____ Home Telephone _____

E-Mail Address _____

Horse Owner _____

Street _____

City _____ State _____ ZIP _____

Daytime Telephone _____ Home Telephone _____

E-mail Address _____

Registration Signature _____

Please stable me with _____

Please mail entry form/fees to:
Alice Antczak
 N7258 County ES
 Elkhorn, Wisconsin 53121

Questions:
(262) 642-4178

Entries Close July 2, 2011
or
When 45-Rides Fill
First Come/First Served

**Wisconsin Dressage & Combined Training Association
Waiver, Release and Hold Harmless Agreement**

Please read the following statements and indicate your understanding and agreement to them by signing below:

I, the undersigned, understand and believe that the use, handling and riding of horses involves a risk of physical injury to any individual undertaking such activities. I further know that any horse, irrespective of its training, usual past behavior and characteristics, may act or react unpredictably at any time. With full awareness of the foregoing, I am knowingly participating in a horse show judged by Caryn Vesperman and sponsored by the Wisconsin Dressage and Combined Training Association (WDCTA) and I voluntarily engage in this activity. The possibility of injury is accepted as a risk inherent in work on and around horses.

I, the undersigned, understand that horseback riding is a rigorous activity, both physically and mentally demanding. I hereby represent that my horse and I have the requisite level of physical fitness and mental alertness to enable us to participate in the horse show for which this waiver is being obtained. Both my horse and I are in good health and free from injury, illness or other defects, which may impair our ability to engage in this activity.

I, the undersigned, also understand that riding in a show by its nature requires that the judge issue direction in the form of "commands", and I understand that, while due deference must be given to such commands, I must and will use my own judgment whenever the situation demands it. I understand that all activities engaged in as part of the instruction are entirely voluntary and that I may elect not to comply with any suggested act. The Judge is entitled to my attentiveness and good faith efforts to respond to his/her directives, but he/she neither is entitled to nor requests absolute obedience and it is expected that I will at all times be alert and thinking while on horseback.

I, the undersigned, understand that approved riding helmets are required when mounted for all riders.

I, the undersigned, expressly and voluntarily assume all risks attendant to horseback riding and related activities, including but not limited to those discussed in the foregoing paragraphs. I do hereby fully and forever release, discharge, and hold harmless Caryn Vesperman, WDCTA, its officers and members, Sorensen Equestrian Park, as well as all other participants of the horse show, and the assigns of same, from any and all claims which I, the undersigned, or my assigns, may assert as a result of physical injury to a horse or rider, or loss of property, that incurred while a participant using, handling, or riding a horse while a participant in the WDCTA Kettle Moraine Chapter Grass Roots Dressage Show. My signature on this form constitutes expression of my understanding and agreement to all that is stated above and my total and unconditional release of Caryn Vesperman, WDCTA, its officers and members, and other show participants.

In accordance with the Wisconsin Law relating to the limitation of civil liability regarding equine activities:

"NOTICE: A person who is engaged for compensation in the rental of equines or equine equipment or tack or in the instruction of a person in the riding or driving of an equine or in being a passenger upon an equine is not liable for the injury or death of a person involved in equine activities resulting from the inherent risks of equine activities, as defined in section 895.481(1)(e) of the Wisconsin Statutes."

Dated: _____ Signature of participant: _____

I, the undersigned, am one of the parents of the above-named minor participant (and/or the duly appointed legal guardian of such minor), and I have full authority to sign this waiver for and on behalf of the minor. My signature on this form constitutes expression of my understanding and consent to the total and unconditional waiver set out above.

Dated: _____
Signature of parent or legal guardian on behalf of minor participant

PLEASE PRINT:

Name of Participant _____ Telephone _____

Address _____ City/State/ZIP _____

Equester June 2011

WDCTA-SW 2011 Dressage Janet Foy Clinics

at Judd's Green Meadows Farm, 6412 County A, Belleville, WI 53508



Sept 30 – October 2 – opening day August 19
October 21-23 -- opening day September 9

Separate application required for each clinic!

Janet Foy is an "I" rated FEI judge, USEF "S" and Sport Horse Breeding judge. She has judged US and international FEI shows, including the NAYR Champs, Dressage at Devon, & USA World Cup League. She is a USDF L Faculty member and instructs Federation Judges. She is a USDF bronze, silver and gold medalist, having ridden horses to Horse of the Year Awards from Training to Grand Prix. Janet was a member of the USDF test writing committee, making her uniquely qualified to provide her students with insights to accurate test riding.

All rider applications must be **postmarked** on the "opening day" (see above). Riders will be selected on a first come basis with preference given to WDCTA-SW chapter members, followed by WDCTA members from other chapters. Refunds will be considered at organizer's discretion with receipt of veterinarian and/or doctor's certificate. Alternates will have first chance at open slots. *Tentative Schedule: Friday - Sunday 8:00 AM- 4:30PM.*

Rider Name: _____ Address: _____

City: _____ State: _____ Zip: _____ Phone _____

Email: _____

Horse's Name: _____ Breed: _____

Age: _____ Schooling Level _____ Showing Level _____

RIDER FEES:

WDCTA Member: \$125/ride or \$65 for 3 Non-WDCTA Member: \$140/ride or \$420 for 3

TRAILER IN FEE: \$10/ride or \$25 for 3 (everyone pays except Judd boarders)

Ride time preference? AM PM (will try to accommodate) _____

Will you need a stall? Overnight ** For day** Just in and out

**VERY limited availability & additional cost – organizer will contact you with options

Negative Coggins required with application (if you board at Judd's, don't send.) All shots must be current.

AUDITOR FEES:

WDCTA-SW Chapter members – NO CHARGE!!

WDCTA member	1 day @ \$15 _____	2 days @ \$25 _____	3 days @ \$30 _____
Non-WDCTA member	1 day @ \$20 _____	2 days @ \$30 _____	3 days @ \$35 _____

Attending: Friday Saturday Sunday

Includes coffee/water/soda and snacks. Bring your own lunch and chair!

Rider / Auditor Fee \$ _____

Trailer in Fee \$ _____

TOTAL ENCLOSED \$ _____

Make checks payable to: WDCTA Southwest Chapter

Mail to organizer with check & 2011 Coggins:

Mary Hanneman, N8160 Smith Rd, Brooklyn, WI 53521
608-712-0975 or mahanneman@gmail.com

Questions?

WDCTA-SW Chapter 2011 Dressage Clinics with Maryal Barnett
 at Hidden Pond Farm, 6486 Breunig Road, Mazomanie WI 53560

- October 14 - 16** - opening date Sept. 2 **December 9 - 11** - opening date Oct. 28

**Note that Maryal Barnett will be presenting the SW Chapter March program Saturday March 19th, 1-4 PM, resulting in no Saturday afternoon rides! See the WDCTA calendar for details www.wdcta.org*

Separate application required for each clinic!

Maryal is an accomplished rider and judge, and has competed at the Grand Prix level as well as serving as an [Fédération Equestre Internationale](#) (FEI) "C" Dressage Judge, and [USA Equestrian](#) (USAE) "S" Dressage Judge. She is a USDF L Faculty member and certified instructor examiner, and has held numerous board positions both with the USDF, ASHA and USEF. Highly regarded for her ability to connect with and teach students at all levels, her philosophy and methods are always positive and encouraging.

All rider applications must be postmarked on or after the "opening date" (see above). Riders will be selected on a first come basis with preference given to WDCTA-SW chapter members, followed by WDCTA members from other chapters. Refunds will be considered at organizer's discretion with receipt of veterinarian and/or doctor's certificate. Alternates will have first chance at open slots. Tentative Schedule: Friday 3:00 PM – 7:00 PM, Saturday 8:00 AM – 4:30 PM, Sunday 8:00 AM– 1:30PM.

Rider Name: _____ Address: _____

City: _____ State: _____ Zip: _____ Phone _____

Email: _____

Horse's Name: _____ Breed: _____

Age: _____ Schooling Level _____ Showing Level _____

RIDER FEES: For 2 rides (choose either Friday/Saturday or Saturday/Sunday lessons)

- WDCTA Member \$270 (\$135/ride) Non-WDCTA: \$320 (\$160/ride)

Ride time preference? AM PM (will try to accommodate) _____

Lesson day preference? Fri/Sat Sat/Sun Fri/Sun

Will you need a stall? Overnight** For day** Just in and out (no fee)

**Organizer will contact you with details regarding leaving your horse.

******Negative Coggins required with application******

AUDITOR FEES:

WDCTA-SW Chapter members – NO CHARGE!!

WDCTA member 1 day @ \$15 _____ 2 days @ \$25 _____

Non-WDCTA member 1day @ \$20 _____ 2 days @ \$30 _____

Attending: Saturday Sunday

Includes coffee/water/soda and snacks. Bring your own lunch and chair!

Rider / Auditor Fee \$ _____

TOTAL ENCLOSED \$ _____

Make checks payable to: WDCTA Southwest Chapter

Mail to organizer with check & 2011 Coggins:

Pamela Doolittle, 6486 Breunig Road, Mazomanie WI, 53560

608-712-1400 or psdoolittle@yahoo.com

Questions?

Steffen Peters

Returns to Wisconsin on Nov. 19 & 20 for

“Dressage Through The Levels”



*Olympian and
World Equestrian
Games Bronze
Medalist,
Steffen Peters*



**International
FEI judge,
Janet Foy**

Together, Steffen and Janet will work with more than 20 riders and their horses as they demonstrate moving up the dressage levels, from the basics at Training Level to Grand Prix — the level ridden at the Olympics.

Join us for a fun and educational weekend, plus shop ‘til you drop at the trade fair, at Sunflower Farms in Bristol, WI (www.sunflowerfarms.com).

For details, visit the WDCTA website at www.wdcta.org, call (608) 455-1037 or email mahanneman@gmail.com.

Auditor Registration (Complete and mail in this form * 1 person per form)
*Sorry, no refunds** *

Early Reservations (postmarked before 11/11/11)

WDCTA Member: \$100/2 days or \$60/1 day) - includes snacks and lunch

Non-WDCTA Member: \$150/2 days or \$85/1 day - includes snacks and lunch

Reservations (postmarked after Nov. 11 or at the door)

WDCTA Member: \$125/2 days or \$85/1 day - no lunch provided

Non-WDCTA Member: \$175/2 days or \$110 day - no lunch provided

Auditor Name _____ Phone _____
Address _____ Email _____
City _____ State _____ Zip _____

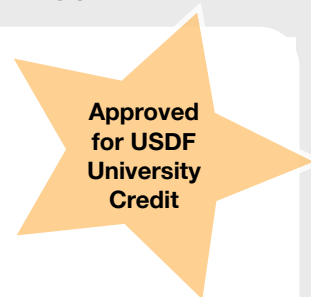
*Saturday Lunch: ___ Meat ___ Vegie *Sunday Lunch: ___ Meat ___ Vegie

FEES ENCLOSED: \$ _____ Attending one day, which day: ___ Sat. ___ Sun.

Mail form with check (made out to WDCTA-Southwest Chapter to:
Donna Thomas, 5996 Co. Rd. A, Brooklyn, WI 53521

Questions, contact Donna at 608-835-8549 or stablewoman@hughes.net

W-H-C Event organized by WDCTA's Southwest Chapter



WISCONSIN
DRESSAGE
& ET
ASSOCIATION, INC.