

OCTOBER 2011

# EQUESTER

A monthly publication of the Wisconsin Dressage & Combined Training Association

## President's Message

**More members, more help and more fun!**

**Pam Doolittle**

Membership Coordinator, Diane Brault, reported a few weeks ago that she has experienced a fairly large influx of new memberships in anticipation of the *Dressage Through the Levels* symposium in November.

I want to extend a special welcome to new and returning members, and point out that details of your membership benefits are spelled out on our [website](#). Please contact me if you have any questions or problems accessing any of these great benefits. WDCTA is here to serve as your educational partner. Thank you so much for joining us!

To those members participating in our 2011 awards program, remember the submission deadline for your scores is Oct. 31. Please contact Rita Pultz at [awards@wdcta.org](mailto:awards@wdcta.org) if you have questions about your submissions.

### **New Members, New Officer too**

I want to take a moment to welcome Nicki Butler onto the state board as a Member-at-Large. I met Nicki 20 years ago when she worked (very hard!) as the manager of Pleasant View Stables, the home of the UW Hooper Riding Program. Nicki is particularly passionate about eventing, and serves with the goal of representing the interests and wishes of our eventing members.

I had the pleasure of meeting her current mount, Splash, last summer when they attended a WDCTA Maryal Barnett clinic at our farm. Splash, owned by Denise Sobering, is an Oldenburg/Arabian/

Thoroughbred/Lipizzaner pinto with a huge personality.

Besides her eventing experience, Nicki is also an expert on Robert's Rules of Order. I'm sure besides learning more about the needs of our eventers, I think I'll also learn a few things about order—if you saw my closet you would understand just how badly I need that lesson! Thank you, Nicki!

### **More Camaraderie, More Fun**

One WDCTA benefit not listed on our website, but one I personally value above all else, is the opportunity I've had to interact and share with other dressage enthusiasts. Volunteering to organize events, sharing stories and experiences, and working together with other members has fostered great friendships with some truly outstanding people. We try to go to some of the same shows each year to share expenses, but also to support each other, enjoying good food and stories (ok, and wine too), and simply laughing a lot.

I enjoyed just such an event at the end of August, when a group of us took our horses to the August Lamplight show, which was not only a registered show, but also the finals competition for the Markel Young Horse National Championships, the Developing Horse Championships and the Seat Medal finals. It was a beautiful show, with fantastic horses and lots of great riding.

I will not talk about the finals, though. I want to share instead a side story of that weekend at the suggestion of my friend,



Photo by ShortHorse Studios

Mary, who thought I should try to work it into my column.

After a delightful day at the show and then a dinner of Greek cuisine and Malbec wine, my friends—Mary, Callan and I—headed back to the hotel room to wrap up our evening and get a good night's rest. Showing or clinicing had not been in the cards for me for over a year, since my husband had lost his job. Thanks to his recent employment, I shared I was so very happy to have a chance to have a weekend with such good friends, including my horse. I confessed that for the last year, while I continued to ride and enjoy my horses, my escape had been reduced from glorious horsey weekends to somewhat regular trips to Costco.

In fact, I shared, my whole family had discovered that Costco, besides being a great store, is also pretty good

**Continued on next page**

## President's Column...continued

entertainment. For example, one day I was walking through the store with my girls and, lo and behold, we stopped to investigate a bidet toilet seat. It is meant to fit over one's current toilet, and accesses an external water line for flow—it is not a self-standing unit.

My girls were simply flummoxed, and used all sorts of interrogative pronouns to try to understand the purpose of the thing. This is a remote controlled device, and the remote has about 15 buttons on it, including water temperature and flow control, directional controls, and even a control for heating the seat. The remote was sleek and very skinny—Cassy offered, "I bet that thing doesn't take AAA batteries."

Even after we left the display to continue our shopping, my girls would periodically burst into small giggles and ask some other, more silly questions.

Over dinner that night, my husband inquired what I might like for my birthday (which was coming up). My daughter, Nichole, blurted out, "Mom wants a bidet." This time, the girls offered their expert opinion on the find.

A few days later, we entered Costco again, this time joined by my husband and my son, who was visiting from school. We found ourselves once again in front of the bidet display. Kevin, who is a senior this

year, offered an academic perspective on the bidet, sharing what he knew of its history and how toilet paper, to the Europeans, is not an ideal cleaning solution. His European friends prefer bidetly cleansing (say it out loud to discover his little pun if you didn't get it). He said this perfectly straight-faced, which sent us all into a giggling frenzy.

Another week later, and my birthday fast approaching, our family once again found ourselves in front of the Costco bidet display. This time it was my husband, Dan, who took the lead. "This would be a great party tool, actually. Unsuspecting guests using the bathroom could be surprised by a remote handler standing outside the door....you know?" My kids took the idea from there, and our enthusiasm eventually drew in another family to join in on our fun. I closed my story by revealing that in the end I did not get a bidet for my birthday, which meant my bathroom would remain a prank-free zone for the time being.

Mary and Callan agreed that the gift of the story was still superb. The entertainment and laughter that came along with it—was not only free, but pricelessly funny!

Members and friends, remember to "live well, love much and laugh often."

As always, best wishes for many happy hours in the saddle.

WISCONSIN  
DRESSAGE  
& CT  
ASSOCIATION, INC.

WDCTA Members are  
Group Members  
of the  
United States Dressage  
Federation

**WDCTA is Wisconsin's  
oldest and largest GMO**

Editor

Caryn Vesperman  
(608) 455-2208  
[newsletter@wdcta.org](mailto:newsletter@wdcta.org)  
W1619 King Road  
Brooklyn, WI 53521

All advertisements, articles and photographs (with photo release) should be submitted electronically to the editor by the **15th of the month**, with payment for advertisements postmarked no later than the 15th. Ads and calendar of events submissions will appear in both the **eQuester** and on the website.

Advertising rates and requirements are under Forms on [www.wdcta.org](http://www.wdcta.org).



*Charter*

GROUP  
MEMBER  
ORGANIZATION



Photo by Caryn Vesperman

The editor's pumpkin carving of the Headless Horseman. Happy Halloween!

# BITS 'N PIECES

## NEWS ABOUT MEMBERS, NEWS TO HELP MEMBERS



### The WDCTA Facebook Page Keeps You In-the-Know

To stay current on what's happening with WDCTA during the weeks between the monthly newsletter, go to Facebook and join the

[WDCTA Facebook page](#). You'll hear about state and chapter events, you can ask questions and give kudos to members' accomplishments. Join us, Face to Face!

### 2012 WDCTA Membership Drive Underway

Time to rejoin WDCTA. The 2012 membership application is posted on our website [under Forms](#). Our membership year moved up one month last year to coincide with the USDF's membership year. An added advantage to this is that you won't have to pay for membership dues when your money is already being spent on holiday presents. So get ahead of the holiday bills and join today!

### SIBB Listing: A Great Way to Advertise Your Business

At the same time you join WDCTA, don't forget to submit your information as a stable owner, instructor, breeder or business owner. We've had an influx of new members who aren't familiar with what we offer in this area, so the SIBB Listing is a great way to get the word out. NOTE that the new 'business' listing is for retail businesses such as feed

stores, tack shops, truck and trailer sales, fencing companies—anything not already covered by the stable, instructor or breeder listing. Remember, these listings are also posted on our website, which is accessed by visitors beyond only WDCTA members.



### Awards Program: Deadline is this Month!

Remember to submit your scores (postmarked) by Monday, Oct. 31. The prizes from years' past have been awesome, and the awards banquet has been great fun. So don't miss getting the award you earned this year because you missed the submission deadline.



### Check Out (*literally!*) WDCTA's Book and Video Library

Find the complete listing of books and DVD/videos on the [WDCTA website](#).

## WDCTA State Board

### President

Pam Doolittle (608) 644-9423  
[president@wdcta.org](mailto:president@wdcta.org)

### Vice President

Martha Flury (262) 723-2656  
[vp@wdcta.org](mailto:vp@wdcta.org)

### Secretary

Sue Genin (608) 882-6580  
[secretary@wdcta.org](mailto:secretary@wdcta.org)

### Treasurer

Angela Genin (608) 516-2293  
[treasurer@wdcta.org](mailto:treasurer@wdcta.org)

### Historian

Anne Zaharias (906) 864-2790  
[historian@wdcta.org](mailto:historian@wdcta.org)

### Video Librarian

Donna Thomas (608) 835-8549  
[librarian@wdcta.org](mailto:librarian@wdcta.org)

### Editor

Caryn Vesperman (608) 455-2208  
[newsletter@wdcta.org](mailto:newsletter@wdcta.org)

### Members-at-Large

Stephanie Severn (608) 213-8925  
[mal1@wdcta.org](mailto:mal1@wdcta.org)

Chet Thomas (608) 835-8549  
[mal3@wdcta.org](mailto:mal3@wdcta.org)

Nicki Butler  
[mal2@wdcta.org](mailto:mal2@wdcta.org)

### Membership Recorder

Diane Brault (608) 924-1808  
5184 County Road HH  
Barneveld, WI 53507  
[membership@wdcta.org](mailto:membership@wdcta.org)

### Awards Recorder

Send forms to:  
Rita Pulz  
5593 Bellbrook Road  
Brooklyn, WI 53521  
[awards@wdcta.org](mailto:awards@wdcta.org)

### Webmaster

Stephanie Severn (608) 213-8925  
[website@wdcta.org](http://website@wdcta.org)

### Eastern President

Tara Ragatz (414) 331-4775  
[eastern@wdcta.org](mailto:eastern@wdcta.org)

### Kettle Moraine President

Nancy Lightfield (262) 949-6945  
[km@wdcta.org](mailto:km@wdcta.org)

### Southwest Chapter President

Donna Thomas (608) 835-8549  
[sw@wdcta.org](mailto:sw@wdcta.org)

### SW Chapter Representative 1

Pam Doolittle (608) 644-9423  
[president@wdcta.org](mailto:president@wdcta.org)

### SW Chapter Representative 2

Heather McManamy (608) 886-3764  
[president@wdcta.org](mailto:president@wdcta.org)

### Upper Peninsula President

Karin Steffens (906) 346-6497  
[up@wdcta.org](mailto:up@wdcta.org)

# On The Bit

Caryn Vesperman  
eQuester Editor

## Thinking Outside the Box (And Inside too)

This summer has flown by. Other than when I've been in the office, it seems as if I have either been riding (sometimes in front of the judge in the box) or *in* the box judging as an L candidate. I have learned a lot from both vantage points.

### Thinking Inside the Box

Going through the L program and the final exams helped me really see what the judges are looking for, understand more about dressage, and see a test from their perspective. Judging isn't easy, that's for sure.

I enjoy my time judging. I get a kick out of how earnest and determined the kids are. A show I judged at the end of September had a number of five- and six-year-olds riding not just ponies, but half-drafts they ably steered around the ring. Now at Intro level, the concept of "on the bit" still alluded many of them, but that made it no less impressive to me to watch them maneuver 1,000-pound horses through the test. Bless those horses' hearts! We all know at any moment, they could say to their little riders, "Appreciate the carrot you gave me when you were tacking me up, but I'm outa here. Gonna join my buddies back at the barn," and then launch their little riders to the moon. But they don't! I always marvel at how kind a horse can be and tolerant of our mistakes.

We only had one horse on that day decide to leave the ring, and he left, not in any nasty way, just declined to continue turning on the circle and deftly hopped over the ring's edge and start trotting back to the barn. I let her come back in and finish the test.

The only incident that made me catch my breath was when a horse stood on its hind legs. I don't think it was being deliberately nasty. Naughty? Definitely. But the young girl did everything right: She leaned forward, let the reins go soft and when his front legs returned to earth, she encouraged him forward and on they went, like nothing happened. I gave her a good score for

effective use of the aids! I was quite impressed at how effective and non-plused she was, at such a young age! Maybe she is still at the age when it doesn't hurt so much to eat dirt.

I also enjoy schooling shows' camaraderie. The riders, young and older, the parents, the friends -- all show such support for each other. Even when a somewhat naughty pony races 50 miles per hour through the whole test, the people clap and cheer for how the rider stuck with it. And after the show, there's nothing so special as talking with the kids who proclaim with shining eyes, "I love my horse."

For someone like me, who doesn't sit still even at the office, I was a little worried how I would cope being cooped up in a judge's box all day, but as I said, the day seems to fly by. I truly enjoy the kids and the adults who are there enjoying their horses and trying so hard.

### Thinking Outside the Box

Going through the L program has made me a better show rider too. The only downside is, I have to learn to quit talking to myself during a test! I'll ride a movement and subconsciously score myself. "That was a seven," or "Oh, oh, I'll be lucky, very lucky, if the judge gives me a four."

The truth is, the show ring is the great equalizer, no matter what the level of rider skills or how fancy the horse. Things happen... horses spook, horses say, "No." We riders forget our test or let show nerves get in the way.

Learning definitely happens



bothinside and outside The Box.

To learn more about showing from the judge's perspective, audit an L program. If a show needs a scribe, volunteer. You'll learn a lot. Guaranteed.

*Send me your thoughts and news for upcoming issues of the eQuester. I need you as regional reporters!*

## TRAINING AND BOARDING IN LAKE GENEVA

*Just the place for you and your horse.*

### Amenities include:

- 🏡 72x180 indoor arena-excellent footing
- 🏡 80 X 200 outdoor arena
- 🏡 Stalls (10X12, 12X18, 12X24), starting at \$425
- 🏡 Custom feeding
- 🏡 Private turnouts
- 🏡 Indoor and outdoor wash racks
- 🏡 Automatic fly spraying system
- 🏡 Automatic watering system

Plus, training and lessons with...**Shelly Day**  
*USDF Bronze and Silver Medal and  
USDF Bronze and Silver Freestyle Bar*

For more information, contact:

**Theresa Milbocker**

Immanuel PRE Champions

[www.Immanuelprechampions.com](http://www.Immanuelprechampions.com)

# Cross Training:

## How Members Use Ridden Dressage in Training Their Horses to Drive

By Donna Thomas

A number of WDCTA members drive as well as ride their horses. Like many FEI-level driving competitors, among them Sara Schmitt (also a USDF gold medalist and USEF "S" judge) and Larry Poulin, our members find that ridden dressage improves their equine driving partners. At the 31st Villa Louis Carriage Classic, Sept. 9-11 in Prairie du Chien, WI, I asked the four WDCTA members who were competing—all with great success—to comment on cross training using ridden dressage.

**Betsy Freiburger**, co-owner of Hickory Knoll Farm, Fitchburg, WI, competes in pleasure shows and combined driving events (CDEs):

*"Simply stated, the only difference in riding and driving dressage is that in driving, your legs have no effect. Therefore, you must have an active and giving hand to continuously ask the horses to submit to the bit as you coax them forward with your whip and voice. I always ride my driving horses, as the concepts of submission, bending and rhythm compliment my work when driving. When I drive my horses and ponies, I find that I can see my ridden dressage progress, as it shows up in the driven dressage movements."*

**Amy Hartwig**, trainer for Long View Grange Fjords, Watertown WI:

*"Driving tends to hollow and weaken a horse's back, and the use of ridden dressage helps to strengthen the back. It also teaches and maintains the correct collection that is required of driving horses. For me, the communication that is established through riding aids transfers to driving aids which makes for a nicer, more responsive driving horse. Personally, I have been captivated by dressage riding since the first time I saw it in 1992. I'm so blessed that now I have the application in the driving horses that I train. It gives me focus and motivation to develop my riding, driving and training using dressage."*



**Amy Hartwig drove Uno, who has only been in harness a short while, in the Novice Pony division.**  
Photo by Peggy Spear



**Betsy Freiburger competed her German Sport ponies, Geronie and Galiana, in the Pony Pairs division. Debbie Bevan is the groom.** Photo by Else Bigton

**Samantha Poirier**, trainer for Green Valley Farm, Galena IL:

*"Ridden dressage has helped my driving immensely. Not only is Sjokolade ("Hershey") a better horse all around, but doing ridden dressage has improved us both. Riding is helping Hershey get his hind legs under him to encourage him to take a larger stride and do a true lengthening rather than just trotting faster. The steady contact from ridden dressage helps create a whole frame, from the hind legs being under to the top line being round, resulting in better movement. It is hard to bend the horse, in my opinion, without your legs. A better connection when riding and bending the whole body, not just the head and neck,*

**Continued on next page**

## Cross Training: Driving...continued

transfers right over to the driving. I rode Hershey all last winter. I hadn't driven him for nine months, then a week before the Columbus Driving Festival in June, had to substitute him for another horse we'd entered. He drove a million times better than he did last fall! Ridden dressage has completely changed our driving world, and it can only get better from here!"

(Right) Chet Thomas and Trina attack an obstacle in the Single Horse Open Gambler's Choice class. Photo by Peggy Spear



Samantha Poirier and the versatile Fjord stallion, Sjokolade, trotting out in the cross country class, on their way to the Large Pony division championship. Passenger is mom, Jeanne Poirier, all the way from Colorado. Photo by Else Bigton



Peggy Peregrine-Spear and Dutch in their dressage test at the 2010 Hickory Knoll CDE, winning the preliminary-level single pony division.



Joann Williams and CF Ladysmith earned Reserve Champion in their driving debut at the 2011 Welsh of Wisconsin show.

**Chet Thomas**, Brooklyn WI, enthusiastic competitor in pleasure driving shows and CDEs:

"Although we were sorry that Donna had to retire her dressage horse, over the past year she's had more time to ride our 11-year-old Fjord mare, Trina, and work regularly with trainer Kate Van Sicklen. The difference in Trina as a driving horse is huge! She is now getting her hind legs more under herself,

which significantly lightens her forehead and improves her balance. Her entire appearance has changed, with better muscling in all the right places. At the driving shows this year, people frequently commented on these changes."

**Kate Van Sicklen** concurs: "Dressage has definitely improved

Trina's overall way of going and presence."

Two other members who drive competitively also contributed their thoughts.

**Peggy Peregrine Spear**, owner of Falcon Point Fjords in Marshall, WI and a successful competitor in pleasure shows and CDEs: "Ridden dressage definitely adds so many benefits to my driving! It makes the movements needed in all areas of driving

easier. It helps me keep Prisco ("Dutch") better balanced and using all parts of his body correctly. He learns to rely on the power of his hind end, so when he pulls the cart he doesn't drop on the forehead and pull from the chest only. His understanding of the outside and inside rein aids through riding keeps him light and in the correct bend. When competing in CDEs, the understanding of the outside rein aid, half halts and collection make turning quicker and more balanced, for faster times in the obstacles."

**Joann Williams**, trainer and USDF gold medalist, who recently began driving her Welsh Cob mare:

"It was very easy to convert my mare to driving as she was already working at first/second level. The lateral work under saddle has really helped her learn how to bend properly while being driven. Work in long lines is applicable to both riding and driving. Conversely, the driving has improved her ability to lengthen her stride at trot, and has definitely increased her stamina."

# CALENDAR

*A listing in the Calendar of Events is a service provided to WDCTA members only.  
Send your submissions to [newsletter@wdcta.org](mailto:newsletter@wdcta.org) by the 15th of each month.*

## WDCTA State & Chapter Meetings

### **Tuesday, October 11**

Southwest Chapter - 6:30 p.m.  
Equine massage demo with Nicki Butler, followed by  
business meeting and 2012 program planning.  
Hickory Knoll Farm, 5438 Hwy M, Fitchburg.

### **Tuesday, November 8**

Southwest Chapter - 6:30 p.m.  
2012 chapter officer elections  
Culvers, Madison (beltline and Fish Hatchery)

### **Saturday November 12**

WDCTA State Board Meeting - 11:30 a.m.  
Culvers, 900 Kelly Ave., Waupun, plus Skype

### **Saturday, December 10**

Southwest Chapter - 1 p.m.  
Death by Chocolate holiday party  
Date and location TBA

### **Saturday February 25, 2012**

WDCTA State Board Meeting - 10 a.m.  
At the WDCTA annual conference  
Location - TBA

## WDCTA Clinics & Events

### **Oct. 21-23, 2011**

Janet Foy Clinic  
Judd's Green Meadows Farm, Belleville, WI  
Contact: Mary Hanneman \* No auditing charge for  
(608) 712-0975 or [WDCTA members](mailto:WDCTA members)  
[mahanneman@gmail.com](mailto:mahanneman@gmail.com)

### **Nov. 19-20**

Steffen Peters and Janet Foy: Through the Levels  
Symposium  
Sponsored by Southwest Chapter  
Location: Sunflower Farms, Bristol, WI  
Contact: Mary Hanneman at (608) 455-1037  
[mahanneman@gmail.com](mailto:mahanneman@gmail.com)

### **Feb. 26, 2011** *(tentative, depending upon speaker availability)*

WDCTA Annual Conference & Awards Banquet  
Save the date! More info to come.  
Contact: Pam Doolittle (608) 644-9423  
[psdoolittle@yahoo.com](mailto:psdoolittle@yahoo.com)

## Shows

*Remember, only USDF/USEF recognized shows or schooling  
shows designated as WDCTA-recognized are eligible for  
WDCTA year-end awards.*

### **Oct. 15-16**

Silverwood Dressage & Championship  
Camp Lake, WI  
USEF/USDF recognized  
Contact: Lisa Cannata 847-235-6410  
[dressage@silverwoodfarm.net](mailto:dressage@silverwoodfarm.net)  
[www.silverwoodfarm.net](http://www.silverwoodfarm.net)

### **Oct. 15-16**

Heartland Dressage Schooling Show  
7510 Deer Rd, Custer, WI 54423  
Judges: Lois Heyerdahl 'S' - Sat., Jody Ely 'L' - Sun.  
Contact: Betty Foss 715-592-4171  
[bettyfoss@heartlandstables.com](mailto:bettyfoss@heartlandstables.com)

*NOTE: All classes recognized by WDCTA on Saturday*

*but ONLY Intro thru 2nd level recognized on Sunday*

### **November 12-13**

USEF/USDF Dressage Show (indoors) #327908  
Fields & Fences, Gurnee, IL 60031  
Contact: Anita Schadeck 847-244-4121 or  
[www.fieldsandfences.com](http://www.fieldsandfences.com)

## Non-WDCTA Events

### **October 8-9**

Katie Hiller Clinic  
Plum Lake Dressage, Sayner, WI  
Contact: Debra Stephenson  
(715) 542-3742 or  
[plumlakedressage@gmail.com](mailto:plumlakedressage@gmail.com)

### **Oct. 14-17**

Clinic with Alex Gerding  
Touchstone Farm, Brooklyn, WI  
Contact: Caryn Vesperman \* No charge for auditors  
(608) 455-2208 or  
[touchstonefarm@gmail.com](mailto:touchstonefarm@gmail.com)

### **Nov. 4-6**

Clinic with Gerd Zuther  
Touchstone Farm, Brooklyn, WI  
Contact: Caryn Vesperman \* No charge for auditors  
(608) 455-2208 or  
[touchstonefarm@gmail.com](mailto:touchstonefarm@gmail.com)

### **Nov. 5**

Open House at Lindinhof Equine Sports Zentrum  
4246 Schneider Drive, Oregon, WI  
Contact: Megan McIsaac  
(608) 445-8531  
[lindinhof1@aol.com](mailto:lindinhof1@aol.com)

### **Nov. 5-6**

Tom Noone Clinic  
Oconomowoc, WI  
Contact: Jenna Strauss  
(262) 313-8926 or  
[jennifer\\_strauss2000@yahoo.com](mailto:jennifer_strauss2000@yahoo.com)

### **November 5-6**

Katie Hiller Clinic  
Plum Lake Dressage, Sayner, WI  
Contact: Debra Stephenson  
(715) 542-3742 or  
[plumlakedressage@gmail.com](mailto:plumlakedressage@gmail.com)

### **Dec. 2-5**

Clinic with Alex Gerding  
Touchstone Farm, Brooklyn, WI  
Contact: Caryn Vesperman \* No charge for auditors  
(608) 455-2208 or  
[touchstonefarm@gmail.com](mailto:touchstonefarm@gmail.com)

# Golden Oak Leaf Farm For Sale

## Searching for a special place to call home?

One with:

- Every custom feature you've dreamed of,
- An equestrian facility to allow you to reach your riding goals,
- A workshop to explore your creative passions,
- Enough land for hunting or just peacefully gathering your thoughts with nature?

Then this is the place! This home is expertly situated on a gorgeous 80-acre piece of paradise with private protected views of the hills of west central Wisconsin, 2-1/2 miles southeast of Tomah ("Where the I Divides").

Built in 2003, the 3-bedroom, 2-1/2 bath, 3,900 sq. ft., single story home has a fully finished walk-out lower level. The **kitchen** – the centerpiece – features custom master-craftsman solid cherry and maple cabinets with natural granite countertops. The **living room** has a cathedral ceiling, wood-burning stone fireplace and million-dollar southern exposed view. The **den** has 12' high ceiling, cherry-and-glass doors and solid Brazilian cherrywood flooring. The **master suite** has an unbelievable view, tray ceiling with a walnut-and-leather ceiling

fan. The **master bath** includes custom-molded whirl-pool tub, his and hers vanities, walk-in closet and European-style tile shower. The **office** will set your direction for the day with its wood inlayed compass in the solid maple flooring.



What you don't see is just as special. The heating and cooling system is the ultimate of "green": a water source heat pump. The lower level floor and

fan. The **master bath** includes custom-molded whirl-pool tub, his and hers vanities, walk-in closet and European-style tile shower. The **office** will set your direction for the day with its wood inlayed compass in the solid maple flooring.

master bath tile have in-floor hot water heating provided by an off-peak electric boiler for ultimate comfort at the lowest operating cost. The foundation walls have 2" of rigid insulation inside and out to keep all the heat in.

The **workshop** is 48' x 60' with a concrete floor under the entire building. The south half is finished, insulated and heated for a professional woodworking shop. The other half has an 8' x 10' overhead door to store all of your toys and equipment inside.

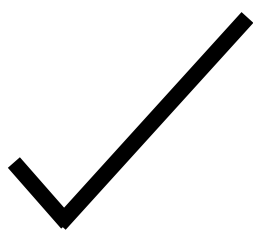
The **equestrian center** has a 72' x 144' indoor riding arena with a dressage base, seven stalls and heated lounge with a toilet in the 36' x 54' stable. The paddocks are fenced to allow two pastures to use one automatic waterer. In addition, 31 acres are planted in share-crop hay, which provides enough hay to keep up to 15 horses year-round. Currently Golden Oak Leaf has several boarders.

[www.goldenoakleaf.com](http://www.goldenoakleaf.com)

Offered for sale by owners at \$758,000. Owners are in the real estate business and welcome creative proposals.

For your private showing or more information, contact Brad at [bradkortbein@gmail.com](mailto:bradkortbein@gmail.com) or Jessica at [americ@centurytel.net](mailto:americ@centurytel.net).

2/12



*Check the WDCTA website to keep up on state and chapter activities and minutes so you know what is going on state-wide and in your region.*

WDCTA  
Business  
Members

Support your WDCTA  
business members.  
Buy local!

Day Dressage  
Shelly Day

Excalibur Insurance  
Tom Mikulice

Hickory Grove Farm  
Andrea Schten

Lindinhof Equine Sports Zentrum  
Megan McIsaac

Midwest English Tack  
Kim Amini

OTS Sunrise Farm  
Wilma Prins

Pen Bryn Farm, LLC  
Valerie Ahl

Silverwood Farm  
Lisa Froehlig

Stonegate Equestrian Center  
Hazelhurts, WI

Sunflower Farms  
Bristol, WI

# MarketPlace



Breeders helping breeders since 1999

Midwest Breeders Group

4595 Mahoney Rd. McFarland, WI 53558

midwestbreedersgroup@gmail.com

[www.breedersgroup.com](http://www.breedersgroup.com)

608-213-8925



**ANDREA SHTEN**

DRESSAGE INSTRUCTION & TRAINING

BARREAU FARM LLC.

W349S10131 BITTERSWEET CT, EAGLE, WI 53119,

MAIL: PO Box 316, MUKWONAGO, WI 53149-0316

CELL: (262)470-4557 • ASCHTEN@HOTMAIL.COM

WEB: WWW.ANDREASCHTEN.COM

**SportHorseProspects.com**



**Specializing in World Class Bloodlines**

Pen Bryn Farm, LLC, Madison, Wisconsin

Owner: Valerie Ahl, Ph.D.

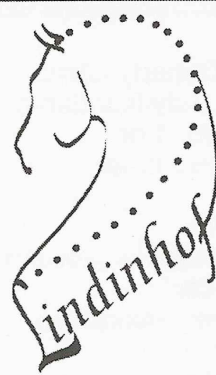
Sales Manager: Fiona Wilby

Phone: 608.698.7924

Email: [Fiona@Wilby.com](mailto:Fiona@Wilby.com)

[Val@SportHorseProspects.com](mailto:Val@SportHorseProspects.com)

Find your next Dressage/Eventing/Jumping partner horse here!!



Megan McIsaac  
President

LINDINHOF EQUINE SPORTS  
Zentrum

DRESSAGE TRAINING • SALES • LESSONS  
All Levels - F.E.I.

4246 Schneider Dr. • Oregon, WI 53575

(608) 445-8531

[lindinhof1@aol.com](mailto:lindinhof1@aol.com)

[www.lindinhof.com](http://www.lindinhof.com)

[www.nodoubtmcisaac.com](http://www.nodoubtmcisaac.com)

**SUNFLOWER FARMS**

\* PRIVATE \*

Full Facility Horse Care Center

19000 128th St.

Bristol, WI 53104

**Phil May**

Main 262-857-8555

Fax 262-857-3505

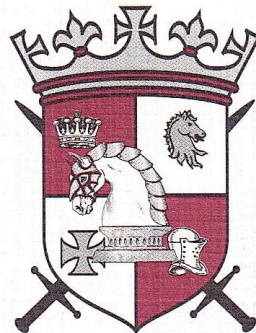
Cell 262-620-4846

[reinsman@aol.com](mailto:reinsman@aol.com)

[Phil@SunflowerFarms.com](mailto:Phil@SunflowerFarms.com)

**SUNFLOWER FARMS**

**EXCALIBUR**  
INSURANCE AGENCY



Equine Insurance

MORTALITY • FARMOWNERS • LIABILITY

**Thomas C. Mikulice**

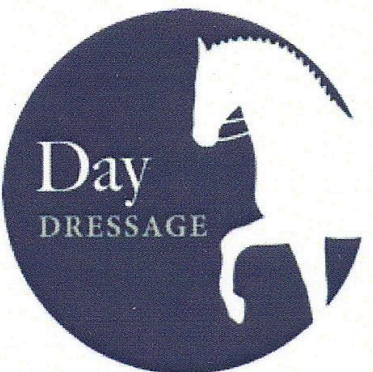
**800-617-2450**

[www.excaliburinsurance.com](http://www.excaliburinsurance.com)

Local: 262-367-2450 • Fax: 262-367-4250

P.O. Box 500 • Hartland, WI 53029

Day  
DRESSAGE



**SHELLEY L. DAY**

Lessons Training

*Will Travel*

414.403.8491

[www.daydressage.com](http://www.daydressage.com)

[sdressage04@yahoo.com](mailto:sdressage04@yahoo.com)

# MIDWEST ENGLISH TACK

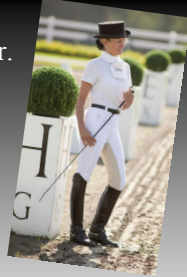


Equestrian products, supplies, and apparel for the discriminating English Rider

Pikeur - FITS - Herm Sprenger - Gersemi - Stubben - Passier - Horseware - Kentucky - Fleck - Irideon - Rectiligne - Cavallo - Red Barn - Walhausen - Kerrits - Amerigo - Eurofit - Mattes - Thinline - Charles Owen - Equilibrium



HWY 59 & 83  
W309S4837 COMMERCIAL Dr.  
GENESEE DEPOT, WI 53127  
Phone: (262) 968-9088



[www.midwestenglishtack.com](http://www.midwestenglishtack.com)

*Visit us at our store or  
stop by when you see us at shows!*



Savannah HF—4yo RPSI mare by Sempatico M. Gorgeous uphill mover, sweet and very easy to handle. Stands 16.1H, should mature 16.2-16.3H.

Nicely started under saddle! \$18,500.  
[www.hopefulfarm.com](http://www.hopefulfarm.com)  
608-213-8925

KPWN, Oldenburg, and TB sporthorses for sale including yearlings, 2yos, training level horses and broodmares. Visit our website for current pictures, updated videos and more information.  
[www.WrenwoodStables.com](http://www.WrenwoodStables.com)  
210-508-1112



Accolade HF—3yo premium Oldenburg (GOV) gelding by Abke—Coriander—Le Champion. Big, sweet gelding with super movement and he can jump! This sweet boy has a puppy-dog personality. \$15,000  
[www.hopefulfarm.com](http://www.hopefulfarm.com)  
608-213-8925

All the horses here are offered by members of Midwest Breeders Group. For horse sales, stallion, and membership information, visit us on the web at [BreedersGroup.com](http://BreedersGroup.com) or call 608-213-8925



# Horses For Sale

Accolade HF— 3yo Premium Oldenburg Verband gelding by Abke—Coriander. Bred to jump but he's an incredible mover for dressage. Sweet boy, very easy to handle. Ready to start this summer. Should mature 17—17.2H. A steal at \$15,000! →



Lorelei—3yo RPSI Gold Premium mare by Redwine (Rotspoon - Matcho AA). She was the Champion filly and the highest scoring foal of her inspection. Very sweet, very easy to handle. Lovely dressage or hunter prospect. ← \$15,000

Savannah HF—Beautiful 4yo mare by Sempatico M. Gorgeous mover with three very good gaits, beautiful color. Nicely under saddle, soft and easy, trailers, cross ties, clips, bathes. Get noticed in the show ring with her movement and color! \$18,500 →



Stephanie Severn, Hopeful Farm Sport Horses  
McFarland Wisconsin  
608.213.8925 · [www.hopefulfarm.com](http://www.hopefulfarm.com)  
[info@hopefulfarm.com](mailto:info@hopefulfarm.com)

## 2011 WDCTA Chapter Officers

### Eastern

President - [Tara Ragatz](#) (414) 331-4775  
Vice President - [Paula Rush](#) (414) 870-1320  
Secretary - OPEN  
Treasurer - [Jennifer Callies](#) (262) 339-4775

### Kettle Moraine

President - [Martha Flury](#) (262) 723-2656  
Vice President - Nancy Lightfield  
Treasurer - [Joann Williams](#) (414) 378-2231  
Secretary - [Kathy Weishampel](#) (262) 719-8438

### Southwest

President - [Donna Thomas](#) (608) 835-8549  
Vice President - [Sue Genin](#) (608) 882-6580  
Treasurer - [DeAnn Howard](#) (608) 882-4196  
Secretary - [Caryn Vesperman](#) (608) 455-2208  
Representative - [Pam Doolittle](#) (608) 644-9423  
Alt. Representative - [Stephanie Severn](#) (608) 835-1820

### Upper Peninsula

President - [Karin Steffens](#) (906) 346-6497  
Vice President - [Anne Zaharias](#) (906) 864-2790  
Treasurer - [Tracee Horn](#) (920) 346-3624  
Secretary - [Judi Izzi](#) (906) 384-6955

# Stable - Instructor - Breeder - Business Listings

Listings provided as a service and are not an endorsement of any member or facility listed. Must be a WDCTA member to be included.

## Stable Listings

### BITTERSWEET FARM LL

Jennifer Kraemer  
344 Ct. Rd. FF  
Picket, WI 54964  
920-589-2709

[bittersweetfarm@ntd.net](mailto:bittersweetfarm@ntd.net)

Clean, well-lite, ventilated 12 x 12' stalls w/mats. hot/cold water, heated tack room, lounge, 70 x 140' indoor w/ mirrors, excellent footing, jumps, small XC field and 20 x 60 m grass outdoor.

### BLUE RIBBON BOARDING, LLC

Penny Oneson-DoBas  
W3842 Sunset Road  
Plymouth, WI 53073  
920-207-7077

[izhe01@gmail.com](mailto:izhe01@gmail.com)

70x200 indoor arena. 12x12 matted stalls. Exceptional care and feeding program. Daily turnout in appropriate herd group or individual paddock. Lessons available.

### DUNDEE TRAINING STABLE

Tracy Dikkers  
N6482 Silver Road  
Monticello WI 53570  
608-938-2410

[dundee@tds.net](mailto:dundee@tds.net)

Small private facility, indoor and outdoor. Lessons available.

### EQUESTRIAN ENDEAVORS

Erinn Bieber  
N4845 Highline Road  
Bonduel, WI 54107  
715-460-0532

[erchelstrom@gmail.com](mailto:erchelstrom@gmail.com)

60 x 200' indoor with mirrors, standard outdoor dressage ring, large pasture turnout or small paddock (individual or small group), wash stall w/ hot and cold water, dressage and jumping instructors at facility and hosts dressage and jumping clinics.

### GOLDEN OAK LEAF DRESSAGE

Jessica Kortbeing  
27459 Holland Avenue  
Tomah, WI 54660  
608-387-0293

[americ@centurytel.net](mailto:americ@centurytel.net)

### GOLDEN HORSESHOE FARM

Angela Rabe  
N4609 Hwy. 59  
Monroe, WI 53566  
414-617-6022

[jedinight55@yahoo.com](mailto:jedinight55@yahoo.com)

75 x 175' sand outdoor arena, large round pen, large pastures, individual turnout. Lessons, school horses available. Will travel.

### GRAND PRIX FARM

Jackie Luebke-Puetz  
15034 Hwy. X  
Kiel, WI 53042  
920-693-3367

[cvestor@aol.com](mailto:cvestor@aol.com)

66 x 150' indoor arena w/ mirrors, viewing lounge, h/c wash rack, matted stalls, cleaned daily, 4X/day feedings, screened facility -- no bugs, heated bathroom, hunt course, outside dressage ring, lesson horse available.

### HEARTHSTONE FARM INC

Jayne Ayers  
W381 S5225 Hwy. ZC  
Dousman WI 53118  
262-965-2066

[www.dressagehorse.com](http://www.dressagehorse.com)

60 acres, daily turn-out, heated indoor arena, trails on property, retiree board available.

### HERITAGE STABLE

Jennifer Strauss  
812 N. Griffith Road  
Oconomowoc, WI 53066  
262-313-892

[www.jlssportshorses.com](http://www.jlssportshorses.com)

[heritagestables812@msn.com](mailto:heritagestables812@msn.com)

60 x 120' mirrored indoor w/ new sand/future track footing, new standard-size outdoor arena, 8+ hours of turnout daily -- weather permitting, heated lounge, miles of trails, xc course -- 2' preliminary height fences, river/creek for water therapy and conditioning, dressage/jumping lessons available.

### HICKORY KNOLL FARM

Betsy Freiburger  
5438 Hwy. M  
Fitchburg, WI 53575  
608-835-7473

[frei@chorus.net](mailto:frei@chorus.net)

Indoor and outdoor arena, turnout, heated lounge, wash stall, trails and lessons.

### HOPEFUL FARM SPORT HORSES

Stephanie Severn  
4595 Mahoney Road  
McFarland, WI 53558  
608-213-8925

[hopefulfarm@gmail.com](mailto:hopefulfarm@gmail.com)

Small, private facility on 41 acres, 12 x 14' matted stalls, 80 x 175' outdoor arena w/ solid footing and Triple Crown 3-rail fencing. Daily turnout in appropriate herd group. Over a mile of excellent trails surrounding the pastures. Buckeye feed available.

### LINDINHOFF EQUINE SPORTS ZENTRUM

Megan McIsaac  
4246 Schneider Drive  
Oregon, WI 53575  
608-445-8531

[Lindinhof1@aol.com](mailto:Lindinhof1@aol.com)

Indoor with mirrors and 80 x 200 sand outdoor. Individual and group turnout. Wash stall. Num-erous trails. Solarium. Lessons and monthly training available.

### PARADIGM FARM

Shelly Reichart  
N5834 Co. Rd. S  
Lake Mills, WI 53551  
414-881-1830

[paradigmfarmllc@aol.com](mailto:paradigmfarmllc@aol.com)

Very private, 12-stall facility with beautiful, heated 60 x 180' indoor arena, 75 x 210' outdoor arena, daily private or group turnout, indoor and outdoor wash racks. Heated stable area, tack rooms, full bathroom and lounge. Training and lessons available from Shelly Reichart.

### PEN BRYN FARM, LLC

Valerie Ahl  
4321 State Road 138  
Oregon, WI 53575  
608-698-7924

[val@sporthorseprospects.com](mailto:val@sporthorseprospects.com)

Full-service facility, individualized care. 76' x 126' indoor arena w/ mirrors, a 100' x 200' outdoor arena w/ dressage arena, trails, jumps, cross-country obstacles.

### PRATT STABLE

Paula Pratt  
8434 Central Sands Road  
Bancroft, WI 54921  
715-335-4130

[prattfarm@hotmail.com](mailto:prattfarm@hotmail.com)

Boarding, lesson, breeding, training facility. 70 x 140' indoor w/ rubber footing, mirrors. Three full outdoor arenas, two round pens, jumps, trails. Heated tack rooms, lounge and wash rack. Matted stalls, daily turnout, cleaning. Dressage clinics, lessons and lesson horses.

### SENTINEL FARM

Anne Zaharias  
W4769 Million Dollar Road  
Menominee, WI 49858  
906-864-2790

[sentinelfarm@mari.net](mailto:sentinelfarm@mari.net)

70 x 150 indoor, 100 x 200 outdoor. D-level XC course, 12 x 12' matted stalls, heated lounge, hot water wash rack, private paddocks or group pasture turnout.

### SILVERWOOD FARM

Lisa Froehlig  
P.O. Box 192  
Camp Lake, WI 53109  
262-889-4700

[promopony@aol.com](mailto:promopony@aol.com)

Heated barn, 7 outdoor arenas, 80 x 160' mirrored indoor arena, wash stalls, large wood-fenced pastures, rehab turnouts, 100 acres with XC courses, four FEI trainers.

### SUNFLOWER FARM

19000 - 128th Street  
Bristol, WI 53104  
262-857-8555

[reinsman@aol.com](mailto:reinsman@aol.com)

7 heated barns, 3 indoor heated arenas, 3 outdoor dressage rings, 24-hr. security, 170 acres.

Continued on next page

**Instructor Listings**

**JAYNE AYERS**

**Hearthstone Farm Inc.**  
**W381 S5225 Hwy. ZC**  
**Dousman, WI 53118**  
**262-965-2066**  
[www.dressagehorse.com](http://www.dressagehorse.com)  
 Have produced many horses and riders who are national award winners. Specialize in teaching rider seat and aids, as well as using FEI judging skills to coach for competitions. Ridden thru G.P.; many USDF Horse of the Year awards, long-listed U.S. equestrian team. 40 years teaching experience, beginner thru G.P. Will travel. School horses available.

**ERINN BIEBER**

**Equestrian Endeavors**  
**N4845 Highline Road**  
**Bonduel, WI 54107**  
**715-460-0532**  
[erchelstrom@gmail.com](mailto:erchelstrom@gmail.com)  
 Shown and trained through I-1 and earned USDF Bronze and Silver medals. Will teach all levels. School horses available. Will travel for lessons and available for clinics. Will trailer and travel to shows.

**SHELLEY DAY**

**1324 S. 124th**  
**West Allis, WI 53214**  
**414-403-8491**  
[sdaydressage04@yahoo.com](mailto:sdaydressage04@yahoo.com)  
 USDF Bronze & Silver Medalist; USDF award winner; completed through I1 on self-trained horse. Have 25 years teaching & training experience. Will travel in WI & IL. School horses available. Reference available upon request.

**KIMBERLY DEATON-IWEN**

**Wisconsin Equestrian Center**  
**2486 Old Martin Rd.**  
**DePere, WI 54115**  
**920-737-4936**  
[giwen@new.rr.com](mailto:giwen@new.rr.com)  
 Training, instruction, clinics offered. USDF Gold, Silver, Bronze medalist. Several national awards including USDF Horse of the Year on self-trained horses. USET developing list. Enjoy working with all breeds, ages and levels of riders. Have trained with many European trainers over past 30 years. Trailer-in lessons available.

**TRACEY DIKKERS**

**Dundee Training Stable**  
**N6482 Silver Road**  
**Monticello, WI 53570**  
**608-938-2410**  
[dundee@tds.net](mailto:dundee@tds.net)  
 USDF Bronze and Silver Medalist. "L" graduate w/ distinction. Trained and shown through PSG. Will travel in Madison area.

**LISA FROEHLIG**

**Silverwood Farm**  
**P.O. Box 192**  
**Camp Lake, WI 53109**  
**262-889-4700**  
[promopony@aol.com](mailto:promopony@aol.com)  
 20 years teaching experience, will teach Intro thru G.P. 30 years riding experience – USDF Bronze, Silver and Gold Medals. Will do some travel.

**AMANDA JOHNSON**

**6680 W. River Pointe Drive**  
**Franklin, WI 53132**  
**319-331-3241**  
[ajohnsonborchardt@gmail.com](mailto:ajohnsonborchardt@gmail.com)  
 15 years training experience; USDF Bronze, Silver, Gold medals; multiple USDF year-end awards, won CDI competitions, coached students to their USDF Bronze and Silver medals. Will teach beginner thru Grand Prix. Trained and shown Training level to Grand Prix, plus FEI Young Horse. Will travel.

**TRACY KISSEL**

**Serenity Farm**  
**2803 Old Park Road**  
**Sheboygan, WI 53081**  
**920-918-3685**  
**920-457-5353**  
 USDF Bronze medalist. 30+ years teaching experience from Training through PSG. Shown through 4th. Continue training w/ many European trainers. Year-end awards with USDF, WDCTA, AQHA. Associates Degree in Equine Management. Travel for clinics. References available.

**BITTERSWEET FARM LLC**

**344 Ct. Rd. FF**  
**Picket, WI 54964**  
**920-589-2709**  
[bittersweetfarm@ntd.net](mailto:bittersweetfarm@ntd.net)  
 Classical dressage (Training thru 3rd), basic ground work. Experienced through 3rd level, USDF qualified rider, Perofmrnce Horse awards, judge 4-H shows, invovled with USPC, does clinics and will travel.

**JACKIE LUEBKE-PUETZ**

**Grand Prix Farm**  
**15034 Hwy. X**  
**Kiel, WI 53042**  
**920-693-3367**  
[cvestor@aol.com](mailto:cvestor@aol.com)  
 Ridden for 25+ years, trained with 4 Olympic riders, attend USDF convention, won WDCTA awards and Region 2 schooling awards, as have students. USDF Adult Program Region 2 chair.

**MEGAN MC ISAAC**

**Lindinhof Equine Sports Zentrum**  
**4246 Schneider Drive**  
**Oregon, WI 53575**  
**608-445-8531**  
[Lindinhof1@aol.com](mailto:Lindinhof1@aol.com)  
 FEI trainer. USDF Gold, Silver and Bronze medals and Freestyle Gold Bar. Competed successfully at Dressage at Devon in 2007. Multiple year-end award winner. Coached students to year-end awards, regional championships and their USDF medals. Will travel to give clinics. 10 years teaching experience, beginners thru GP. Grand Prix school horses available.

**PEN BRYN FARM, LLC**

**4321 State Road 138**  
**Oregon, WI 53575**  
**608-698-7924**  
[val@sporthorseprospects.com](mailto:val@sporthorseprospects.com)  
 Several on-site instructors willing to work with all ages, toddlers through 4th level dressage. School horses available. Instructors will do some travel and have references.

**SHELLY REICHAUT**

**Paradigm Farm**  
**N5834 Co. Rd. S**  
**Lake Mills, WI 53551**  
**414-881-1830**  
[paradigmfarmllc@aol.com](mailto:paradigmfarmllc@aol.com)  
 15 years of teaching experience, trained and shown through Grand Prix. USDF Gold, Silver and Bronze Medalist -- all earned on self-trained horses. Based out of Paradigm Farm, but will also travel for lessons/clinics.

**ANDREA SCHTEN**

**Hickory Grove Farm**  
**W336 S8510 County Road E**  
**Mukwonago, WI 53149**  
**262-470-4557**  
[aschten@hotmail.com](mailto:aschten@hotmail.com)  
 USDF Bronze and Silver Medalist. Regional championships - Training thru I-1 on self-trained horses. Accepting approved horses in training. Specialize in assisting amateurs move up the levels.

**NICOLE TRAPP**

**1207 White Sands Court**  
**West Bend, WI 53090**  
**920-960-6930**  
[trappnl@hotmail.com](mailto:trappnl@hotmail.com)  
 Competed thru 2nd Level, trained thru 4th. Evented thru Training. 15+ years teaching experience. Audited USDF Instructor Certification program. Passed USDF "L" Judge program w/ distinction. USDF regional/HOY breed awards. Lesson/ training programs to fit any budget. Will travel. School horses. Will start young horses.  
**KATE VAN SICKLEN**  
**Silver Spring Farm**  
**3031 Timber Lane**  
**Verona, WI 53593**  
**608-845-6630**  
[katevsh@tds.net](mailto:katevsh@tds.net)  
 British Horse Society Instructor. USDF "L" Program graduate with distinction. USDF Associate Instructor. USDF medalist, shown thru Prix St. George. 30+ years teaching experience. Will teach thru 4th Level. Specialize in teaching all riders and horses the correct basics. Will travel for lessons.

**JOANN WILLIAMS**

**Cambridge Farm**  
**W3580 Scotch Bush Rd**  
**Eikhorn, WI 53121**  
**414-378-2231**  
[jwcambridge18@yahoo.com](mailto:jwcambridge18@yahoo.com)  
 Offering classical dressage for every horse and rider. USDF Gold medallist on self-trained horse. Many students have Silver and Bronze. Multiple USDF regional winner. Travels for lessons/clinics.

**ANNE ZAHARIAS**

**Sentinel Farm**  
**W4769 Million Dollar Rd**  
**Menominee, MI 49858**  
**906-864-2790**  
[sentinfarm@mari.net](mailto:sentinfarm@mari.net)  
 USDF Bronze Medallist. Completed USDF Instructor Certification courses. USDF and Breed Championship titles at Regional, National and World levels. Experience with a variety of breeds. Will travel off site.

Continued on next page

**Breeder Listings**

**VALERIE AHL**  
 Pen Bryn Farm, LLC  
 4321 State Road 138  
 Oregon, WI 53575  
 608-698-7924  
[val@sporthorseprospects.com](mailto:val@sporthorseprospects.com)  
 Specializing in breeding world-class bloodlines including Lingham, Rotspan, Londonderry, Weltmeyer and Winterprinz.

**TRACEY DIKKERS**  
 Dundee Training Stable  
 N6482 Silver Road  
 Monticello, WI 53570  
 (608) 938-2410  
[dundee@tds.net](mailto:dundee@tds.net)  
 Warmblood/warmblood crosses, young stock usually available.

**SHANNON E. LANGER**  
 Maple Run Farm LLC  
 W3465 Market Road  
 Helenville, WI 53137  
 (920) 674-6344  
[maplerunfarm@yahoo.com](mailto:maplerunfarm@yahoo.com)  
 Hanoverians of exceptional quality. Bloodlines include Ampere, Bordeaux, DeNiro, Diamond Hit, Rohdiamont, Royal Prince, Sir Donnerhall, Sinatra Song, Fidertanz, Pablo, Winterprinz and Weltmeyer.

**JACKIE LUEBKE-PUETZ**  
 Grand Prix Farm  
 15034 Hwy. X  
 Kiel, WI 53042  
 920-693-3367  
[cvestor@aol.com](mailto:cvestor@aol.com)  
 Too Cute To Shoot, Welsh Section B, multiple breed championships, WI State Horse Council Championships winner, bay, Farley bloodlines.

**STEPHANIE SEVERN**  
 HOPEFUL FARM SPORT HORSES  
 4595 Mahoney Road  
 McFarland, WI 53558  
 (608) 213-8925  
[hopefulfarm@gmail.com](mailto:hopefulfarm@gmail.com)  
 Breeders of quality German Oldenburg, Westfalen, RPSI and Dutch Warmblood sport horses since 1993. Horses for sale.

**Business Listings**

**RETAIL BUSINESSES**

**COMPETITIVE EDGE BODYWORK**  
 Nicki Butler  
 9 Wakeman Street  
 Madison, WI 53705  
 608-358-2589  
[findawayfarm@yahoo.com](mailto:findawayfarm@yahoo.com)  
 Competitive Edge equine body work: massage, Reiki, myofascial release, ESMT certified -- Keys to mutually enjoyable riding sessions with your relaxed, supple, symmetrically moving horse. 30 years experience with all breeds and levels.

**EXCALIBUR INSURANCE AGENCY**  
 800-617-2450  
[info@excaliburinsurance.com](mailto:info@excaliburinsurance.com)  
 Equine insurance - mortality insurance, farm owners insurance, instructors and trainers liability insurance.

**SHORTHORSE STUDIOS**  
 Heather K. McManamy  
 2421 West Hill Drive  
 Fitchburg, WI 53711  
 608-886-3764  
[heather@shorthorsetudios.com](mailto:heather@shorthorsetudios.com)  
 ShortHorse Studios is a photography company providing images beyond imagination of equines, pets and people. For more info, please visit [www.shorthorsetudios.com](http://www.shorthorsetudios.com).

**SPORT HORSE MARKETPLACE**  
 Anna Goebel  
 4826 South Hill Drive  
 Madison, WI 53705  
 608-232-2922  
 608-232-2922  
[sporthorsemarketplace.com](http://sporthorsemarketplace.com)  
 Quarterly sport horse magazine specializing in sport horses and ponies for sale, stallion and breeder services, and all goods and services for sport horse enthusiasts, and The Sporthorse Directory: annual stallion directory.

**TRAINING, STABLES & SHOW FACILITIES**

**BITTERSWEET FARM LLC**  
 Jennifer Kraemer  
 344 Ct. Rd. FF  
 Picket, WI 54964  
 920-589-2709  
[bittersweetfarm@ntd.net](mailto:bittersweetfarm@ntd.net)  
[www.bittersweetfarm.us](http://www.bittersweetfarm.us)  
 Family-owned boarding facility available for clinics and day schooling shows.

**SHELLEY DAY**  
 1324 S. 124th  
 West Allis, WI 53214  
 414-403-8491  
[sdaydressage04@yahoo.com](mailto:sdaydressage04@yahoo.com)  
 USDF Bronze & Silver Medalist;; USDF award winner; completed through I1 on self-trained horse. Have 25 years teaching & training experience. Will travel in WI & IL. School horses available.

**GOLDEN HORSESHOE FARM**  
 Angela Rabe  
 N4609 Hwy. 59  
 Monroe, WI 53566  
 414-617-6022  
[jedinight55@yahoo.com](mailto:jedinight55@yahoo.com)  
 Dressage lessons, school horses available. Training, boarding. Quality horses for sale, Friesian sport horses, clinics.

**HICKORY GROVE FARM**  
 Andrea Schten  
 W336 S8510 County Road E  
 Mukwonago, WI 53149  
 262-470-4557  
[aschten@hotmail.com](mailto:aschten@hotmail.com)  
 USDF Bronze and Silver Medalist. Regional championships - Training thru I-1 on self-trained horses. Accepting approved horses in training. Specialize in assisting amateurs move up the levels.

**LINDINHOF EQUINE SPORTS ZENTRUM**  
 Megan McIsaac  
 4246 Schneider Drive  
 Oregon, WI 53575  
 608-445-8531  
[Lindhof1@aol.com](mailto:Lindhof1@aol.com)  
 Lessons, sales and training. Tuesday thru Sunday. Open for lessons noon to 6 p.m.

**PEN BRYN FARM, LLC**  
 Valerie Ahl  
 4321 State Road 138  
 Oregon, WI 53575  
 608-698-7924  
[val@sporthorseprospects.com](mailto:val@sporthorseprospects.com)  
 Our combined breeding and boarding full-service facility offers one-on-one attention for you and your horse.

**SILVERWOOD FARM & SHOW FACILITY**  
 Lisa Froehlig  
 P.O. Box 192  
 Camp Lake, WI 53109  
 262-889-4700  
[www.silverwoodfarm.net](http://www.silverwoodfarm.net)  
 Boarding, rehab, retirement, dressage training and instruction. Host to multiple USEF-USDF-recognized dressage shows. Open 7 days a week, 6 a.m. to 10 p.m. Located 45 minutes south of Milwaukee and 1 hour north of Chicago.

**SUNFLOWER FARM !**  
 19000 - 128th Street  
 Bristol, WI 53104  
 262-857-8555  
[reinsman@aol.com](mailto:reinsman@aol.com)  
 7 heated barns, 3 indoor heated arenas, 3 outdoor dressage rings, 24-hr. security, 170 acres.

# WDCTA-SW 2011 Dressage Janet Foy Clinics

at Judd's Green Meadows Farm, 6412 County A, Belleville, WI 53508



October 21-23 -- Opening day September 9

Janet Foy is an "I" rated FEI judge, USEF "S" and Sport Horse Breeding judge. She has judged US and international FEI shows, including the NAYR Champs, Dressage at Devon, & USA World Cup League. She is a USDF L Faculty member and instructs Federation Judges. She is a USDF bronze, silver and gold medalist, having ridden horses to Horse of the Year Awards from Training to Grand Prix. Janet was a member of the USDF test writing committee, making her uniquely qualified to provide her students with insights to accurate test riding.

All rider applications must be **postmarked** on the "opening day" (see above). Riders will be selected on a first come basis with preference given to WDCTA-SW chapter members, followed by WDCTA members from other chapters. Refunds will be considered at organizer's discretion with receipt of veterinarian and/or doctor's certificate. Alternates will have first chance at open slots. *Tentative Schedule: Friday - Sunday 8:00 AM- 4:30PM.*

Rider Name: \_\_\_\_\_ Address: \_\_\_\_\_

City: \_\_\_\_\_ State: \_\_\_\_\_ Zip: \_\_\_\_\_ Phone \_\_\_\_\_

Email: \_\_\_\_\_

Horse's Name: \_\_\_\_\_ Breed: \_\_\_\_\_

Age: \_\_\_\_\_ Schooling Level \_\_\_\_\_ Showing Level \_\_\_\_\_

### **RIDER FEES:**

WDCTA Member: \$125/ride or \$65 for 3  Non-WDCTA Member: \$140/ride or \$420 for 3

TRAILER IN FEE: \$10/ride or \$25 for 3 (everyone pays except Judd boarders)

Ride time preference?  AM  PM (will try to accommodate) \_\_\_\_\_

Will you need a stall?  Overnight \*\*  For day\*\*  Just in and out

\*\*VERY limited availability & additional cost – organizer will contact you with options

**Negative Coggins required with application (if you board at Judd's, don't send.) All shots must be current.**

### **AUDITOR FEES:**

WDCTA-SW Chapter members – NO CHARGE!!

WDCTA member	1 day @ \$15 _____	2 days @ \$25 _____	3 days @ \$30 _____
Non-WDCTA member	1 day @ \$20 _____	2 days @ \$30 _____	3 days @ \$35 _____

Attending:  Friday  Saturday  Sunday

Includes coffee/water/soda and snacks. Bring your own lunch and chair!

Rider / Auditor Fee \$ \_\_\_\_\_

Trailer in Fee \$ \_\_\_\_\_

TOTAL ENCLOSED \$ \_\_\_\_\_

**Make checks payable to:** WDCTA Southwest Chapter

**Mail to organizer with check & 2011 Coggins:**

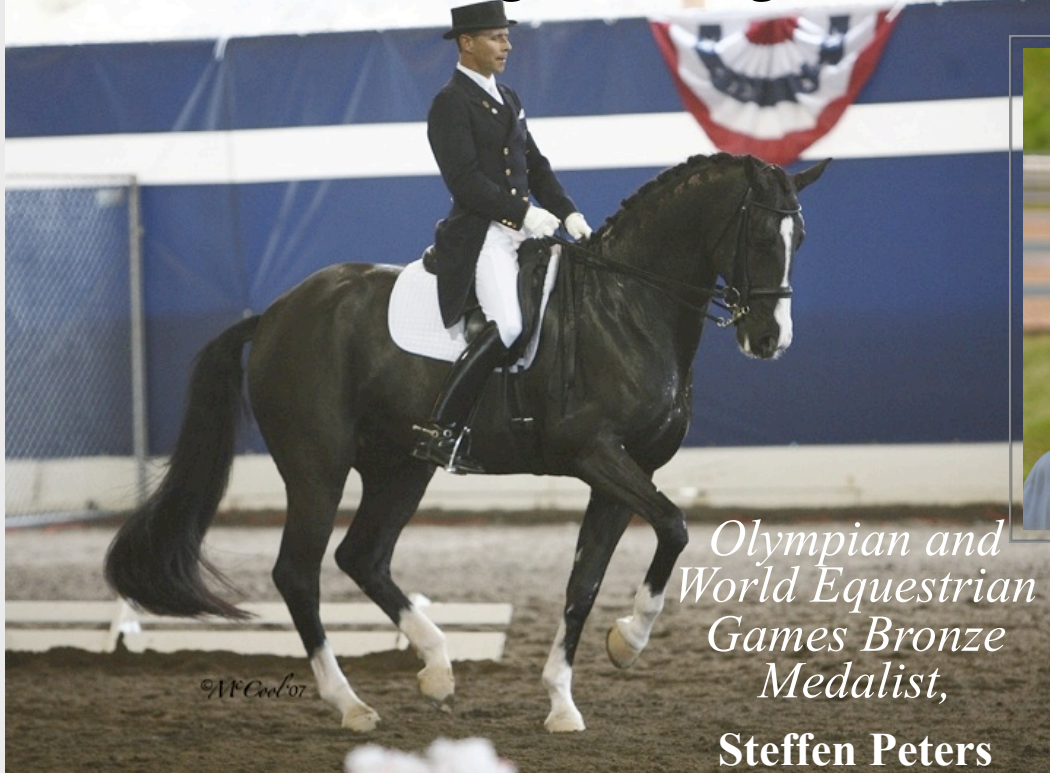
Mary Hanneman, N8160 Smith Rd, Brooklyn, WI 53521  
608-712-0975 or mahanneman@gmail.com

**Questions?**

# Steffen Peters

Returns to Wisconsin on Nov. 19 & 20 for

## “Dressage Through The Levels”



*Olympian and  
World Equestrian  
Games Bronze  
Medalist,  
Steffen Peters*



**International  
FEI judge,  
Janet Foy**

Together, Steffen and Janet will work with more than 20 riders and their horses as they demonstrate moving up the dressage levels, from the basics at Training Level to Grand Prix — the level ridden at the Olympics.

Join us for a fun and educational weekend, plus shop ‘til you drop at the trade fair, at Sunflower Farms in Bristol, WI ([www.sunflowerfarms.com](http://www.sunflowerfarms.com)).

For details, visit the WDCTA website at [www.wdcta.org](http://www.wdcta.org), call (608) 455-1037 or email [mahanneman@gmail.com](mailto:mahanneman@gmail.com).

**Auditor Registration** (Complete and mail in this form \* 1 person per form)  
\*Sorry, no refunds\*\* \*

**Early Reservations (postmarked before 11/11/11)**

**WDCTA Member:** \$100/2 days or \$60/1 day) - includes snacks and lunch

**Non-WDCTA Member:** \$150/2 days or \$85/1 day - includes snacks and lunch

**Reservations (postmarked after Nov. 11 or at the door)**

**WDCTA Member:** \$125/2 days or \$85/1 day - no lunch provided

**Non-WDCTA Member:** \$175/2 days or \$110 day - no lunch provided

Auditor Name \_\_\_\_\_ Phone \_\_\_\_\_  
Address \_\_\_\_\_ Email \_\_\_\_\_  
City \_\_\_\_\_ State \_\_\_\_\_ Zip \_\_\_\_\_

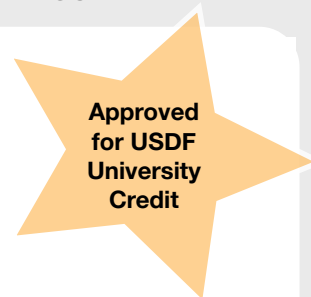
\*Saturday Lunch: \_\_\_ Meat \_\_\_ Vegie \*Sunday Lunch: \_\_\_ Meat \_\_\_ Vegie

FEES ENCLOSED: \$ \_\_\_\_\_ Attending one day, which day: \_\_\_ Sat. \_\_\_ Sun.

Mail form with check (made out to WDCTA-Southwest Chapter to:  
Donna Thomas, 5996 Co. Rd. A, Brooklyn, WI 53521

Questions, contact Donna at 608-835-8549 or [stablewoman@hughes.net](mailto:stablewoman@hughes.net)

W-H-C Event organized by WDCTA's Southwest Chapter



WISCONSIN  
DRESSAGE  
& ET  
ASSOCIATION, INC.



# eQuester Advertising Rates



### Mechanicals:

Ad size below. Photos should be submitted as jpegs. Or, mail to editor for scanning. Include self-addressed, stamped envelope for its return.

### Deadline:

All calendar submissions, ads and payment must be received by the 15th of the month prior to publication. Make checks out to WDCTA.

**WDCTA members receive special rate (in **ORANGE**).**  
**See calendar information at bottom of page.**

### Editor Contact Info:

Caryn Vesperman  
[newsletter@wdcta.org](mailto:newsletter@wdcta.org)  
W1619 King Road  
Brooklyn, WI 53521

Description	1 x	6 x	12 x
<b>Business Card</b> 3.5 x 2": In <i>eQuester</i> newsletter with link to email OR website.	\$10 ( <b>\$9</b> )	\$50 ( <b>\$45</b> )	\$100 ( <b>\$90</b> )
<b>Classified Ad</b> Up to 50 words. In <i>eQuester</i> newsletter with link to email OR website.	\$5 ( <b>\$4</b> )	\$25 ( <b>\$20</b> )	\$50 ( <b>\$45</b> )
<b>Quarter Page</b> 3.5 x 5": In <i>eQuester</i> newsletter with links to email OR website.	\$15 ( <b>\$12</b> )	\$85 ( <b>\$70</b> )	\$150 ( <b>\$135</b> )
<b>Half Page</b> 7.5 x 5" or 3.75 x 10": In <i>eQuester</i> newsletter with links to email AND website.	\$20 ( <b>\$15</b> )	\$100 ( <b>\$90</b> )	\$195 ( <b>\$175</b> )
<b>Full Page</b> 7.5 x 10": In <i>eQuester</i> newsletter with links to email AND website.	\$40 ( <b>\$35</b> )	\$150 ( <b>\$175</b> )	\$300 ( <b>\$350</b> )
<b>Website Banner Ad</b> 180x150 pixels, and can be a .jpg, .gif or .png	N/A	\$200 ( <b>\$150</b> )	\$400 ( <b>\$300</b> )

**eQuester and Website Calendar of Events Submissions:** *For WDCTA members only. (Up to 20 words).*

INCLUDE THIS: Date > Event > Location > Contact (Name/Phone/Email) > WDCTA-Sponsored Event (Yes/No)

**WDCTA Event:** Link to organizer's email and registration form, if applicable

**NON-WDCTA-Sponsored Event:** Link to organizer's email only