



DECEMBER 2011

EQUESTER

A monthly publication of the Wisconsin Dressage & Combined Training Association

President's Message

Through the Levels was... Through the Roof!

Pam Doolittle

As a member of the Southwest Chapter of our great organization, I've been hearing about the "Through the Levels" symposium for several years. So when I was packing up myself and Contigo, it seemed surreal that the weekend was finally upon us.

And then...WOW! Every aspect of the weekend exceeded any expectations I had for the event!

Steffen Peters and Janet Foy were entertaining, sincere and extremely helpful and productive teaching us the training versus the judging aspects of each level.

The program, designed by Caryn Vesperman, allowed us to learn fun details about the riders and horses. Volunteers were friendly, efficient and went beyond the call of duty in many cases to insure a quality experience for spectators, riders and other volunteers.

The facilities at Sunflower Farm were top-notch, and its staff stood at the ready to problem-solve, assist and direct. The attendance—unprecedented!

Registration chair, Donna Thomas, reports the final attendance (including spectators, volunteers, riders, vendors and sponsors) exceeded 375 people! Attendees received a goodie bag filled with information and samples from our sponsors. All the riders received an amazing collection of gifts in a bucket which included people treasures and horse treats, provided by Saddler's



Pam's view Sunday morning at the symposium shows standing room only as Joann Williams and Gallod Ffantastic work with Janet Foy on test movements.

Photo by Pam Doolittle

Row. Our generous sponsors provided great items for the silent auctions, as well as interesting displays for everyone to experience and learn more about their products and services. (See page 4 for a list of sponsors.)

Steffen Peters reported that the WDCTA symposium was the best organized and provided the best examples of good horses and riders out of all the symposia he and Janet have taught so far.

I want to extend a huge thank you to the core organizing team and other volunteers who orchestrated this event. (See their names on page 4 too.) If you know them, please take a moment to thank them for their support! I am so appreciative of the volunteers, sponsors, vendors, riders and everyone else who helped us make this

event a reality. Thank you to all who attended! And, thanks to everyone who introduced themselves and shared with me stories of your equine partners. I really enjoyed meeting all of you.

I want to extend a very special thank you to Mary Hanneman, WDCTA organizer extraordinaire. I honestly do not know anyone with a more kind, calm and patient heart. She can diffuse any situation. She can think quicker on her feet than anyone I know, and can find humor, productivity and a positive outcome in anything. She is a tireless volunteer for WDCTA! Besides the symposium, she's organized all our Janet Foy clinics, the 2011 WDCTA annual educational conference, and at the same time, carries a full-time job, manages her farm and, of course, makes time for her wonderful equine partner, Phoebus. I am

Continued on next page

President's Column...continued

so grateful for everything you've done for our club, Mary. "Thanks" is a really small word to express how much I appreciate your help!

For those who couldn't make it, I'm happy to report that DressageClinic.com will air the entire symposium on its educational website starting sometime in January. As a 2012 WDCTA member, you'll receive a 30-day free trial membership. I hope you get a chance to watch and learn, especially in January, when riding is not always a pleasant experience. Andreas Stano, the executive director, has great ideas for future projects DressageClinic.com and WDCTA will collaborate on, so stay tuned! An article with pictures of this event will be in the January *eQuester*, thanks to Caryn. (See a sneak preview on page 5 of this issue.)

In Other WDCTA News...

I'm happy to report our bylaws revisions have been approved by the membership! The changes we've made have modernized the way the state board can conduct business (including electronic voting and communication). They provide chapters more flexibility in how they run their programs, and they clarify our overall organizational mission.

I'm attending the USDF Annual Convention and Symposium where the Board of Governors will once again discuss and vote on a National Championship. (See the article by Janet Foy in the June 2010 *eQuester*.)

USDF President, George Williams, says, "The concept of a national championship has been around for at least as long as our current Regional Championship program."

Until now, for various reasons the timing for a championship of this nature has not seemed right. We were appropriately cautious in 2008 when there was tremendous economic uncertainty. In general, especially globally, there still is uncertainty today. But, as I pointed out in my October 'Inside USDF' column, participation in our Regional Championship program has remained relatively stable over the years despite the economy. I believe now the timing is right. If we don't start now we will be ignoring the long-term promise made to regional championship participants, who indicated their support of going forward. This championships can give a boost to our sport by creating interest and providing additional goals for competitors."

I support this concept and will say yes should it come to a vote. I always appreciate your insights and concerns, members. So if there are national issues you have a strong position on, please email me at president@wdcta.org.

This is my last message to you for 2011. Let me close this message, members, by thanking you for the opportunity to serve as your president for the past two years. I began my job in a challenging climate two years ago. With the support of friends, family, volunteers and members who are dedicated to the overall improvement of our sport, WDCTA remains the largest GMO in Wisconsin. It has been my pleasure to serve you! Best wishes for a wonderful holiday with friends, family and horses.

And may you be blessed with many happy hours in the saddle!

A Winter Wonderland...Coming Soon!



Photo by Mark Vesperman

WISCONSIN
DRESSAGE
& CT
ASSOCIATION, INC.

WDCTA Members are
Group Members
of the
United States Dressage
Federation

**WDCTA is Wisconsin's
oldest and largest GMO**

Editor

Caryn Vesperman
(608) 455-2208
newsletter@wdcta.org
W1619 King Road
Brooklyn, WI 53521

All advertisements, articles and photographs (with photo release) should be submitted electronically to the editor by **the 15th of the month**, with payment for advertisements postmarked no later than the 15th. Ads and calendar of events submissions will appear in both the *eQuester* and on the website.

Advertising rates and requirements are under Forms on www.wdcta.org.



Charter

GROUP
MEMBER
ORGANIZATION

On The Bit

Caryn Vedsperman
eQuester Editor

I actually breathed!

When showing or performing, I usually get a case of nerves, which has gotten better over time. The “Through the Levels” symposium has to be the biggest audiences I have ever ridden in front of, and...I actually breathed. I was not as nervous as I have been in other situations in the past, with even fewer people on the sidelines.

I think this was because I was so focused on being a calming presence for my five-year-old gelding, Rapazzini. And for the most part, “Robby” breathed too. He didn’t exhibit any of his

Lambeau Leaps, which he has exhibited under stress, and while he had a couple of juvenile-delinquent moments of mini-bolts and, conversely, not going forward at all, I was pleased with how he handled the banners, tables and nearly 400 people-packed bleachers, all in stride. (Pun intended.)



Salope, being the professional that she is, did what I asked at the symposium. The mistakes made were all mine. Every ride I get on this wonderful, almost-23-year-old mare is a gift. I have told myself that the day she says, “I’m done,” I can accept it, with much gratitude. But about a month before the symposium, I discovered, the truth is, I’m not *really* ready for that to happen.

Until about two years ago, “Sally” had never had a hock or stifle injection—which is quite amazing for *any* 23-year-old horse, let alone one that can still do all the Grand Prix movements. About a month before the symposium, Sally became sore in her back. I took her to see my friend and trusted “Sally advisor,” Doug Langer, DVM, who assessed and treated her. When I rode her for the first time two days later, she felt perfect.

My reaction? I promptly burst into tears.

You see, in my head I will understand when the day comes that she needs to retire, but in my heart, I know I won’t be ready to give up my riding partner. Selfishly, I know I will never have a horse like her again.

But as long as she presses her head against the bars and has an ugly look on her face when I tack up another horse first, and as long as she feels good under saddle and is happy to do her job, I will continue to soak up every single lesson she can still teach me.

She has, forever and always, worked her way through the levels of my heart.

Happy Holidays!

The Ultimate Educational Experience DressageClinic.com

New Videos Every Week

Also Available on DVD

Featuring the world’s most celebrated professional dressage trainers, presenting online “reality” training sessions sharing their lifelong experiences in the training of dressage horses and riders.

EXCLUSIVELY FEATURED TRAINERS

Elizabeth Ball	Sharon McCusker
Klaus Balkenhol	Cesar Parra
Hans Biss	Shannon Peters
Heather Blitz	Steffen Peters
Ellen Bontje	Anja Plönzke
Leonie Bramall	Daniel Ramseier
Jan Brink	Leslie Reid
Volker Brommann	Penny & Johan Rockx
Jan Brons	Mette Rosencrantz
Hartwig Burfeind	Ulla Salzgeber
Hilary Clayton	Jane Savoie
Kathy Connelly	Nathalie Wittgenstein
Shannon Dueck	Hubertus Schmidt
Jan Ebeling	Conrad Schumacher
Pam Goodrich	Guenter Seidel
Hubertus Zedtwitz	Jeremy Steinberg
Lendon Gray	Betsy Steiner
Markus Gribbe	Monica Theodorescu
Jane Hannigan	Christine Traurig
Christoph Hess	Leunis van Lieren
Bo Jena	Rien van der Schaft
Heike Kemmer	Felicitas von Neumann
Ingrid Klimke	Bill Warren
Michael Klimke	George Williams

© Sharon Packer

THE GREATEST STRENGTH OF A RIDER IS EDUCATION



Blue-Ribbon Sponsors and VolunTERS for “Through the Levels” Symposium

Gold

Chronicle of
the Horse
Dressage Today
DressageClinic.com
Purina
Saddlers Row

Silver

Guardian Bedding
Schleese Saddlery
ShortHorse Studios
Wisconsin Horse Council

Bronze

Custom Saddlery
Lodi Veterinary Clinic
Maple Run Farm
SmartPak

Other Sponsors

BF Royal Canvas
Bill’s Food Store
Bruce Company
CountryView Vet Clinic
Cowboy Magic
Crown Jewel Designs
Dover Saddlery

Draper Therapies
Fiebing’s Horse/Leather
Care Products
LubriSyn
Midwest Breeders Group
NutraMax
Padded Ponies SaddlePads

Plum Lake Dressage
Rein-Aid
Spirit Plus Nutrition
Straight Arrow Products
Stud Muffins
Sycamore Hill
Winchester Pottery

Volunteers

Core Organizing Team

Mary Hanneman - *Event Chair*
Becky Bebbler-Wells
Diane Brault
Dena Duncan
Sue Genin
DeAnn Howard
Heather McManamy
Jenni Poole
Chet Thomas
Donna Thomas
Caryn Vesperman

Weekend Warriors

Elaine Burkhart
Nicki Butler
Marie Caldwell
Liz Carroll
Ruth Crennell
Tracey Dikkers
Pam Doolittle
Kathy Faccio
Sophie Fiedler
Betsy Freiburger
Angela Genin
Theresa Kiedinger

Tessa King
Ingrid Krause
Doug Langer
Haley Madden
Andrea Mitchell
Sheri Reichart
Stephanie Severn
Judy Shewmake
Cathy Stagmer
Laura Voll
Susan Walsh

Sneak Peak at “Through the Levels” Symposium

Next month, an article featuring reactions from auditors, volunteers and riders -- plus photos from the official symposium photographer and WDCTA member, Heather McManamy of ShortHorse Studios.

Clockwise from right: * Inside Saddlers Row, the tack shop—and Gold sponsor of the symposium—is located on the grounds of Sunflower Farms. * Many gift ideas were on display in the Saddlers Row store. * At the trade fair in the barn attached to the arena, Natalie Sauner from Schleese Saddlery—Silver sponsor— talks with WDCTA member, Elaine Burkhart. * Birds’ eye view of the trade fair in the barn. * Inside the arena showing the bleachers stretching down one entire long side, seating nearly 400 auditors and riders.
-Photos by Diane Brault



BITS 'N PIECES

WDCTA Member Seriously Injured



John Schneider was involved in a riding accident in late November, starting a young horse. He broke his back and is scheduled for two surgeries, one to remove bone fragments and the other to fuse the vertebrae, L2, 3 and 4. The good news is, John is not paralyzed and seems in good spirits. John used to be a former student of JJ Tate's.

JJ is spearheading a fund-raising drive on behalf of John. She asked that those who want to make contributions to help cover his medical bills should make checks out to John Schneider, but mail them to

her at: 13833 Wellington Trace E4-222, Wellington, FL 33414. JJ will gather all the funds and cards and send them on to him.

Communicate "Face" to "Face"

Keep up with news, ask questions and chat with members on the WDCTA Facebook page. Go to Facebook and search under Wisconsin Dressage & Combined Training Association. See you there!



Time to Renew Your Membership and Stable, Instructor, Breeder and Business Listing

Now you can join or renew your membership or your advertising listing easily! Go to the WDCTA website and either download a membership and SIBB listing and mail in with your check or renew online through PayPal. It can't get much easier to stay a member or promote your business! This will be your last issue if you don't renew.

Calendar of Events: Let People Know!

A popular feature in the newsletter is the calendar of events, and it's available exclusively to members! (The exception to that is the calendar does include USDF/USEF shows and WDCTA-recognized schooling shows) Send in your chapter or personal events! Keep other members in-the-know and able to plan ahead.

2011 WDCTA Chapter Officers

Eastern

President - [Tara Ragatz](#) (414) 331-4775
Vice President - [Paula Rush](#) (414) 870-1320
Secretary - OPEN
Treasurer - [Jennifer Callies](#) (262) 339-4775

Kettle Moraine

President - [Martha Flury](#) (262) 723-2656
Vice President - Nancy Lightfield
Treasurer - [Joann Williams](#) (414) 378-2231
Secretary - [Kathy Weishampel](#) (262) 719-8438
Representative - [Joann Williams](#) (414) 378-2231

Southwest

President - [Donna Thomas](#) (608) 835-8549
Vice President - [Sue Genin](#) (608) 882-6580
Treasurer - [DeAnn Howard](#) (608) 882-4196
Secretary - [Caryn Vesperman](#) (608) 455-2208
Representative - [Pam Doolittle](#) (608) 644-9423
Alt. Rep. 1 - [Stephanie Severn](#) (608) 835-1820
Alt. Rep. 2 - [Heather McManamy](#) (608) 886-3764

Upper Peninsula

President - [Karin Steffens](#) (906) 346-6497
Vice President - [Anne Zaharias](#) (906) 864-2790
Treasurer - [Tracee Horn](#) (920) 346-3624
Secretary - [Judi Izzi](#) (906) 384-6955



Coeur de Rouet HF—4yo Oldenburg Verband mare (Balou de Rouet—Coriander). Suited for jumping or dressage, has Grand Prix horses on both sides of her family! Ready to start under saddle. \$17,500.
www.hopefulfarm.com
608-213-8925

KPWN, Oldenburg, and TB sporthorses for sale including yearlings, 2yos, training level horses and broodmares. Visit our website for current pictures, updated videos and more information.
www.WrenwoodStables.com
210-508-1112



Lyrical— Oldenburg Verband mare by Royal Dance. Wonderful to ride, schooling First and Second Levels. Very sweet, easy to handle, wonderful to ride, very smooth gaits. \$20,000
www.hopefulfarm.com
608-213-8925



All the horses here are offered by members of Midwest Breeders Group. For horse sales, stallion, and membership information, visit us on the web at BreedersGroup.com or call 608-213-8925

Cheesehead Puissance

by Nicki Butler

This is a story from long ago, when I lived “up North,” was young, foolish and fortunate enough to have a long-suffering, hard-working, talented and forgiving horse.

I'm about to move back to Madison and city life, so I decide to take Snoball out for one last long trail ride on a sunny fall day. I figure it was a good way to enjoy the countryside one last time and mellow my horse out for his trailer ride in the morning.

No one to ride with? No problem. We saddle up and go down the road. We head to the abandoned gravel pit, our usual hour ride through fields and some scattered woods. I decide to take a longer ride today and follow the roadside for another 45 minutes, mostly walking, with a little trot...no need to over-tire the horse! Ok, finally I sigh and turn around.

SNORT! My horse gets “back-to-the-barn-itis” big time, and accelerates smoothly to a strong canter in the space of 10 feet.

I haul on his face. He shakes his head violently (as well he should, I can proclaim from my vastly superior knowledge at this time...) and hits standardbred-road gait. (Okay, he says, I'm trotting, see?) Sneaks into canter. Accelerates again. I wrestle him back again to a mere screaming trot. Repeat. Frustration. Gee, he will NOT slow down for more than a few strides no matter how hard I pull on the reins. (I remember the up-north training motto, “Ya oughta have a bigger bit on that horse.”)

We're next to a field full of freshly harvested round hay bales. I ride him into the field to try riding circles. I had read somewhere that this is a good way to slow your horse down. We do peculiar ovoid shapes with acceleration and veering towards the magnetic barn. I begin to fear we will reach light speed if I point him directly for home again. I need to convince him to listen to my whoa aids!

No arena walls to run into to get the point across. We circle a round bale. I get a great idea. I turn him towards a bale and assume the MAXIMUM DRIVING POSITION. We canter towards the bale. He wavers a bit from side to side. (“Um,”



Nicki Butler on the eager-to-jump Snoball. Here, at least, was an official jump at Fortuna Farm, Minnesota.

he seems to say, “you know there's something in the way there?”) I insist on centered and straight. By golly, we're going to hit that sucker head on and get whoa through your head!

He focuses on the center of the bale. We get closer. The shadow of the bale encloses us. I am still driving hard. He seems to be sitting down while he moves forward. I think, what an odd sensation, it's almost like....his head and neck and then forelegs and shoulders come up.....he's going to....(his haunches drop and shove into the ground so hard I feel like I'm on a catapult)....JUMP IT!!

I realize my take-off position is not ideal. I throw myself up his neck as we achieve lift-off. We are high up in the air. I extend both arms now to let him use his neck. I hear hay scraping the girth. My brain offers a snapshot of the horse stuck on the round bale with two legs dangling on each side. We start to come down. His front-end disappears. I see hay stubble and sunlight. His hindquarters would push me forward on the way down if I wasn't already nearly on his head.

We hit the ground almost simultaneously. My weight lands on his neck, he gets knocked to his knees. I fall off.

He snorts and stands up. I stand up and brush off my hands and knees. We look at each other. The bale top is over my

head. I pick up the dangling reins, check his legs for damage, apologize for being an idiot, remount and ride home at a big swinging walk. On the buckle. Hmmm.

What I thought about on the way home was, “How is it that I can drop the reins and have him walk calmly, but if I pick up the reins, he starts to jig and then pull and accelerate?”

In our eventing life during “Phase 1,” Snoball became locally known as “Avalanche” due to his tendency to gallop strongly and pull like a train, culminating with our jumping *through* the infamous Market Table jump at Thistle-downs in Verona, WI (but that's another story).

In “Phase 2,” the foolish human figured out that (1) pulling on 1,200-pounds of a running horse is stupid and ineffective. (Ha! Ha! Puny human!), and (2) by doing the most apparently insane thing possible —letting go of the reins, one could negotiate a reasonable compromise between running too slow for him and too fast for me.

We came to an agreement. Any long stretch of space between fences was obviously for galloping. After a good run, he would graciously come back to a mere 450 meters-per-minute and use jump radar to lock onto the next fence.

A Clinic with Robert Dover

By Renee Kempf McKinley

Wyngate Equestrian Center was the host facility for a clinic with Robert Dover, Oct. 15 and 16. Like many of us, I hesitated at first by the cost for auditing, but in the end, I was glad I attended. As an educational experience, it was money well-spent. The clinic was very well organized, sponsors hosted both breakfast and lunch, and a wonderful cocktail party, lecture and silent auction was held Saturday night.

Concepts and Exercises

On Saturday, I would have to say the theme of the day's teaching would probably be the half-halt and its importance in bringing the horse forward and back in not only his longitudinal/horizontal frame, but also in the vertical frame in which the half-halt engages the horse and creates collection.

An exercise Robert used to explain this longitudinal expansion and contraction as well as the status of the frame, how high, how short, was in what he called the "rubber band" exercise. On a 20-meter circle, Robert had the riders half-halt and really engage the horse over the center-line for three strides, again at A for three strides, and lengthened the stride on the two long sides of the circle. He explained it was like letting an accordion in and out, expanding and contracting. For the half-halt, he asked the riders to breathe in for the three strides of the short side of the circle, and exhale for the lengthening of frame for the long side of the circle.

Another point Robert made with some of the riders regarded contact. The horse must move into the contact the rider determines and carry on in that established frame with energy. He wanted to see a steady connection without the horse nodding its head, losing energy, becoming heavy or pulling. When keeping this steady contact in extensions, sometimes the horse would tend to get heavy, run away with the rider or pull the rider out of the saddle. Robert reminded the riders to breathe in, half-halt, hold that half-halt for three strides or less if the horse comes through, and repeat as necessary until the horse gives and achieves throughness in the contact. Giving the half-halt for only three strides and giving the horse a moment without



Robert Dover explains a training concept to the clinic auditors in October at Wyngate Equestrian Center.

half-halt, and then repeating the half-halt again and again until the horse learns to move into this steady contact prevented the situation where either the rider or the horse becomes too heavy or pulling, but at the same time, the horse learns to accept the steady contact.

Another subject was energy. Robert pointed out, "No energy, no collection." He described the horse and rider as a moving sculpture. He said you need to feel at the gut level in collected walk that all gaits are available to you, that you could effortlessly "feel" the passage, piaffe, canter and extensions all inside of the energy of that collected walk. He explained if you don't feel the ability to "half-halt and go" in the collected walk, you are not truly in the collected walk. You must have the energy all stored up and ready to effortlessly come forth from the lightest aid. Notions of collection and extension should likewise be very close to one another, separated only by a half-halt. In the collected walk, the energy should be bubbling over, waiting to be released into that "moving sculpture."

Robert also explained to the audience how important it is to have a vision of what you want, a "movie" or a picture of what you want in your head that goes

beyond words. In order to see beyond mediocrity to grandness, a mental image is needed. The word, piaffe, is nothing compared to the vision of the perfectly executed piaffe, with lightness, rhythm and harmoniously flowing energy. Likewise, an effective half-halt must also be your picture, your movie, not a physical description in words. Robert made everyone laugh when he said that most of us ride around in our horse's movie and not our own.

Educational "Happy Hour"

After the clinic, everyone headed to The Abbey in Lake Geneva for a cocktail reception and silent auction. We were pleasantly surprised when Robert stood up and told us had he known there would be so many auditors, he would have planned an hour lecture before the clinic, but if everyone was willing, he would like to do it right then. Everyone applauded, so he gave us an hour of education.

Robert began his lecture describing three basic principles he believed should be followed once a horse is backed to ride.

Continued on next page

Robert Dover Clinic...continued

Number One: Go forward.

There are three natural driving aids: The two legs and the seat. He told us a way to make an educated guess on whether an aid is actually an aid is by virtue of the fact that the aid by itself must be able to create the quality which we desire in the horse. This is why the hands would not be considered a driving aid.

The legs, of course, are the obvious driving aid. The seat becomes a driving aid when we breathe in, creating energy, oxygenating us, forcing our shoulders back and our muscles into tension. He explained how this is a common thread in many sports and activities, such as deep-sea diving or opera singing, where the participant takes a deep breath before he dives or belts out a song. By taking our deep breath, we are creating the energy to move the horse forward.

Number Two: Straightness.

Straightness is created and maintained through the bending aids. In order to go straight, the horse needs to be able to bend. The three natural bending aids are the two legs and the inside rein. The two legs negotiate the horse's body bend, and the inside rein bends the horse's neck so the bend goes from the horse's nose to tail.

Number Three: The Outside Rein as an Aid of Opposition.

While we are driving the horse forward, the outside rein controls both speed and bend. When the horse yields to the outside rein, we should relax it. That does not mean let it go slack, but relax the outside hand so the horse gets a reward for relaxing his feel on that rein and understanding its function.

This principle regulates number one and two. When you combine one through three, you get rhythm, regulated tempo, bending and straightness.

It ended up being a great clinic with very nice riders and exceptional horses. Robert was very complimentary regarding everyone's effort, and he was helpful and insightful without diminishing anyone's riding or the existing issues with his or her horse.

Wyngate and Elizabeth Poulin did a nice job organizing and hosting,

everything was well planned and friendly. I came away with a lot of helpful information that I can use in my everyday riding. And the one thing I won't forget to do is.... BREATHE!

ROBERT DOVER CLINIC LINE-UP

Anne Cizadlo riding her horse Luschi, a seven-year-old Oldenburg gelding competing at 4th Level, schooling PSG.

Patricia Gillian's horse Ebikur, ridden by **Nichole Smith**. "Elmo" is a 10-year-old Oldenburg gelding schooling Grand Prix under Nichole with Steffen Peters.

Amy Walker-Basak riding her horse, Wagner, a seven-year-old Dutch gelding competing at 3rd Level, schooling 4th/FEI.

Marilyn Black's horse, Raffetto, ridden by **Elizabeth Poulin**. Raffetto is a 10-year-old Hanoverian gelding competing at 4th Level, schooling FEI.

Joan Pecora riding her horse, Talent, an 11-year-old Dutch gelding competing at Int. 1.

Marilyn Black's horse, Rubin's Magic, ridden by Elizabeth Poulin. Rubin is a five-year-old Hanoverian gelding competing at 2nd Level and schooling 3rd.

Barry Fript riding his horse, Donner's Hit, a.k.a. "Stella," a seven-year-old Oldenburg mare schooling FEI.

Sally Rush riding her horse, Gracie, a six-year-old German Riding Pony competing at 1st Level and schooling 2nd/3rd.

Katherine Boldt riding her horse, Dream Dancer, a.k.a. "Dori," an eight-year-old Oldenburg gelding schooling PSG/Int. 1.

Lezlie Rehagen's horse, Leoluigi, ridden by **Patricia Becker**. "Leo" is a nine-year-old Hanoverian gelding who competed at Devon this year at int. 1.

Ashley Jacobson riding her horse, Three Times, an 11-year-old Dutch gelding competing at PSG/Int.1

Kiley Batina riding her horse, Signature, a five-year-old Oldenburg gelding competing at 1st and 2nd Level, schooling 3rd.

Christy Rettger riding her horse, Reminiscent, a five-year-old Thoroughbred gelding competing at 1st Level.

Gone Away... LOWELL BOOMER

Founder of the USDF



G. Lowell Boomer of Lincoln, Neb., died Sunday, Nov. 20. Lowell was born Oct. 12, 1911, in Burwell, Neb., to George and Grace Boomer. Lowell graduated from Lincoln High School and attended the University of Nebraska-Lincoln School of Music. While in high school, he won first place on the clarinet in a Lincoln Music contest playing "Concertino" by Weber. He then went on to win contests at state, regional and national levels. He played clarinet for many years in the Lincoln Municipal Band summer concert series in Lincoln, alongside his wife, Gladys, who played trumpet.

Lowell studied printing while in junior high school, and started a letter shop with a mimeograph and multigraph machine in his mother's Teachers Employment Agency. It grew to become Boomer's Printing Company, which Lowell would head as president for the next 80 years, at which time he sold the company to its employees.

His avocation had been a lifetime love of horses, and became internationally renowned in the equestrian world. He founded the United States Dressage Federation (USDF) in Lincoln in 1973, serving as Chief Executive Officer for 16 years.

Today, USDF is headquartered in the Kentucky Horse Park in Lexington, with more than 30,000 members nationally. In 1989, he established The Dressage Foundation in Lincoln "to cultivate and provide financial support for the advancement of Dressage."

Lowell won an extensive array of equestrian honors throughout his lifetime. He was the first inductee into the USDF Hall of Fame, and received the USEF (United States Equestrian Federation) Lifetime Achievement award. *The Chronicle of the Horse* named Lowell as "one of the 50 most influential horsemen of the 20th century worldwide."

Lowell was an active, lifetime member of the Lincoln Downtown Sertoma Club and involved with Sertoma's sponsorship of Cedars Home for Children when it was founded in 1947.

The family suggests Memorials to The Dressage Foundation, 1314 'O' Street, Suite 305, Lincoln, NE 68508 and/or Cedars Home for Children, 6601 Pioneers Blvd, Lincoln, NE, 68506.

Kettle Moraine Green As Grass Show II

Aug. 27 * Sorensen Equestrian Park * Judge: Nicole Trapp

Intro Test A

- 1 - Teri Foster, Movado 61.9%
- 2 - Dana Hongisto, Tea 55.6%
- 3 - Teresa Marcum, Diamond's Kentucky Gentleman 46.3%

Intro Test B

- 1 - Teri Foster, Movado 63.1%
- 2 - Dana Hongisto Tea 61.3%

Training Test 1

- 1 - Donna Thomas, Trina 64.6%

Intro Test A Gaited Horse

- 1 - Julie Levy, Heza Birthday Masterpiece 68.1%
- 2 - Jerome Lang, Dillon 64.4%
- 3 - Mary Jo Leveque, Raini 61.9%
- 4 - Sharon Thomas, Prime I'm it 58.8%

Intro Test B Gaited Horse

- 1 - Julie Levy, Heza Birthday Masterpiece 70%
- 2 - Mary Jo Leveque, Raini 63.8%
- 3 - Sharon Thomas, Prime I'm It 62.5%
- 4 - Jerome Lang, Dillon 61.9%

Intro Test C Gaited Horse

- 1 - Julie Levy, Heza Birthday Masterpiece 65%

Training Test 2

- 1 - Donna Thomas, Trina 64.6%
- 2 - Mary Jo Leveque, Delite's Easy Cash (Gaited) 63.6%
- 3 - Katie Johnson, Stormy Boy 62.9%
- 4 - Sandy Lippert, Pepper 59.6%

Training Test 3

- 1 - Donna Thomas, Trina 65.6%
- 2 - Jessica Smith Bagley, Niamh 65.2%
- 3 - Laura Voll, Osgaard 63.2%
- 4 - Annette Meints, Wiley 62.4%

First Test 1

- 1 - Annette Meints, Wiley 54.8%

First Test 1 Maiden

- 1 - Jessica Smith Bradley, Niamh 70.3%
- 2 - Laura Voll, Osgaard 61%

Dressage Equitation

- 1 - Mary Jo Leveque, Delite's Easy Cash
- 2 - Katie Johnson, Stormy Boy
- 3 - Jerome Lang, Dillon
- 4 - Sharon thomas, Prime I'm It
- 5 - Annette Meints, Wiley

WDCTA State Board

President

Pam Doolittle (608) 644-9423
president@wdcta.org

Vice President

Martha Flury (262) 723-2656
vp@wdcta.org

Secretary

Sue Genin (608) 882-6580
secretary@wdcta.org

Treasurer

Angela Genin (608) 516-2293
treasurer@wdcta.org

Historian

Anne Zaharias (906) 864-2790
historian@wdcta.org

Video Librarian

Donna Thomas (608) 835-8549
librarian@wdcta.org

Newsletter Editor

Caryn Vesperman (608) 455-2208
newsletter@wdcta.org

Members-at-Large

Stephanie Severn (608) 213-8925
mal1@wdcta.org

Chet Thomas (608)835-8549
mal3@wdcta.org

Nicki Butler
mal2@wdcta.org

Membership Recorder

Diane Brault (608) 924-1808
5184 County Road HH
Barneveld, WI 53507
membership@wdcta.org

Awards Recorder

Send forms to:
Rita Pulz
5593 Bellbrook Road
Brooklyn, WI 53521
awards@wdcta.org

Webmaster

Stephanie Severn (608) 213-8925
website@wdcta.org

Eastern President

Tara Ragatz (414) 331-4775
eastern@wdcta.org

Kettle Moraine President

Nancy Lightfield (262) 949-6945
km@wdcta.org

Kettle Moraine Representative

Joann Williams (414) 378-2231

Southwest Chapter President

Donna Thomas (608) 835-8549
sw@wdcta.org

SW Chapter Representative 1

Pam Doolittle (608) 644-9423
president@wdcta.org

SW Chapter Representative 2

Heather McManamy (608) 886-3764

Upper Peninsula President

Karin Steffens (906) 346-6497
up@wdcta.org

CALLENDAR

*A listing in the Calendar of Events is a service provided to WDCTA members only.
Send your submissions to newsletter@wdcta.org by the 15th of each month.*

WDCTA State & Chapter Meetings

Saturday, December 10

Southwest Chapter - 1 p.m.
Death by Chocolate holiday party
Date and location TBA

Saturday February 25, 2012

WDCTA State Board Meeting - 10 a.m.
At the WDCTA annual conference
Location - TBA

WDCTA Clinics & Events

Feb. 26 *(tentative, depending upon speaker availability)*

WDCTA Annual Conference & Awards Banquet
Save the date! More info to come.

Contact: Pam Doolittle (608) 644-9423
psdoolittle@yahoo.com

May 11-13

Janet Foy Clinic
Judd's Green Meadows Farm, Belleville, WI
Contact: Mary Hanneman * No auditing charge for
(608) 455-1037 SW Chapter members
mahanneman@gmail.com

July 6-8

Janet Foy Clinic
Judd's Green Meadows Farm, Belleville, WI
Contact: Mary Hanneman * No auditing charge for
(608) 455-1037 SW Chapter members
mahanneman@gmail.com

Aug. 10-12

Janet Foy Clinic
Judd's Green Meadows Farm, Belleville, WI
Contact: Mary Hanneman * No auditing charge for
(608) 455-1037 SW Chapter members
mahanneman@gmail.com

Sept. 7-9

Janet Foy Clinic
Judd's Green Meadows Farm, Belleville, WI
Contact: Mary Hanneman * No auditing charge for
(608) 455-1037 SW Chapter members
mahanneman@gmail.com

Oct. 12-14

Janet Foy Clinic
Judd's Green Meadows Farm, Belleville, WI
Contact: Mary Hanneman * No auditing charge for
(608) 455-1037 SW Chapter members
mahanneman@gmail.com

Shows

Remember, only USDF/USEF recognized shows or schooling shows designated as WDCTA-recognized are eligible for WDCTA year-end awards.

Stay Tuned!

Non-WDCTA Events

March 16-19

Alex Gerding Clinic
Touchstone Farm, Brooklyn, WI
Contact: Caryn Vesperman * No auditing charge
(608) 455-2208
touchstonefarm@gmail.com

May 18-21

Alex Gerding Clinic
Touchstone Farm, Brooklyn, WI
Contact: Caryn Vesperman * No auditing charge
(608) 455-2208
touchstonefarm@gmail.com

June 15-18

Alex Gerding Clinic
Touchstone Farm, Brooklyn, WI
Contact: Caryn Vesperman * No auditing charge
(608) 455-2208
touchstonefarm@gmail.com

Sept. 28-Oct. 1

Alex Gerding Clinic
Touchstone Farm, Brooklyn, WI
Contact: Caryn Vesperman * No auditing charge
(608) 455-2208
touchstonefarm@gmail.com

Nov. 30-Dec. 3

Alex Gerding Clinic
Touchstone Farm, Brooklyn, WI
Contact: Caryn Vesperman * No auditing charge
(608) 455-2208
touchstonefarm@gmail.com

Lindinhof thanks all our wonderful clients for their loyalty and commitment!

2011 was a wonderful year for the show team and individual progress!



Kapelen Photography Photo

"Jewel", owned by Sue & Rick Neipert of Meadow's Gait Farm, started and trained by Megan, performed at the Midwest Horse Fair, earned her Sport Horse Predicate, Midwest Champion at 1st & 2nd Level Freestyles, USDF Res Champion at 1st & 2nd Level Freestyles, USDF HOY 2nd Level Freestyle for FHANA. Debuted 3rd & 4th Level and earned a 77% at their 3rd Level Freestyle!!

Jen & "Milo"
Competed Training and First Levels. Next year, she plans to compete 2nd & 3rd Levels!



Kapelen Photography Photo



Rob Hess Photo

Madeline & "Alex"
Competed 1st & 2nd Levels on the Arabian Circuit and were Canadian National Champions!

Lisa & "Hughy"

In her first year of competing at recognized shows, competed successfully at USDF Regionals at Training Level and earned her Training Level patch!



Swan Studios Photo



Sarah & "Milo"
Competed at their first show at Hoofers!

Tami & "Boo"

Earned her USDF Bronze Medal and 2 scores towards her Silver! Onward to PSG in 2012. Tami started and trained her Boo herself with guidance from Megan.



EquipePhoto



Kapelen Photography Photo

Callie & "Gold"

Earned her USDF Bronze & Silver medals while she was taking a break from school. Now on to the Gold Medal!

Jessie & "Waltie": In her first year of competing at recognized shows, qualified for USDF Regionals at Training & 1st levels and competed at Training-4th levels. One score away from her USDF Bronze medal!



EquipePhoto

Thank you to Collin Gallagher, Farrier, Dr. Batker & Dr. Hirsbrunner, Country View Vets, Jeff Reeck with Sport Horse Massage, and Stacy Hockel with Equine Inspired, saddle fitter, who are also a big part of making the Lindinhof Team successful.

www.lindinhof.com • www.nodoubtmcisaac.com

lindinhof1@aol.com • 608.445.8531

Ad by Freestyle Graphic Design. Background images by www.ShortHorseStudios.com

MarketPlace

SportHorseProspects.com



Specializing in World Class Bloodlines

Pen Bryn Farm, LLC, Madison, Wisconsin

Owner: Valerie Ahl, Ph.D.

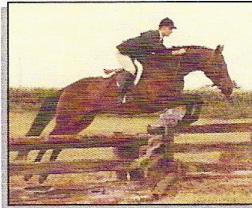
Sales Manager: Fiona Wilby

Phone: 608.698.7924

Email: Fiona@Wilby.com

Val@SportHorseProspects.com

Find your next Dressage/Eventing/Jumping partner horse here!!



**United States
Equestrian Federation**

"r" Recorded Judge

• Hunter • Hunter Seat Equitation • Jumper
SHARON956@HUGHES.NET

Sharon Johnson

Wisconsin Dells, WI 53965

608-253-7018

608-547-8814 Cell

• Lessons

• Clinics

• Equine Sports

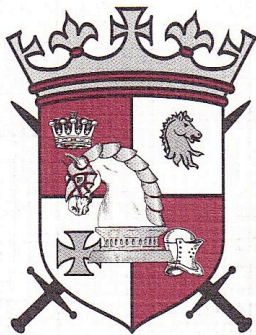
Massage

6/12



Proud Sponsor of WDCTA's Symposium
with
Steffen Peters & Janet Foy

EXCALIBUR
INSURANCE AGENCY



Equine Insurance

MORTALITY • FARMOWNERS • LIABILITY

Thomas C. Mikulice

800-617-2450

www.excaliburinsurance.com

Local: 262-367-2450 • Fax: 262-367-4250

P.O. Box 500 • Hartland, WI 53029



Saddlers Row is an
Approved Retailer by
the Society of Master Saddlers

Tack Repair & Restoration

Saddle Fitting

Riding Apparel

Saddles

Tack & Equipment

Stable Supplies

Horse Clothing

Horse Laundry & Repair

Saddlers Row
20066 N. Rand Rd., Palatine, IL
(847) 776-6700

Saddlers Row North
1800 128th St., Bristol, WI
(262) 857-2444

SaddlersRow.com

12/12

MarketPlace

More time in the saddle. Less time in the stable.

When choosing horse bedding it pays to get the facts.



Visit our website to learn about:

- ~ Health and safety of 100% pine bedding (Risk of hardwood and green shavings)
- ~ Low Dust—made specifically for equine and human health
- ~ True volume labeling—why larger bags don't mean "more"
- ~ Easy to pick—clean stalls quickly
- ~ Less Waste (low consumption, environmental)
- ~ Savings up to 50% compared to other bedding products
- ~ Benefits of high heat drying and our exclusive process
- ~ Superior absorption to control ammonia
- ~ Nationwide and International availability and distribution
- ~ Who uses Guardian Bedding—The Pro's Choice

Choose from:

- ~ Premium Flake
- ~ Small Flake
- ~ Swift Pick™
- ~ Pine Pellets

For more information

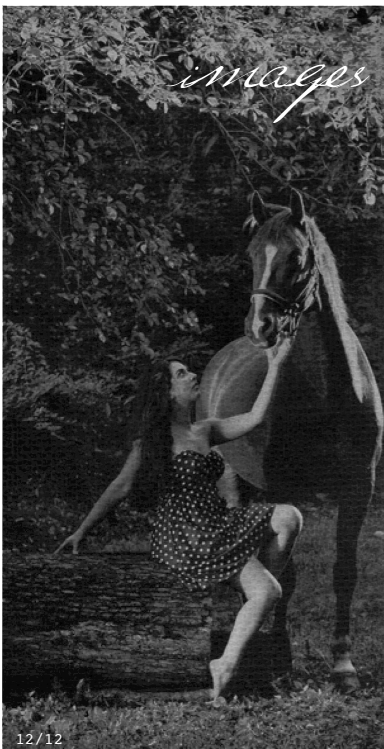
guardianhorsebedding.com ~ 866-962-4686

12/12

images beyond imagination



equines, pets, & people



There is something about the presence of a horse that speaks of the ethereal. There are many everyday moments we spend with our horses that don't feel like anything larger than what they are: minutes of the day.

However, those that spend these minutes with a horse know there is a pervasive power, subtle and intangible, that transcends the mundane, and gives the horse a quality of deity, and the time spent with him a time of worship.

Celebrate those divine moments with images beyond imagination from ShortHorse Studios. Photography sessions start at \$50, and a wide variety of options are available for horses, as well as people and pets.

Please visit my website or contact me for more information.

Heather K McManamy, Photographer

2421 West Hill Dr Fitchburg, WI 53711 www.ShortHorseStudios.com 608-886-3764

12/12

MarketPlace

SCHLEESE

the female saddle specialist

Ride Pain Free. For You. For Your Horse!

Upgrade Your Seat
to First Class!



SaddlesForWomen.com

SUNFLOWER FARMS

* PRIVATE *

Full Facility Horse Care Center

19000 128th St.

Bristol, WI 53104

Phil May

Main 262-857-8555

Cell 262-620-4846

Fax 262-857-3505

reinsman@aol.com

Phil@SunflowerFarms.com

SUNFLOWER FARMS

WISCONSIN HORSE COUNCIL

Mission Statement:

To represent and to foster a unified equine industry in Wisconsin. To promote the horse through leadership, education, service and communication, and to take a proactive role in the future growth and development of the equine industry.



WHC offers:

- Midwest Horse Fair®
- Judges Seminar
- Trail Design School
- Championship Challenge
- Funding Opportunities with Scholarships, Trail Grants and Other Grants

PO Box 72, Columbus, WI 53925 920.623.0393

Visit us on Facebook info@wisconsinhorsecouncil.org

Visit our website www.wisconsinhorsecouncil.org



Equine Services



Wellness & Preventative Care

Reproduction

Artificial Insemination

Embryo Transfer

Lameness Diagnostics

Digital Radiography

Ultrasonography

Surgical, Internal Medicine

Advanced Dentistry

Nutritional Consultation

In-Hospital Care

24 Hour Emergency

• DAVID KOLB, DVM

• JENNIFER THOMPSON, DVM

• DEAN MEYER, DVM

• CORINNE WADE, DVM

• NEIL RUPPEL, DVM

• CASSIE LEITERMAN, DVM

www.lodivet.com

608-592-7755

705 N Main

Lodi, WI

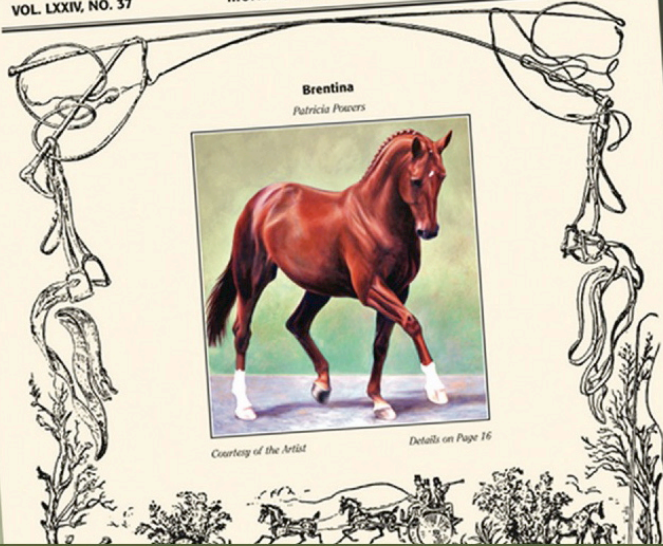
PAN AMERICAN GAMES PREVIEW—ASPCA Maclay Regionals; Kentucky National; CDS Junior/Young Rider Championships; Twin Rivers Horse Trials

THE CHRONICLE of the Horse

VOL. LXXIV, NO. 37

MONDAY, OCTOBER 10, 2011

Single Copy \$4.99



The CHRONICLE CONNECTION

WAGING THE WAR ON BREAST CANCER
HORSEWOMEN WHO
LEAD THE CHARGE

+
CUT DOWN
ON WINTER
COAT GROWTH
SAY HELLO TO
SPACE-AGE FABRICS
KYRGYZSTAN:
THE LONELIEST
RIDE ON EARTH



The CHRONICLE of the HORSE

The Authority in Sport Horse News!

Check us out at: www.chronofhorse.com



Meet Our Research Team

They don't have Ph.D.s after their names, but they're valuable partners in every aspect of Purina equine research. From palatability studies to growth and development analysis and exercise physiology, our carefully tended horses faithfully support our nutritionists and veterinarians. Thanks to Mick, Flash, PJ, Teddy and 68 other loyal equine coworkers, we develop the world's leading feeds for horses of all ages and lifestyles. At Purina Equine Research Farm, our horses make a difference for your horse.



A DIFFERENCE YOU CAN SEE™

See it at horse.purinamills.com



*Internationally talented Hanoverians
proudly bred in America.*

www.MapleRunFarmLLC.com



CYNTHIA FLEISHMAN PHOTOGRAPHY

This is your **LAST** newsletter unless you **RENEW**.
Go to WDCTA.org to download a membership form or renew online via PayPal.



SHELLEY L. DAY
Lessons Training
Will Travel

414.403.8491

www.daydressage.com
sdaydressage04@yahoo.com



Breeders helping breeders since 1999

Midwest Breeders Group

4595 Mahoney Rd. McFarland, WI 53558

midwestbreedersgroup@gmail.com

www.breedersgroup.com

608-213-8925



ANDREA SHTEN

DRESSAGE INSTRUCTION & TRAINING

BARREAU FARM LLC.

W349S10131 BITTERSWEET CT, EAGLE, WI 53119,
MAIL: PO Box 316, MUKWONAGO, WI 53149-0316
CELL: (262)470-4557 • ASHTEN@HOTMAIL.COM
WEB: WWW.ANDREASHTEN.COM



**The Training Manual
for Horse and Rider**

Dressage Today is renowned for its award-winning step-by-step training articles, developed with leading riders and trainers to give both professional and amateur riders an edge. The pages of Dressage Today will instruct, inform and inspire you issue after issue.



AIMEQUINENETWORK

EQUUS – PRACTICAL HORSEMAN
HORSE & RIDER – DRESSAGE TODAY
AMERICAN COWBOY – SPIN TO WIN – TRAIL RIDER
www.EquiSearch.com – Equine.com – MyHorseDaily.com

Subscribe today!
Toll free 1-800-877-05396
or visit www.EquiSearch.com.



Visit www.HorseBooksEtc.com for a great selection of books and dvd's from your favorite authors.

12/12

Proud Sponsor of Wisconsin Dressage & Combined Training Association

Fjord

Norwegian
*Bred, raised & trained
with performance in mind.*



GVF Sjololade
ridden by
Samantha Poirier



Please contact us for a current sales list.

Howard & Sophie Fiedler
Galena, IL

815.777.6008

www.greenvalleyfarm.com
sophie@greenvalleyfarm.com

10/12

Horses For Sale

Accolade HF— 3yo Oldenburg Verband gelding by Abke—Coriander. Bred to jump but he's an incredible mover for dressage. Quiet, sweet boy, very easy to handle. Ready to start this spring. Should mature 17—17.2H. \$17,500!



Lorelei—3yo RPSI mare by Redwine (Rotspon - Matcho AA). She was the Champion filly and the highest scoring foal of her inspection. Very sweet, very easy to handle. Lovely dressage or hunter prospect. Mature 16-16.2H \$17,000



Savannah HF—Beautiful pinto mare by Sempatico. Gorgeous mover with three very good gaits, beautiful color. Schooling Training Level, soft and easy, trailers, cross ties, clips, bathes. Get noticed in the show ring with her movement and color! \$20,000



Stephanie Severn, Hopeful Farm Sport Horses
McFarland Wisconsin
608.213.8925 · www.hopefulfarm.com
info@hopefulfarm.com



Megan McIsaac
President

LINDINHOF EQUINE SPORTS
Zentrum

DRESSAGE TRAINING • SALES • LESSONS
All Levels - F.E.I.

4246 Schneider Dr. • Oregon, WI 53575
(608) 445-8531
lindinhof1@aol.com
www.lindinhof.com
www.nodoubtmcisaac.com

Classifieds

Christmas presents! Two saddles: **Stubben Scandica dressage** saddle, 17.5", black, good condition, \$1,195. **Crosby All-Purpose**, 17.5", brown, good condition, \$550. Contact Caryn Vesperman at (608) 455-2208 or email: touchstonefarm@gmail.com.

FOR INFO ON CLASSIFIED AND DISPLAY ADS -- AT A VERY REASONABLE PRICE, GO TO WDCTA.ORG AND SEARCH UNDER "BUY/SELL" OR "FORMS."

MIDWEST ENGLISH TACK



Equestrian products, supplies, and apparel for the discriminating English Rider

Pikeur - FITS - Herm Sprenger - Gersemi - Stubben - Passier - Horseware - Kentucky - Fleck - Irideon - Rectiligne - Cavallo - Red Barn - Walhausen - Kerrits - Amerigo - Eurofit - Mattes - Thinline - Charles Owen - Equilibrium

HWY 59 & 83
W309S4837 COMMERCIAL Dr.
GENESEE DEPOT, WI 53127
Phone: (262) 968-9088



www.midwestenglishtack.com

*Visit us at our store or
stop by when you see us at shows!*

TRAINING AND BOARDING IN LAKE GENEVA

Just the place for you and your horse.

Amenities include:

- 🍷 72x180 indoor arena-excellent footing
- 🍷 80 X 200 outdoor arena
- 🍷 Stalls (10X12, 12X18, 12X24), starting at \$425
- 🍷 Custom feeding
- 🍷 Private turnouts
- 🍷 Indoor and outdoor wash racks
- 🍷 Automatic fly spraying system
- 🍷 Automatic watering system

Plus, training and lessons with....**Shelly Day**
*USDF Bronze and Silver Medal and
USDF Bronze and Silver Freestyle Bar*

For more information, contact:

Theresa Milbocker at (262) 215-3764
Immanuel PRE Champions
www.immanuelprechampions.com

Golden Oak Leaf Farm For Sale

Searching for a special place to call home?

One with:

- Every custom feature you've dreamed of,
- An equestrian facility to allow you to reach your riding goals,
- A workshop to explore your creative passions,
- Enough land for hunting or just peacefully gathering your thoughts with nature?

Then this is the place! This home is expertly situated on a gorgeous 80-acre piece of paradise with private protected views of the hills of west central Wisconsin, 2-1/2 miles southeast of Tomah ("Where the I Divides").

Built in 2003, the 3-bedroom, 2-1/2 bath, 3,900 sq. ft., single story home has a fully finished walk-out lower level. The

kitchen – the centerpiece – features custom master-craftsman solid cherry and maple cabinets with natural granite countertops. The **living room** has a cathedral ceiling, wood-burning stone fireplace and million-dollar southern exposed view. The **den** has 12' high ceiling, cherry-

and-glass doors and solid Brazilian cherrywood flooring. The **master suite** has an unbelievable view, tray ceiling with a walnut-and-leather ceiling



fan. The **master bath** includes custom-molded whirl-pool tub, his and hers vanities, walk-in closet and European-style tile shower. The

office will set your direction for the day with its wood inlaid compass in the solid maple flooring.

What you don't see is just as special. The heating and cooling system is the ultimate of "green": a water source heat pump. The lower level floor and

master bath tile have in-floor hot water heating provided by an off-peak electric boiler for ultimate comfort at the lowest operating cost. The foundation walls have 2" of rigid insulation inside and out to keep all the heat in.

The **workshop** is 48' x 60' with a concrete floor under the entire building. The south half is finished, insulated and heated for a professional woodworking shop. The other half has an 8' x 10' overhead door to store all of your toys and equipment inside.

The **equestrian center** has a 72' x 144' indoor riding arena with a dressage base, seven stalls and heated lounge with a toilet in the 36' x 54' stable. The paddocks are fenced to allow two pastures to use one automatic waterer. In addition, 31 acres are planted in share-crop hay, which provides enough hay to keep up to 15 horses year-round. Currently Golden Oak Leaf has several boarders.

www.goldenoakleaf.com

Offered for sale by owners at \$758,000. Owners are in the real estate business and welcome creative proposals.

For your private showing or more information, contact Brad at bradkortbein@gmail.com or Jessica at americ@centurytel.net.

2/12

WDCTA
Business
Members

Support your WDCTA
business members.
Buy local!

Custom Saddlery

Day Dressage
Shelly Day

Excalibur Insurance
Tom Mikulice

Hickory Grove Farm
Andrea Schten

Lindinhof Equine Sports Zentrum
Megan McIsaac

Lodi Veterinary Hospital

Midwest English Tack
Kim Amini

OTS Sunrise Farm
Wilma Prins

Pen Bryn Farm, LLC
Valerie Ahl

Silverwood Farm
Lisa Froehlig

SmartPak

Stonegate Equestrian Center
Hazelhurts, WI

Sunflower Farms
Bristol, WI

Stable - Instructor - Breeder - Business Listings

Listings provided as a service and are not an endorsement of any member or facility listed. Must be a WDCTA member to be included.

Stable Listings

BITTERSWEET FARM LL

Jennifer Kraemer
344 Ct. Rd. FF
Picket, WI 54964
920-589-2709

bittersweetfarm@ntd.net

Clean, well-lite, ventilated 12 x 12' stalls w/mats. hot/cold water, heated tack room, lounge, 70 x 140' indoor w/ mirrors, excellent footing, jumps, small XC field and 20 x 60 m grass outdoor.

BLUE RIBBON BOARDING, LLC

Penny Oneson-DoBas
W3842 Sunset Road
Plymouth, WI 53073
920-207-7077

izhe01@gmail.com

70x200 indoor arena. 12x12 matted stalls. Exceptional care and feeding program. Daily turnout in appropriate herd group or individual paddock. Lessons available.

DUNDEE TRAINING STABLE

Tracy Dikkers
N6482 Silver Road
Monticello WI 53570
608-938-2410

dundee@tds.net

Small private facility, indoor and outdoor. Lessons available.

EQUESTRIAN ENDEAVORS

Erinn Bieber
N4845 Highline Road
Bonduel, WI 54107
715-460-0532

erchelstrom@gmail.com

60 x 200' indoor with mirrors, standard outdoor dressage ring, large pasture turnout or small paddock (individual or small group), wash stall w/ hot and cold water, dressage and jumping instructors at facility and hosts dressage and jumping clinics.

GOLDEN OAK LEAF DRESSAGE

Jessica Kortbeing
27459 Holland Avenue
Tomah, WI 54660
608-387-0293

americ@centurytel.net

GOLDEN HORSESHOE FARM

Angela Rabe
N4609 Hwy. 59
Monroe, WI 53566
414-617-6022

jedinight55@yahoo.com

75 x 175' sand outdoor arena, large round pen, large pastures, individual turnout. Lessons, school horses available. Will travel.

GRAND PRIX FARM

Jackie Luebke-Puetz
15034 Hwy. X
Kiel, WI 53042
920-693-3367

cvestor@aol.com

66 x 150' indoor arena w/ mirrors, viewing lounge, h/c wash rack, matted stalls, cleaned daily, 4X/day feedings, screened facility -- no bugs, heated bathroom, hunt course, outside dressage ring, lesson horse available.

HEARTHSTONE FARM INC

Jayne Ayers
W381 S5225 Hwy. ZC
Dousman WI 53118
262-965-2066

www.dressagehorse.com

60 acres, daily turn-out, heated indoor arena, trails on property, retiree board available.

HERITAGE STABLE

Jennifer Strauss
812 N. Griffith Road
Oconomowoc, WI 53066
262-313-892

www.jlssportshorses.com

heritagestable812@msn.com

60 x 120' mirrored indoor w/ new sand/future track footing, new standard-size outdoor arena, 8+ hours of turnout daily -- weather permitting, heated lounge, miles of trails, xc course -- 2' preliminary high fences, river/creek for water therapy and conditioning, dressage/jumping lessons available.

HICKORY KNOLL FARM

Betsy Freiburger
5438 Hwy. M
Fitchburg, WI 53575
608-835-7473

frei@chorus.net

Indoor and outdoor arena, turnout, heated lounge, wash stall, trails and lessons.

HOPEFUL FARM SPORT HORSES

Stephanie Severn
4595 Mahoney Road
McFarland, WI 53558
608-213-8925

hopefulfarm@gmail.com

Small, private facility on 41 acres, 12 x 14' matted stalls, 80 x 175' outdoor arena w/ solid footing and Triple Crown 3-rail fencing. Daily turnout in appropriate herd group. Over a mile of excellent trails surrounding the pastures. Buckeye feed available.

LINDINHOFF EQUINE SPORTS ZENTRUM

Megan McIsaac
4246 Schneider Drive
Oregon, WI 53575
608-445-8531

Lindinhof1@aol.com

Indoor with mirrors and 80 x 200 sand outdoor. Individual and group turnout. Wash stall. Num-erous trails. Solarium. Lessons and monthly training available.

PARADIGM FARM

Shelly Reichart
N5834 Co. Rd. S
Lake Mills, WI 53551
414-881-1830

paradigmfarmllc@aol.com

Very private, 12-stall facility with beautiful, heated 60 x 180' indoor arena, 75 x 210' outdoor arena, daily private or group turnout, indoor and outdoor wash racks. Heated stable area, tack rooms, full bathroom and lounge. Training and lessons available from Shelly Reichart.

PEN BRYN FARM, LLC

Valerie Ahl
4321 State Road 138
Oregon, WI 53575
608-698-7924

val@sporthorseprospects.com

Full-service facility, individualized care. 76' x 126' indoor arena w/ mirrors, a 100' x 200' outdoor arena w/ dressage arena, trails, jumps, cross-country obstacles.

PRATT STABLE

Paula Pratt
8434 Central Sands Road
Bancroft, WI 54921
715-335-4130

prattfarm@hotmail.com

Boarding, lesson, breeding, training facility. 70 x 140' indoor w/ rubber footing, mirrors. Three full outdoor arenas, two round pens, jumps, trails. Heated tack rooms, lounge and wash rack. Matted stalls, daily turnout, cleaning. Dressage clinics, lessons and lesson horses.

SENTINEL FARM

Anne Zaharias
W4769 Million Dollar Road
Menominee, WI 49858
906-864-2790

sentinelfarm@mari.net

70 x 150 indoor, 100 x 200 outdoor. D-level XC course, 12 x 12' matted stalls, heated lounge, hot water wash rack, private paddocks or group pasture turnout.

SILVERWOOD FARM

Lisa Froehlig
P.O. Box 192
Camp Lake, WI 53109
262-889-4700

promopony@aol.com

Heated barn, 7 outdoor arenas, 80 x 160' mirrored indoor arena, wash stalls, large wood-fenced pastures, rehab turnouts, 100 acres with XC courses, four FEI trainers.

SUNFLOWER FARM

19000 - 128th Street
Bristol, WI 53104
262-857-8555

reinsman@aol.com

7 heated barns, 3 indoor heated arenas, 3 outdoor dressage rings, 24-hr. security, 170 acres.

WALKABOUT FARM

Alice Antczak
N7258 County Road ES
Elkhorn, WI 53121
262-642-4178

aantczak@centurytel.net

10 x 10' matted stalls, 60 x 120' mirrored indoor arena, full-size outdoor arena, seasonal pasture, manicured trails, retirement boarding, training available.

Continued on next page

Instructor Listings

JAYNE AYERS

Hearthstone Farm Inc.
W381 S5225 Hwy. ZC
Dousman, WI 53118
262-965-2066
www.dressagehorse.com
 Have produced many horses and riders who are national award winners. Specialize in teaching rider seat and aids, as well as using FEI judging skills to coach for competitions. Ridden thru G.P.; many USDF Horse of the Year awards, long-listed U.S. equestrian team. 40 years teaching experience, beginner thru G.P. Will travel. School horses available.

ERINN BIEBER

Equestrian Endeavors
N4845 Highline Road
Bonduel, WI 54107
715-460-0532
erchelstrom@gmail.com
 Shown and trained through I-1 and earned USDF Bronze and Silver medals. Will teach all levels. School horses available. Will travel for lessons and available for clinics. Will trailer and travel to shows.

SHELLEY DAY

1324 S. 124th
West Allis, WI 53214
414-403-8491
sdaydressage04@yahoo.com
 USDF Bronze & Silver Medalist; USDF award winner; completed through I1 on self-trained horse. Have 25 years teaching & training experience. Will travel in WI & IL. School horses available. Reference available upon request.

KIMBERLY DEATON-IWEN

Wisconsin Equestrian Center
2486 Old Martin Rd.
DePere, WI 54115
920-737-4936
giwen@new.rr.com
 Training, instruction, clinics offered. USDF Gold, Silver, Bronze medalist. Several national awards including USDF Horse of the Year on self-trained horses. USET developing list. Enjoy working with all breeds, ages and levels of riders. Have trained with many European trainers over past 30 years. Trailer-in lessons available.

TRACEY DIKKERS

Dundee Training Stable
N6482 Silver Road
Monticello, WI 53570
608-938-2410
dundee@tds.net
 USDF Bronze and Silver Medalist. "L" graduate w/ distinction. Trained and shown through PSG. Will travel in Madison area.

LISA FROEHLIG

Silverwood Farm
P.O. Box 192
Camp Lake, WI 53109
262-889-4700
promopony@aol.com
 20 years teaching experience, will teach Intro thru G.P. 30 years riding experience – USDF Bronze, Silver and Gold Medals. Will do some travel.

AMANDA JOHNSON

6680 W. River Pointe Drive
Franklin, WI 53132
319-331-3241
ajohnsonborchardt@gmail.com
 15 years training experience; USDF Bronze, Silver, Gold medals; multiple USDF year-end awards, won CDI competitions, coached students to their USDF Bronze and Silver medals. Will teach beginner thru Grand Prix. Trained and shown Training level to Grand Prix, plus FEI Young Horse. Will travel.

TRACY KISSEL

Serenity Farm
2803 Old Park Road
Sheboygan, WI 53081
920-918-3685
920-457-5353
 USDF Bronze medalist. 30+ years teaching experience from Training through PSG. Shown through 4th. Continue training w/ many European trainers. Year-end awards with USDF, WDCTA, AQHA. Associates Degree in Equine Management. Travel for clinics. References available.

BITTERSWEET FARM LLC

344 Ct. Rd. FF
Picket, WI 54964
920-589-2709
bittersweetfarm@ntd.net
 Classical dressage (Training thru 3rd), basic ground work. Experienced through 3rd level, USDF qualified rider, Perofmrnce Horse awards, judge 4-H shows, invovled with USPC, does clinics and will travel.

JACKIE LUEBKE-PUETZ

Grand Prix Farm
15034 Hwy. X
Kiel, WI 53042
920-693-3367
cvestor@aol.com
 Ridden for 25+ years, trained with 4 Olympic riders, attend USDF convention, won WDCTA awards and Region 2 schooling awards, as have students. USDF Adult Program Region 2 chair.

MEGAN MC ISAAC

Lindinhof Equine Sports Zentrum
4246 Schneider Drive
Oregon, WI 53575
608-445-8531
Lindinhof1@aol.com
 FEI trainer. USDF Gold, Silver and Bronze medals and Freestyle Gold Bar. Competed successfully at Dressage at Devon in 2007. Multiple year-end award winner. Coached students to year-end awards, regional championships and their USDF medals. Will travel to give clinics. 10 years teaching experience, beginners thru GP. Grand Prix school horses available.

PEN BRYN FARM, LLC

4321 State Road 138
Oregon, WI 53575
608-698-7924
val@sporthorseprospects.com
 Several on-site instructors willing to work with all ages, toddlers through 4th level dressage. School horses available. Instructors will do some travel and have references.

SHELLY REICHAUT

Paradigm Farm
N5834 Co. Rd. S
Lake Mills, WI 53551
414-881-1830
paradigmfarmllc@aol.com
 15 years of teaching experience, trained and shown through Grand Prix. USDF Gold, Silver and Bronze Medalist -- all earned on self-trained horses. Based out of Paradigm Farm, but will also travel for lessons/clinics.

ANDREA SCHTEN

Hickory Grove Farm
W336 S8510 County Road E
Mukwonago, WI 53149
262-470-4557
aschten@hotmail.com
 USDF Bronze and Silver Medalist. Regional championships - Training thru I-1 on self-trained horses. Accepting approved horses in training. Specialize in assisting amateurs move up the levels.

NICOLE TRAPP

1207 White Sands Court
West Bend, WI 53090
920-960-6930
trappnl@hotmail.com
 Competed thru 2nd Level, trained thru 4th. Evented thru Training. 15+ years teaching experience. Audited USDF Instructor Certification program. Passed USDF "L" Judge program w/ distinction. USDF regional/HOY breed awards. Lesson/ training programs to fit any budget. Will travel. School horses. Will start young horses.
KATE VAN SICKLEN
Silver Spring Farm
3031 Timber Lane
Verona, WI 53593
608-845-6630
katevsh@tds.net
 British Horse Society Instructor. USDF "L" Program graduate with distinction. USDF Associate Instructor. USDF medalist, shown thru Prix St. George. 30+ years teaching experience. Will teach thru 4th Level. Specialize in teaching all riders and horses the correct basics. Will travel for lessons.

JOANN WILLIAMS

Cambridge Farm
W3580 Scotch Bush Rd
Eikhorn, WI 53121
414-378-2231
jwcambridge18@yahoo.com
 Offering classical dressage for every horse and rider. USDF Gold medallist on self-trained horse. Many students have Silver and Bronze. Multiple USDF regional winner. Travels for lessons/clinics.

ANNE ZAHARIAS

Sentinel Farm
W4769 Million Dollar Rd
Menominee, MI 49858
906-864-2790
sentinfarm@mari.net
 USDF Bronze Medallist. Completed USDF Instructor Certification courses. USDF and Breed Championship titles at Regional, National and World levels. Experience with a variety of breeds. Will travel off site.

Continued on next page

Breeder Listings

VALERIE AHL
Pen Bryn Farm, LLC
 4321 State Road 138
 Oregon, WI 53575
 608-698-7924
val@sporthorseprospects.com
 Specializing in breeding world-class bloodlines including Lingham, Rotspan, Londonderry, Weltmeyer and Winterprinz.

TRACEY DIKKERS
Dundee Training Stable
 N6482 Silver Road
 Monticello, WI 53570
 (608) 938-2410
dundee@tds.net
 Warmblood/warmblood crosses, young stock usually available.

SHANNON E. LANGER
Maple Run Farm LLC
 W3465 Market Road
 Helenville, WI 53137
 (920) 674-6344
maplerunfarm@yahoo.com
 Hanoverians of exceptional quality. Bloodlines include Ampere, Bordeaux, DeNiro, Diamond Hit, Rohdiamont, Royal Prince, Sir Donnerhall, Sinatra Song, Fidertanz, Pablo, Winterprinz and Weltmeyer.

JACKIE LUEBKE-PUETZ
Grand Prix Farm
 15034 Hwy. X
 Kiel, WI 53042
 920-693-3367
cvestor@aol.com
 Too Cute To Shoot, Welsh Section B, multiple breed championships, WI State Horse Council Championships winner, bay, Farley bloodlines.

STEPHANIE SEVERN
HOPEFUL FARM SPORT HORSES
 4595 Mahoney Road
 McFarland, WI 53558
 (608) 213-8925
hopefulfarm@gmail.com
 Breeders of quality German Oldenburg, Westfalen, RPSI and Dutch Warmblood sport horses since 1993. Horses for sale.

Business Listings

RETAIL BUSINESSES

A HORSE-A-PEACE LLC
Cathy Gianere
 S36W226580 Genesee Road
 Waukesha, WI 53189
ahorse-apeace.llc@wi.rr.com
 Sport massage therapist, cranio-sacral therapist, Reiki master. See clients at their location from Racine to Madison area, daytime or occasional weekend.

COMPETITIVE EDGE BODYWORK
Nicki Butler
 9 Wakeman Street
 Madison, WI 53705
 608-358-2589
findawayfarm@yahoo.com
 Competitive Edge equine body work: massage, Reiki, myofascial release, ESMT certified -- Keys to mutually enjoyable riding sessions with your relaxed, supple, symmetrically moving horse. 30 years experience with all breeds and levels.

EXCALIBUR INSURANCE AGENCY
 800-617-2450
info@excaliburinsurance.com
 Equine insurance - mortality insurance, farm owners insurance, instructors and trainers liability insurance.

PLUM LAKE VACATION HOME RENTALS
Debra Stephenson
 8177 Plum Lake Station Road
 Sayner, WI 54560-9751
 715-542-3742
plumlakedressage@gmail.com
 Year-round vacation home rentals on Plum Lake. Bring your horse on vacation. Heated indoor arena, lounge and viewing area; wash stall; outdoor arena and round pen.

SHORTHORSE STUDIOS
Heather K. McManamy
 2421 West Hill Drive
 Fitchburg, WI 53711
 608-886-3764
heather@shorthorsestudios.com
 ShortHorse Studios is a photography company providing images beyond imagination of equines, pets and people. For more info, please visit www.shorthorsestudios.com.

SPORT HORSE MARKETPLACE
Anna Goebel
 4826 South Hill Drive
 Madison, WI 53705
 608-232-2922
 608-232-2922
sporthorsemarketplace.com
 Quarterly sport horse magazine specializing in sport horses and ponies for sale, stallion and breeder services, and all goods and services for sport horse enthusiasts, and The Sporthorse Directory: annual stallion directory.

CARYN VESPERMAN - L JUDGE
 W1619 King Road
 Brooklyn, WI 53521
 608-455-2208
touchstonefarm@gmail.com
 L judge, passed with distinction. Available for schooling shows.

TRAINING, STABLES & SHOW FACILITIES

BITTERSWEET FARM LLC
Jennifer Kraemer
 344 Ct. Rd. FF
 Picket, WI 54964
 920-589-2709
bittersweetfarm@ntd.net
www.bittersweetfarm.us
 Family-owned boarding facility available for clinics and day schooling shows.

SHELLEY DAY
 1324 S. 124th
 West Allis, WI 53214
 414-403-8491
sdaydressage04@yahoo.com
 USDF Bronze & Silver Medalist; USDF award winner; completed through I1 on self-trained horse. Have 25 years teaching & training experience. Will travel in WI & IL. School horses available.

GOLDEN HORSESHOE FARM
Angela Rabe
 N4609 Hwy. 59
 Monroe, WI 53566
 414-617-6022
jedinight55@yahoo.com
 Dressage lessons, school horses available. Training, boarding. Quality horses for sale, Friesian sport horses, clinics.

HICKORY GROVE FARM
Andrea Schten
 W336 S8510 County Road E
 Mukwonago, WI 53149
 262-470-4557
aschten@hotmail.com
 USDF Bronze and Silver Medalist. Regional championships - Training thru I-1 on self-trained horses. Accepting approved horses in training. Specialize in assisting amateurs move up the levels.

LINDINHOFF EQUINE SPORTS ZENTRUM
Megan McIsaac
 4246 Schneider Drive
 Oregon, WI 53575
 608-445-8531
Lindinhof1@aol.com
 Lessons, sales and training. Tuesday thru Sunday. Open for lessons noon to 6 p.m.

PEN BRYN FARM, LLC
Valerie Ahl
 4321 State Road 138
 Oregon, WI 53575
 608-698-7924
val@sporthorseprospects.com
 Our combined breeding and boarding full-service facility offers one-on-one attention for you and your horse.

SILVERWOOD FARM & SHOW FACILITY
Lisa Froehlig
 P.O. Box 192
 Camp Lake, WI 53109
 262-889-4700
www.silverwoodfarm.net
 Boarding, rehab, retirement, dressage training and instruction. Host to multiple USEF-USDF-recognized dressage shows. Open 7 days a week, 6 a.m. to 10 p.m. Located 45 minutes south of Milwaukee and 1 hour north of Chicago.

SUNFLOWER FARM !
19000 - 128th Street
Bristol, WI 53104
262-857-8555
reinsman@aol.com
 7 heated barns, 3 indoor heated arenas, 3 outdoor dressage rings, 24-hr. security, 170 acres.

This is the LAST month your listings will be included in the eQuester ... unless you renew. Make sure people know what you offer and how to reach you. Renew ASAP!